

LEASEHOLD
 STRATA PLAN OF LOT 12
 DISTRICT LOT 4805 GROUP 1
 NEW WESTMINSTER DISTRICT PLAN BCP3309

SHEET 1 OF 16 SHEETS

B.C.G.S. 92G.024

STRATA PLAN BCS 973 DEPOSITED AND REGISTERED
 IN THE LAND TITLE OFFICE AT NEW WESTMINSTER, B.C.
 THIS 22 DAY OF SEPT 20 04

SCALE 1:750



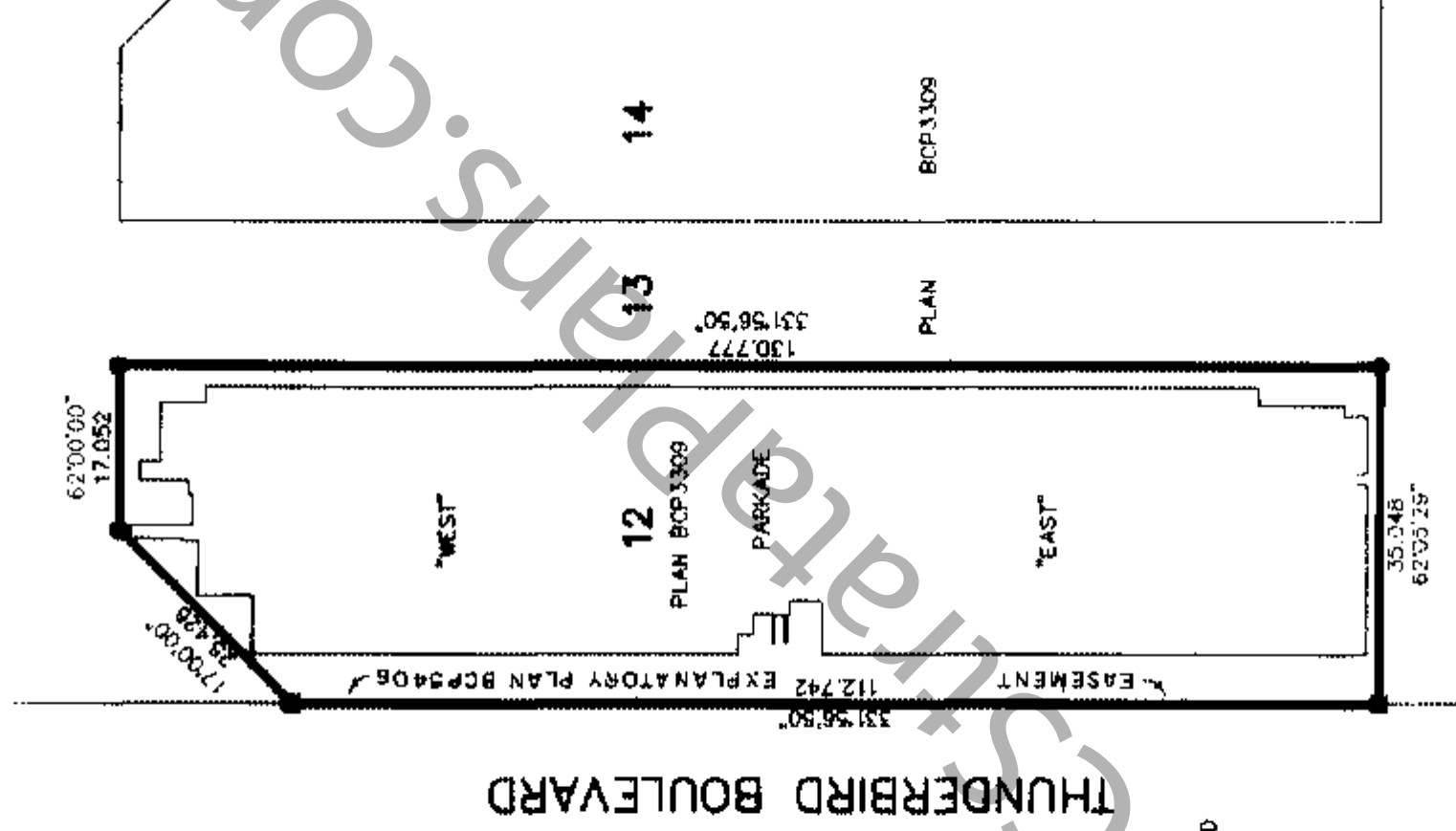
ALL DISTANCES ARE IN METRES.



B. Beggs / EP
 DEPUTY REGISTRAR

DW440310 - 389

THIS PLAN USES WITHIN THE
 GREATER VANCOUVER REGIONAL DISTRICT



NAME OF DEVELOPMENT

"JOURNEY"

CIVIC ADDRESS:
 6310 THUNDERBIRD BOULEVARD
 VANCOUVER, B.C.

THE UNIVERSITY ENDOWMENT LANDS

LEGEND:

- INDICATES STANDARD IRON POST FOUND
- INDICATES LEAD PLUG FOUND
- S.L. INDICATES STRATA LOT
- C.P. INDICATES COMMON PROPERTY
- B INDICATES BALCONY
- P INDICATES PATIO
- ELEC INDICATES ELECTRICAL CLOSET
- GAS INDICATES GAS SUPPLY CLOSET
- ELLY INDICATES ELEVATOR

GRID BEARINGS ARE DERIVED FROM PLAN BCP3309.

INTEGRATED SURVEY AREA NO. 31, CITY OF VANCOUVER.
 THIS PLAN SHOWS HORIZONTAL GROUND-LEVEL DISTANCES
 EXCEPT WHERE OTHERWISE NOTED. TO COMPUTE GRID
 DISTANCES, MULTIPLY GROUND-LEVEL DISTANCES BY
 COMBINED FACTOR 0.9995923.

BALCONIES AND PATIOS ARE LIMITED COMMON
 PROPERTY FOR USE OF THE STRATA LOTS INDICATED
 (EG: 6-21, P-2)

MATSON PECK & TOPLISS
 SURVEYORS & ENGINEERS

#210 - 8171 COOK ROAD
 RICHMOND, B.C.

V6Y 3T8

PH: 604-270-9331

FAX: 604-270-4137

CADFILE: 14000-SH1-STRATA.DWG

I, HANS J. TROELSEN, A BRITISH COLUMBIA LAND SURVEYOR, OF
 THE CITY OF RICHMOND, IN BRITISH COLUMBIA, CERTIFY THAT I
 WAS PRESENT AT AND PERSONALLY SUPERINTENDED THE SURVEY
 REPRESENTED BY THIS PLAN, AND THAT THE SURVEY AND PLAN
 ARE CORRECT. THE FIELD SURVEY WAS COMPLETED ON
 THE 30TH DAY OF AUGUST, 2004.

THE PLAN WAS COMPLETED AND CHECKED, AND THE
 CHECKLIST FILED UNDER #20275 ON
 THE 30TH DAY OF AUGUST, 2004.

(Handwritten signature and stamp)

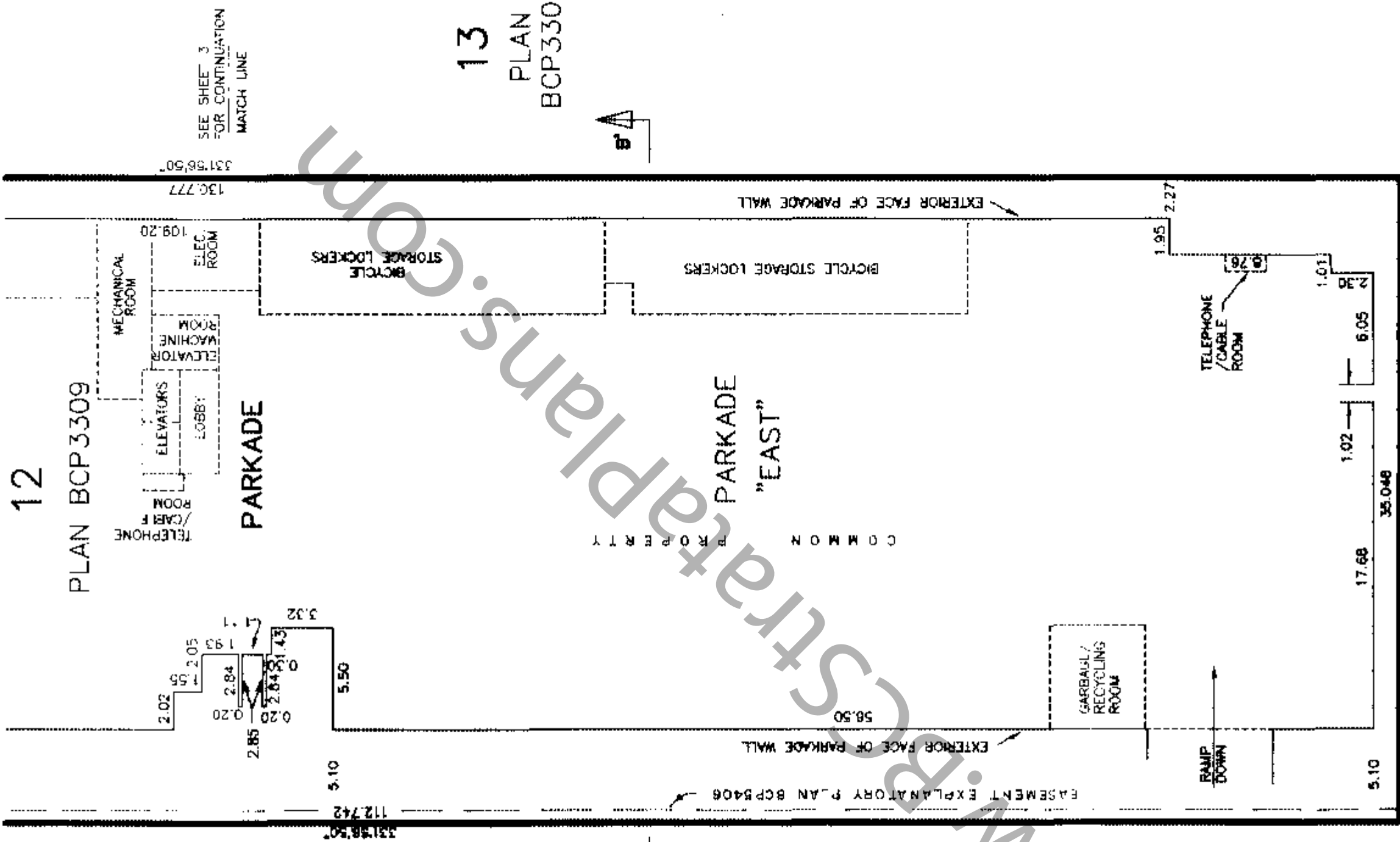
B.C.L.S.

ORIGINAL

SCALE 1:250



ALL DISTANCES ARE IN METRES.



SEE SHEET 3 FOR CONTINUATION MATCH LINE

SEE SHEET 3 FOR CONTINUATION MATCH LINE



THUNDERBIRD BOULEVARD

MATSON PECK & TOPLISS SURVEYORS & ENGINEERS

#210 - 8171 COOK ROAD RICHMOND, B.C.

V6Y 3T8

PH: 604-270-9331

FAX: 604-270-4137

CADFILE: 14000-PARKADE-STRATA.DWG

Handwritten signature and date: 8/30/06

DATE

B.C.L.S.

PARKADE — "WEST"

SHEET 3 OF 16 SHEETS

SCALE 1:250

STRATA PLAN BCS 973



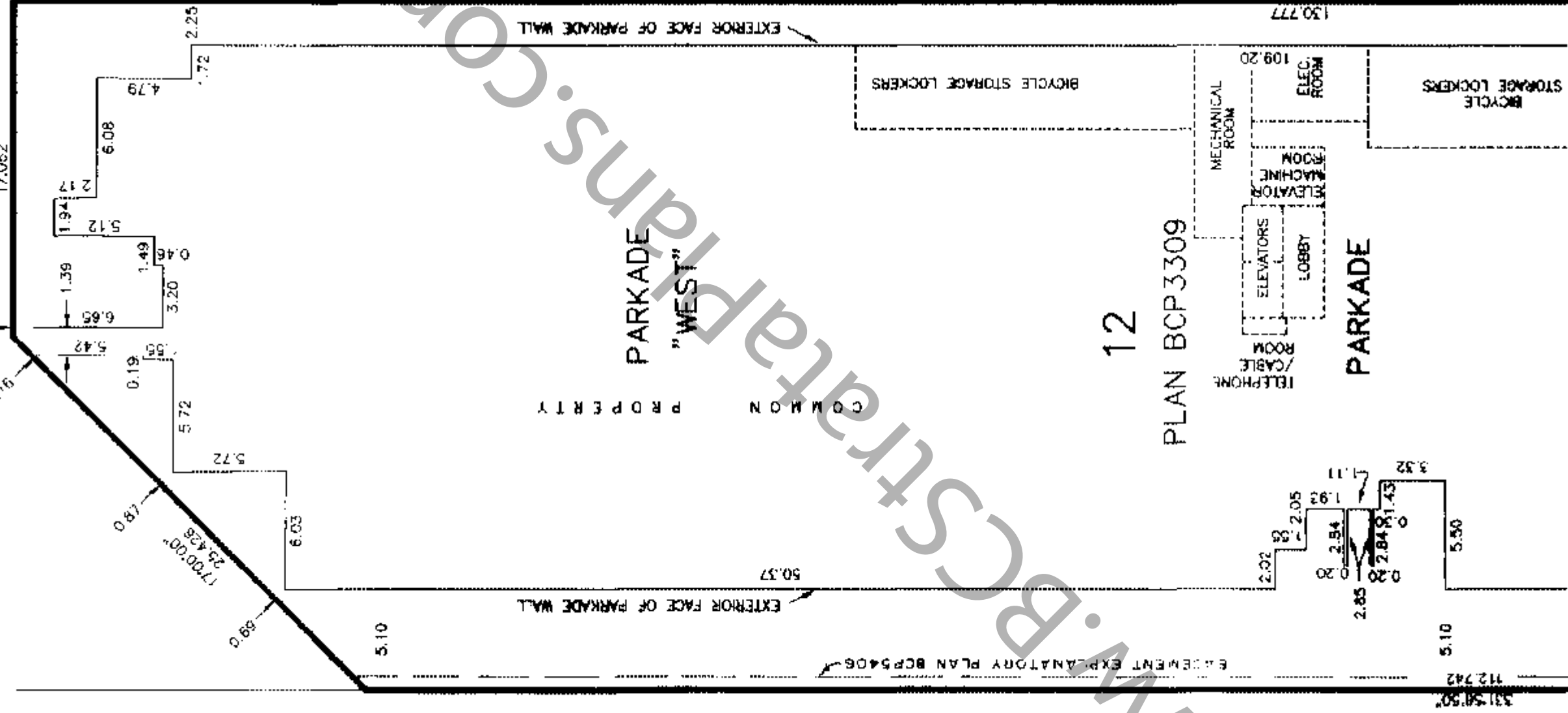
ALL DISTANCES ARE IN METRES.



THUNDERBIRD BOULEVARD

13
PLAN
BCP3309

12
PLAN BCP3309



MATCH LINE
SEE SHEET 2
FOR CONTINUATION

MATCH LINE
SEE SHEET 2
FOR CONTINUATION

MATSON PECK & TOPLISS
SURVEYORS & ENGINEERS
#210 - 8171 COOK ROAD
RICHMOND, B.C.
V6Y 3T8
PH: 604-270-9331
FAX: 604-270-4137

CADFILE: 14000-PARKADE-STRATA.DWG

DATE 8/30/04

B.C.L.S.

REGISTERED OWNER:
THE UNIVERSITY OF BRITISH COLUMBIA
(FOR UNIVERSITY PURPOSES)

[Signature]
AUTHORIZED SIGNATORY
SIGN AND PRINT NAME

[Signature]
AUTHORIZED SIGNATORY
SIGN AND PRINT NAME

[Signature]
WITNESS AS TO BOTH SIGNATURES
SIGN AND PRINT NAME

[Signature]
OCCUPATION OF WITNESS

[Signature]
ADDRESS OF WITNESS

[Signature]

MORTGAGEE:
THE BANK OF NOVA SCOTIA

[Signature]
AUTHORIZED SIGNATORY
SIGN AND PRINT NAME

[Signature]
AUTHORIZED SIGNATORY
SIGN AND PRINT NAME

[Signature]
WITNESS AS TO BOTH SIGNATURES
SIGN AND PRINT NAME

[Signature]
OCCUPATION OF WITNESS

BANKER
ADDRESS OF WITNESS

I, HANS J. TROEISEN, A BRITISH COLUMBIA LAND SURVEYOR,
CERTIFY THAT THE BUILDINGS SHOWN ON THIS STRATA PLAN ARE
WITHIN THE EXTERNAL BOUNDARIES OF THE LAND THAT IS THE
SUBJECT OF THE STRATA PLAN

DATED AT RICHMOND, B.C. *30* DAY OF *August*, 2004

[Signature]
B.C.L.S.

MATSON PECK & TOPLISS
SURVEYORS & ENGINEERS

#210 - 8171 COOK ROAD
RICHMOND, B.C.

V6Y 3T8

PH: 604-270-9331

FAX: 604-270-4137

CADFILE: 14000-SG-STRATA.DWG

STRATA PLAN BCS 973

LEASE:
JOURNEY PROJECTS LTD.
INCORPORATION NO. 672813

[Signature]
AUTHORIZED SIGNATORY
SIGN AND PRINT NAME

AUTHORIZED SIGNATORY
SIGN AND PRINT NAME

WITNESS AS TO BOTH SIGNATURES
SIGN AND PRINT NAME

[Signature] DAREEN CHUNG
OCCUPATION OF WITNESS

[Signature] Dev't Ass't

ADDRESS OF WITNESS
Suite 2200, Four Bentail Centre
1055 Dunsmuir Street
PO BOX 49214
VANCOUVER, BC V7X 1K8

MORTGAGEE:
UBC PROPERTIES INVESTMENTS LTD.
INCORPORATION NO. 578584

[Signature]
AUTHORIZED SIGNATORY
SIGN AND PRINT NAME

[Signature]
AUTHORIZED SIGNATORY
SIGN AND PRINT NAME

[Signature]
WITNESS AS TO BOTH SIGNATURES
SIGN AND PRINT NAME

[Signature]
OCCUPATION OF WITNESS

2336 WEST MARLE V6T 1Z4
ADDRESS OF WITNESS UAN.

I, HANS J. TROEISEN, A BRITISH COLUMBIA LAND SURVEYOR,
CERTIFY THAT THE BUILDINGS INCLUDED IN THIS STRATA PLAN HAVE NOT,
AS OF 30/04 BEEN PREVIOUSLY OCCUPIED.

[Signature]
B.C.L.S.

[Signature]
DATE 8/30/04 B.C.L.S.

SCALE 1:200

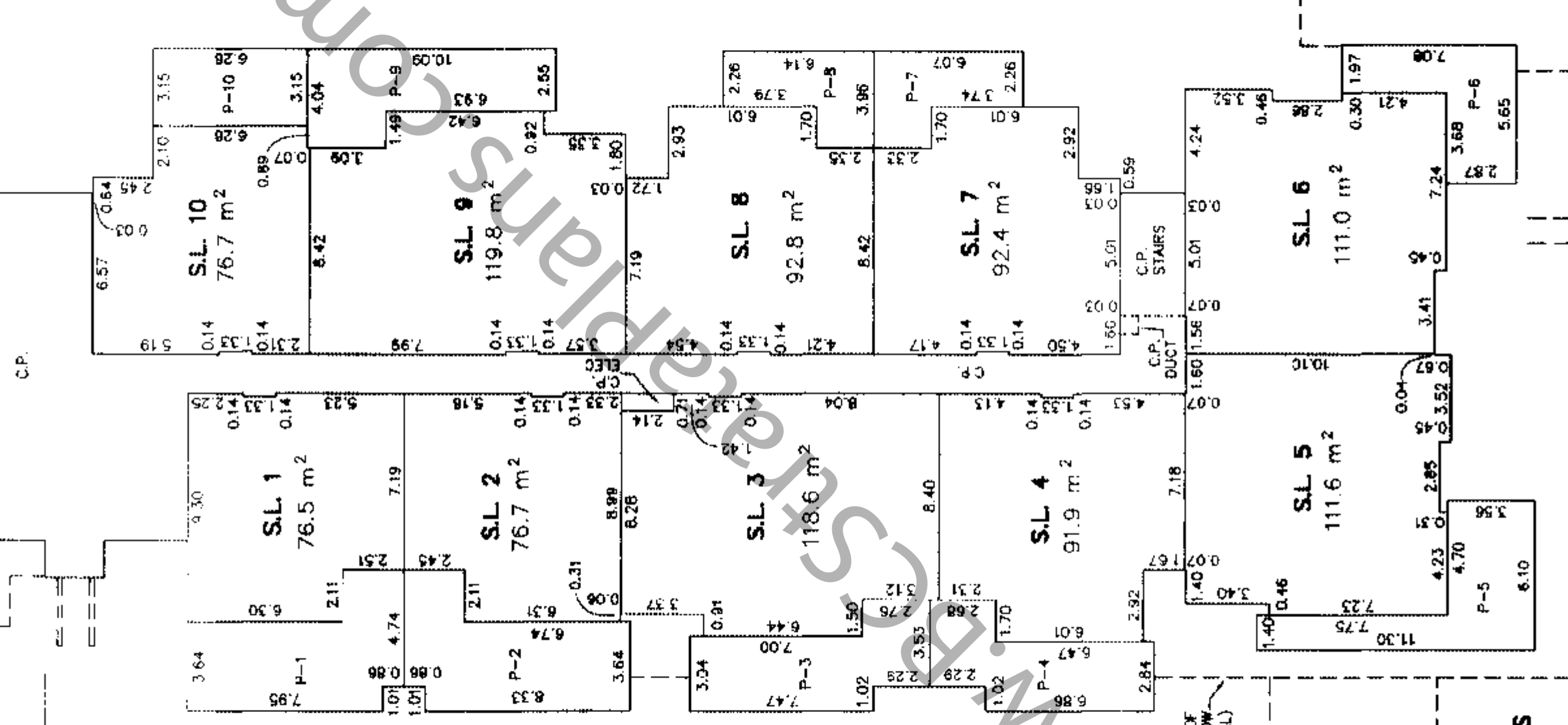
STRATA PLAN BCS 773



ALL DISTANCES ARE IN METRES.

SEE SHEET 6 FOR CONTINUATION MATCH LINE

C.P.



SEE SHEET 6 FOR CONTINUATION MATCH LINE



PERIMETER OF FLOOR BELOW (TYPICAL)

MATSON PECK & TOPLISS
SURVEYORS & ENGINEERS
#210 - 8171 COOK ROAD
RICHMOND, B.C.
V6Y 3T8
PH: 604-270-9331
FAX: 604-270-4137
CADFILE: 14000-15TFL-STRATA.DWG

DATE 8/30/01

1ST FLOOR - "WEST"

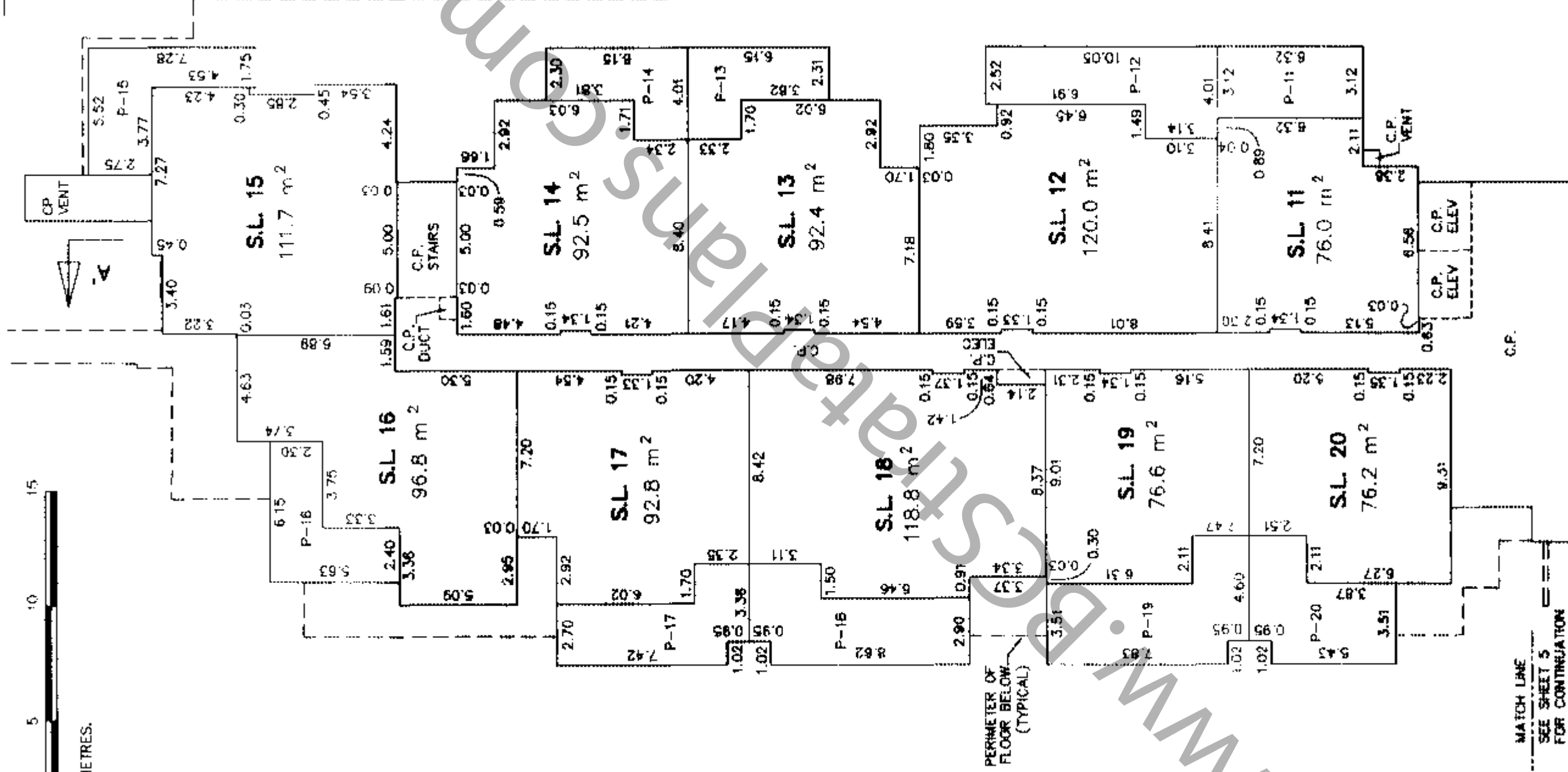
SHEET 6 OF 16 SHEETS

SCALE 1:200



ALL DISTANCES ARE IN METRES.

STRATA PLAN BCS 973



MATCH LINE
SEE SHEET 5
FOR CONTINUATION

MATCH LINE
SEE SHEET 5
FOR CONTINUATION



MATSON PECK & TOPLISS
SURVEYORS & ENGINEERS

#210 - 6171 COOK ROAD
RICHMOND, B.C.

V6Y 3T8
PH: 604-270-9331
FAX: 604-270-4137

CADFILE: 14000-1STFL-STRATA.DWG

DATE

8/20/01

.B.C.L.S.

2ND FLOOR - "EAST"

SHEET 7 OF 16 SHEETS

SCALE 1:200

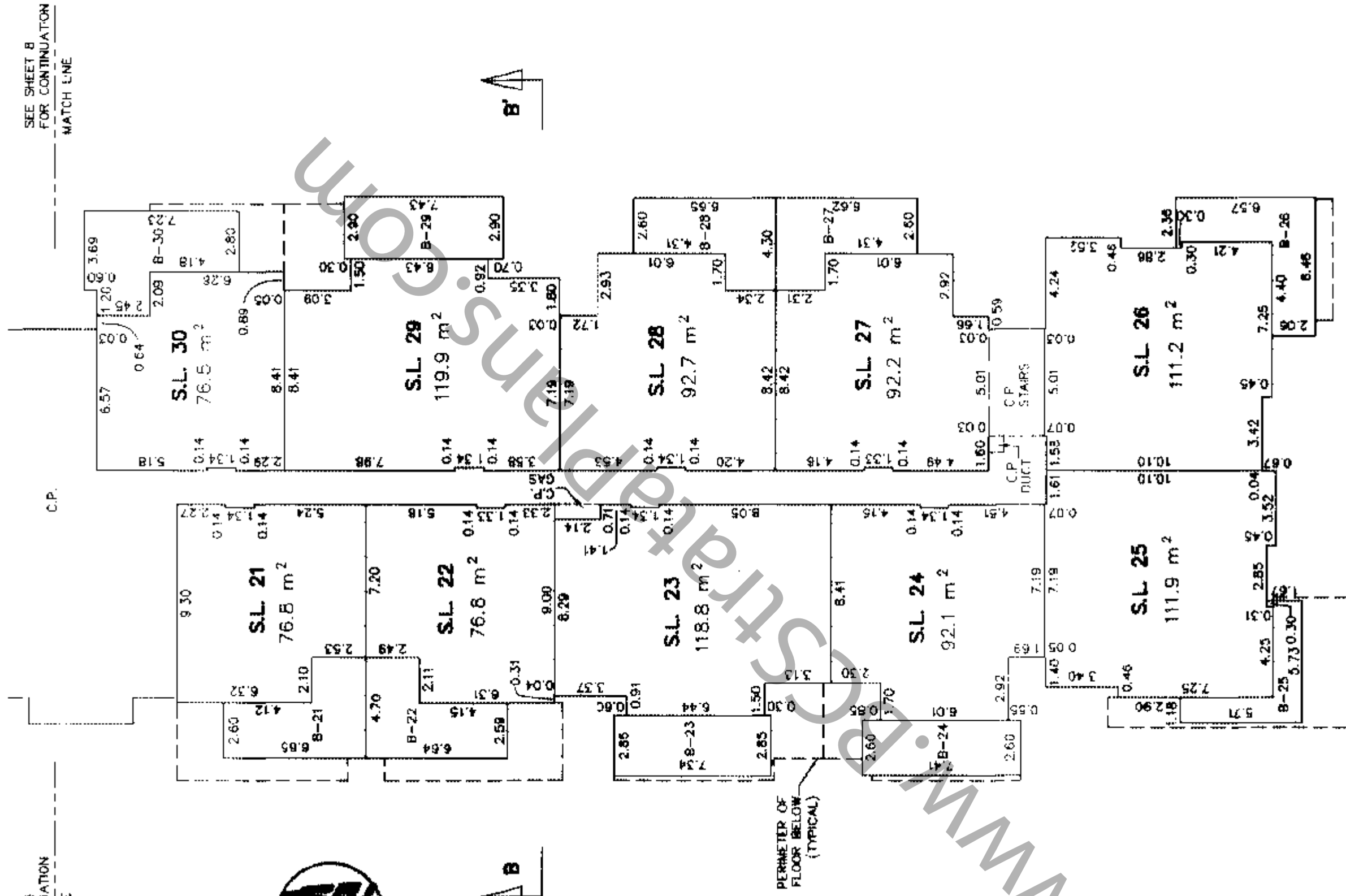
STRATA PLAN BCS 973



ALL DISTANCES ARE IN METRES.

SEE SHEET 6 FOR CONTINUATION MATCH LINE

SEE SHEET 8 FOR CONTINUATION MATCH LINE



MATSON PECK & TOPLISS SURVEYORS & ENGINEERS #210 - 8171 COOK ROAD RICHMOND, B.C. V6Y 3T8 PH: 604-270-9331 FAX: 604-270-4137 CADFILE: 14000-2#EFL-STRATA.DWG

DATE 8/30/04

B.C.L.S.

2ND FLOOR - "WEST"

SHEET 8 OF 16 SHEETS

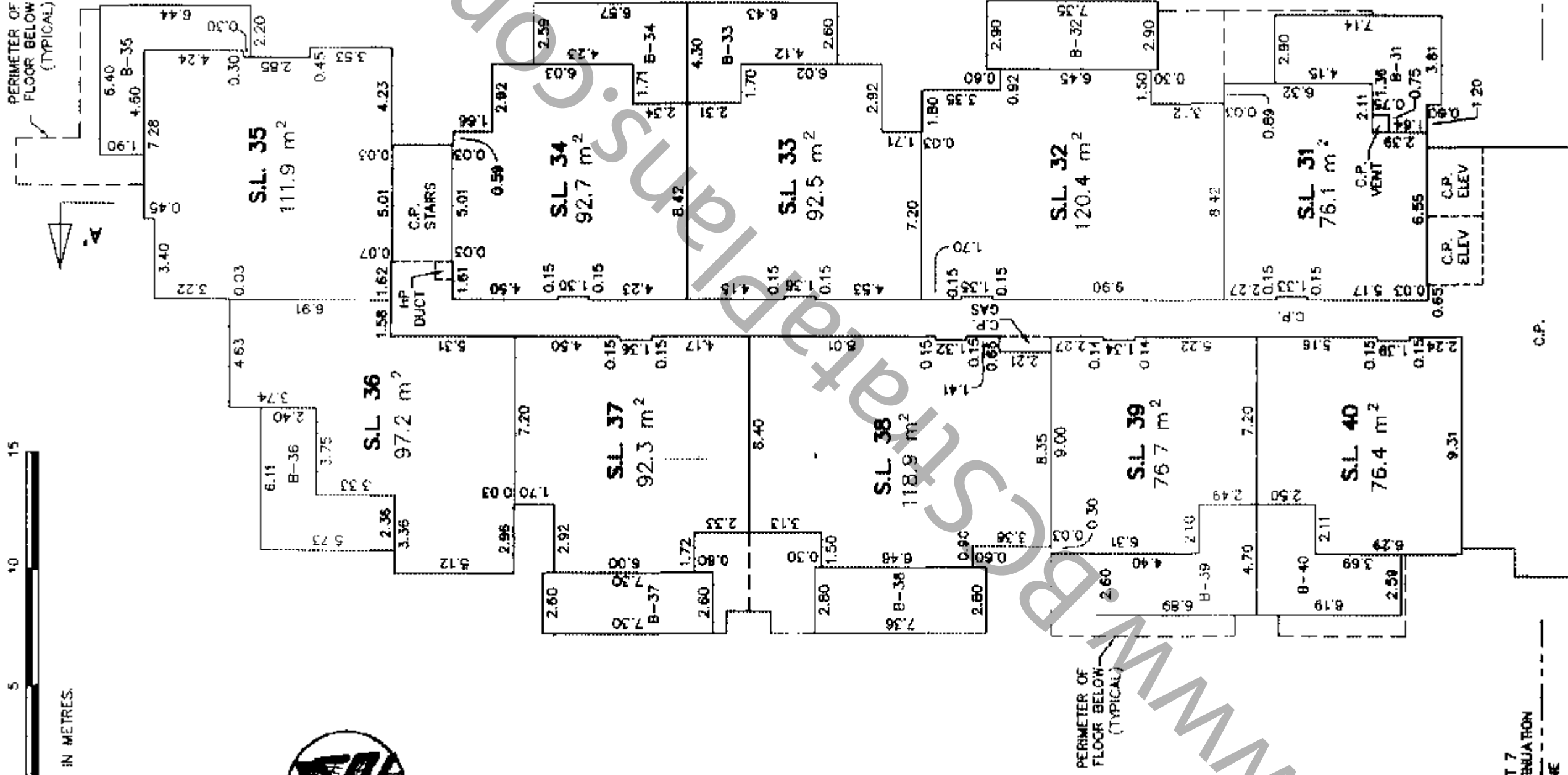
SCALE 1:200



ALL DISTANCES ARE IN METRES.



STRATA PLAN BCS 773



SEE SHEET 7 FOR CONTINUATION
MATCH LINE

MATSON PECK & TOPLISS
SURVEYORS & ENGINEERS

#210 - 8171 COOK ROAD
RICHMOND, B.C.

V6Y JTB
PH: 604-270-9331
FAX: 604-270-4137

CADFILE: 14000-2NDFL-STRATA.DWG

DATE

8/30/04

.B.C.L.S.

3RD FLOOR - "EAST"

SHEET 9 OF 16 SHEETS

SCALE 1:200

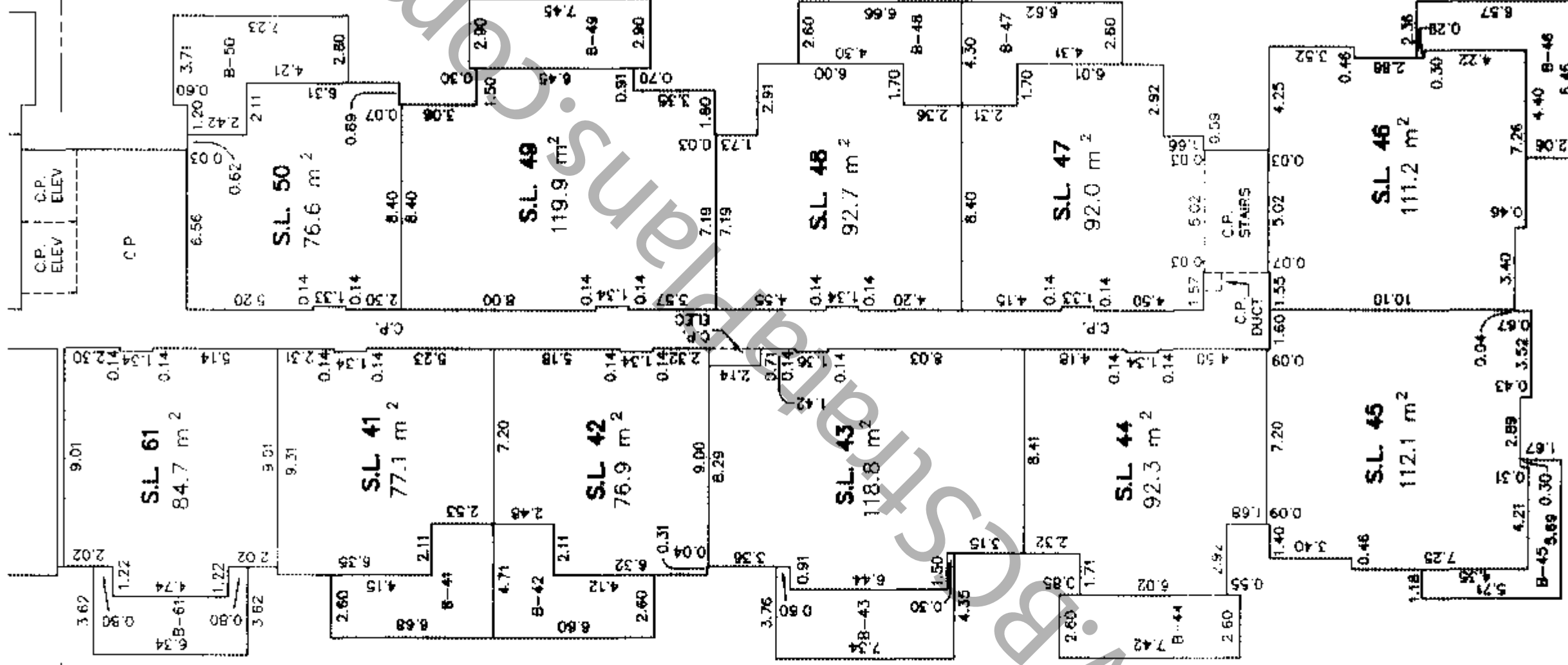
STRATA PLAN BCS 973



ALL DISTANCES ARE IN METRES.

SEE SHEET 10 FOR CONTINUATION
MATCH LINE

SEE SHEET 10 FOR CONTINUATION
MATCH LINE



MATSON PECK & TOPLISS
SURVEYORS & ENGINEERS

#210 - 8171 COOK ROAD
RICHMOND, B.C.

V6Y 3T8
PH: 604-270-9331
FAX: 604-270-4137

CADFILE: 14000-3RDFL-STRATA.DWG

DATE 8/30/04

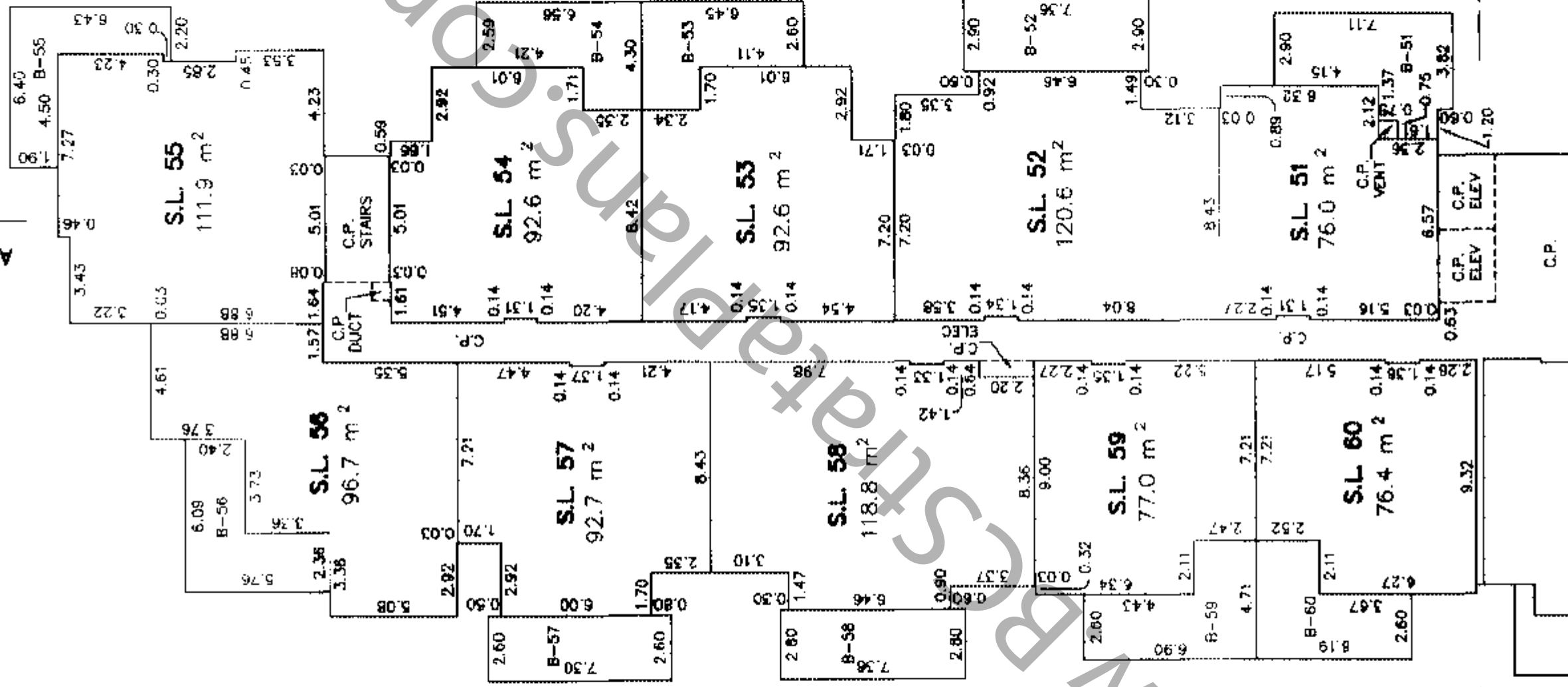
B.C.L.S.

SCALE 1:200

STRATA PLAN BCS 973



ALL DISTANCES ARE IN METRES.



MATCH LINE
SEE SHEET 9
FOR CONTINUATION

MATCH LINE
SEE SHEET 9
FOR CONTINUATION

MATSON PECK & TOPLISS
SURVEYORS & ENGINEERS
#210 - 8171 COOK ROAD
RICHMOND, B.C.
V6Y 3T8
PH: 604-270-9331
FAX: 604-270-4137
CADFILE: 14000-3RDFL-STRATA.DWG

(Signature)
DATE 8/30/04

DATE

B.C.L.S.

4TH FLOOR - "EAST"

SHEET 11 OF 16 SHEETS

SCALE 1:200

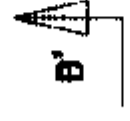
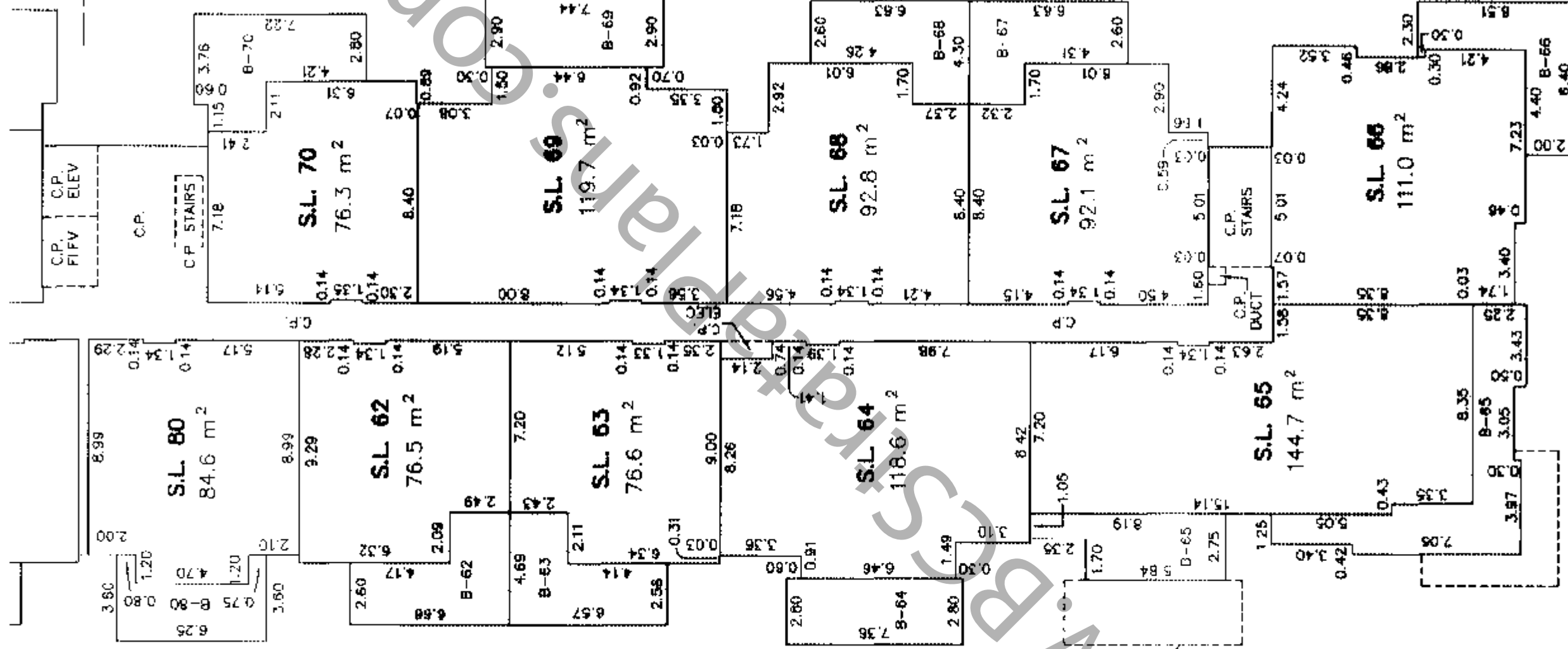
STRATA PLAN BCS 973



ALL DISTANCES ARE IN METRES.

SEE SHEET 12
FOR CONTINUATION
MATCH LINE

SEE SHEET 12
FOR CONTINUATION
MATCH LINE



MATSON PECK & TOPLISS
SURVEYORS & ENGINEERS
 #210 - 8171 COOK ROAD
 RICHMOND, B.C.
 V6Y 5T8
 PH: 604-270-9331
 FAX: 604-270-4137
 CADFILE: 14000-4THFL-STRATA.DWG

DATE 8/30/04

A signature in a circle, likely of the surveyor or engineer, with the date 8/30/04 written next to it.

B.C.L.S.

4TH FLOOR - "WEST"

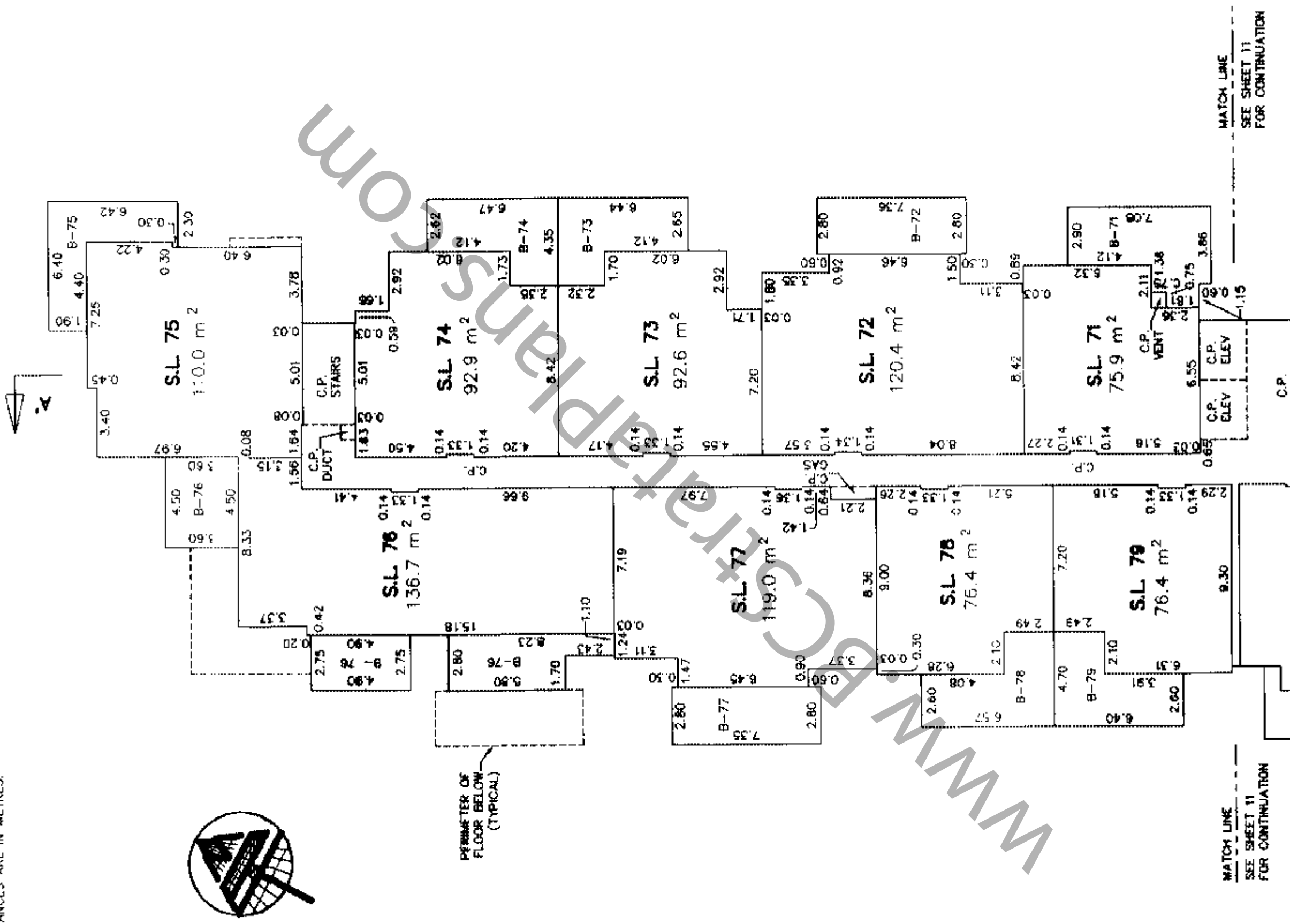
SHEET 12 OF 16 SHEETS

STRATA PLAN BCS 973

SCALE 1:200



ALL DISTANCES ARE IN METRES.



MATSON PECK & TOPLISS
SURVEYORS & ENGINEERS

#210 - 8171 COOK ROAD
RICHMOND, B.C.

V6Y 3T8

PH: 604-270-9331

FAX: 604-270-4137

CADFILE: 14000-4TMFL-STRATA.DWG

[Handwritten Signature]
8/30/04

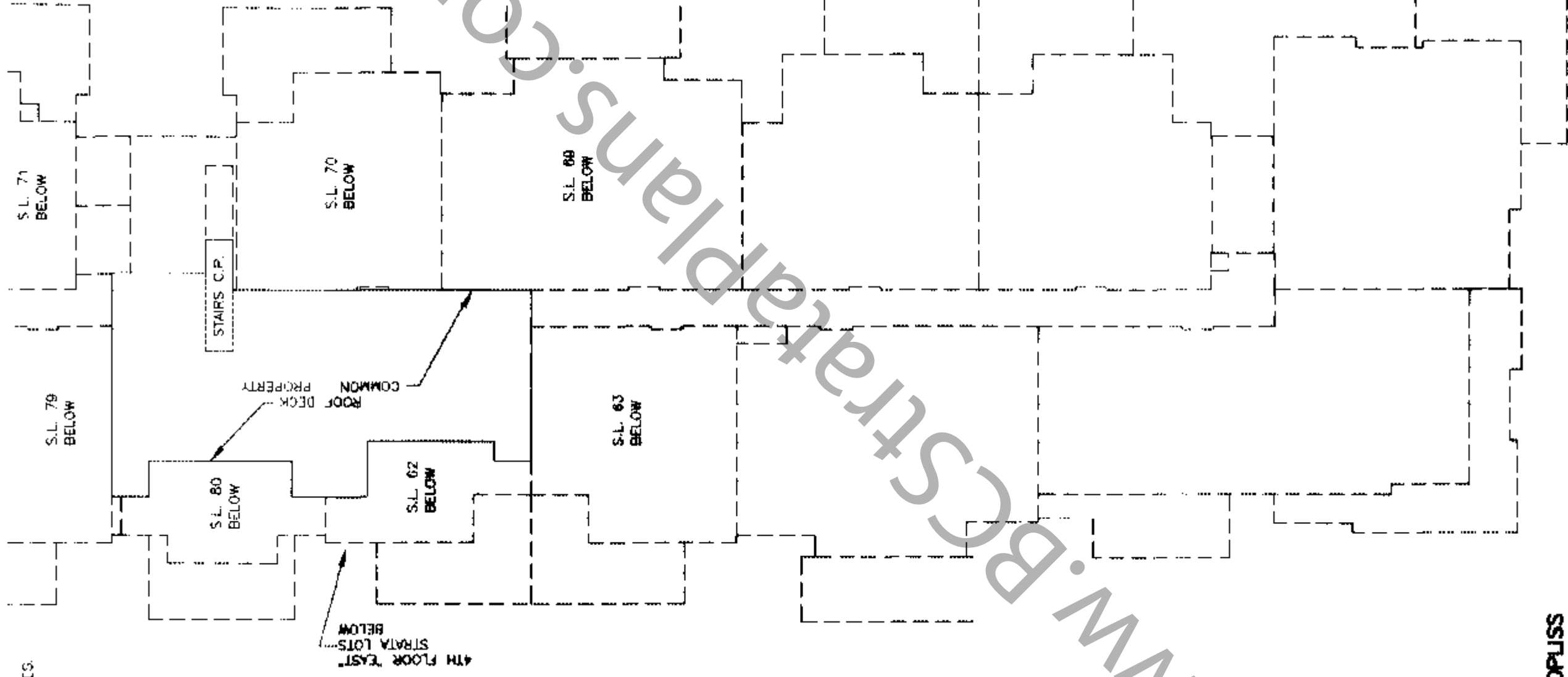
DATE

B.C.L.S.

SCALE 1:200



ALL DISTANCES ARE IN METRES.



MATSON PECK & TOPLISS
SURVEYORS & ENGINEERS
 #210 - 6171 COOK ROAD
 RICHMOND, B.C.
 V6Y 3T8
 PH: 604-270-9331
 FAX: 604-270-4137
 CADFILE: 14000-ROOF-DECK-STRATA.DWG

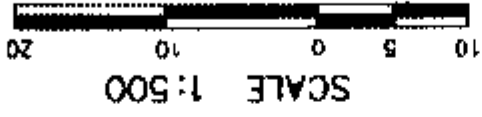


DATE

[Handwritten signature]
 8/30/04

S.L. 75	C.P. STAIRS	S.L. 74	S.L. 73	S.L. 72	S.L. 71	S.L. 70	S.L. 69	S.L. 68	S.L. 67	S.L. 66	S.L. 65	S.L. 64	S.L. 63	S.L. 62	S.L. 61	S.L. 60	S.L. 59	S.L. 58	S.L. 57	S.L. 56	S.L. 55	S.L. 54	S.L. 53	S.L. 52	S.L. 51	S.L. 50	S.L. 49	S.L. 48	S.L. 47	S.L. 46	S.L. 45	S.L. 44	S.L. 43	S.L. 42	S.L. 41	S.L. 40	S.L. 39	S.L. 38	S.L. 37	S.L. 36	S.L. 35	S.L. 34	S.L. 33	S.L. 32	S.L. 31	S.L. 30	S.L. 29	S.L. 28	S.L. 27	S.L. 26	S.L. 25	S.L. 24	S.L. 23	S.L. 22	S.L. 21	S.L. 20	S.L. 19	S.L. 18	S.L. 17	S.L. 16	S.L. 15	S.L. 14	S.L. 13	S.L. 12	S.L. 11	S.L. 10	S.L. 9	S.L. 8	S.L. 7	S.L. 6	S.L. 5	S.L. 4	S.L. 3	S.L. 2	S.L. 1	S.L. 0	S.L. -1	S.L. -2	S.L. -3	S.L. -4	S.L. -5	S.L. -6	S.L. -7	S.L. -8	S.L. -9	S.L. -10	S.L. -11	S.L. -12	S.L. -13	S.L. -14	S.L. -15	S.L. -16	S.L. -17	S.L. -18	S.L. -19	S.L. -20	S.L. -21	S.L. -22	S.L. -23	S.L. -24	S.L. -25	S.L. -26	S.L. -27	S.L. -28	S.L. -29	S.L. -30	S.L. -31	S.L. -32	S.L. -33	S.L. -34	S.L. -35	S.L. -36	S.L. -37	S.L. -38	S.L. -39	S.L. -40	S.L. -41	S.L. -42	S.L. -43	S.L. -44	S.L. -45	S.L. -46	S.L. -47	S.L. -48	S.L. -49	S.L. -50	S.L. -51	S.L. -52	S.L. -53	S.L. -54	S.L. -55	S.L. -56	S.L. -57	S.L. -58	S.L. -59	S.L. -60	S.L. -61	S.L. -62	S.L. -63	S.L. -64	S.L. -65	S.L. -66	S.L. -67	S.L. -68	S.L. -69	S.L. -70	S.L. -71	S.L. -72	S.L. -73	S.L. -74	S.L. -75
---------	-------------	---------	---------	---------	---------	---------	---------	---------	---------	---------	---------	---------	---------	---------	---------	---------	---------	---------	---------	---------	---------	---------	---------	---------	---------	---------	---------	---------	---------	---------	---------	---------	---------	---------	---------	---------	---------	---------	---------	---------	---------	---------	---------	---------	---------	---------	---------	---------	---------	---------	---------	---------	---------	---------	---------	---------	---------	---------	---------	---------	---------	---------	---------	---------	---------	---------	--------	--------	--------	--------	--------	--------	--------	--------	--------	--------	---------	---------	---------	---------	---------	---------	---------	---------	---------	----------	----------	----------	----------	----------	----------	----------	----------	----------	----------	----------	----------	----------	----------	----------	----------	----------	----------	----------	----------	----------	----------	----------	----------	----------	----------	----------	----------	----------	----------	----------	----------	----------	----------	----------	----------	----------	----------	----------	----------	----------	----------	----------	----------	----------	----------	----------	----------	----------	----------	----------	----------	----------	----------	----------	----------	----------	----------	----------	----------	----------	----------	----------	----------	----------	----------

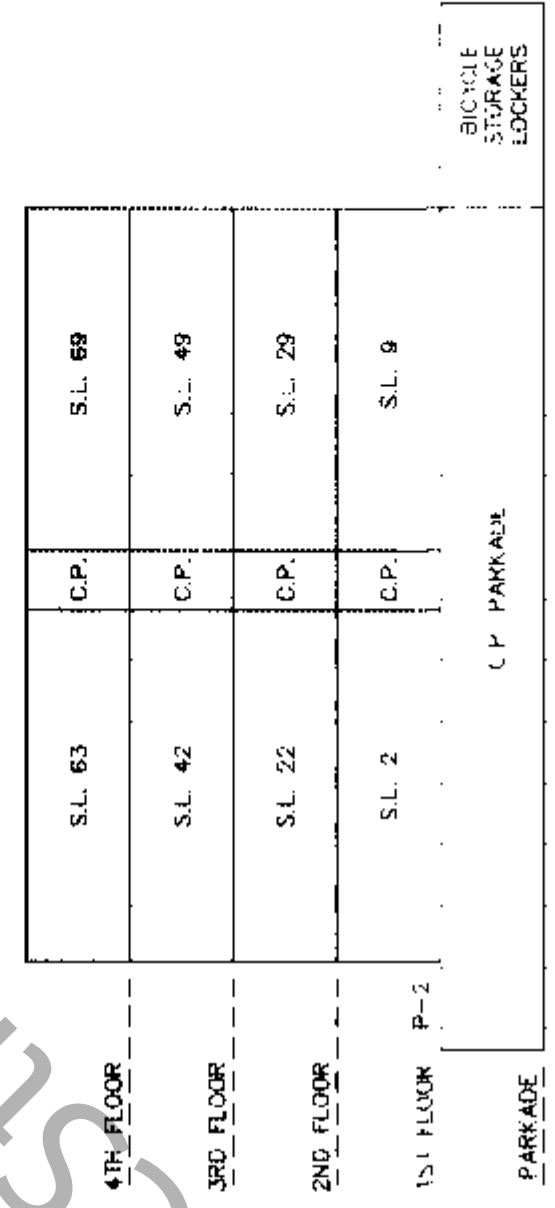
SECTION A - A'



SCALE 1:500
ALL DISTANCES ARE IN METRES.
SEE SHEETS 15 AND 16
FOR SCALE 1:200 DETAILS

WEST

EAST



SECTION B - B'

SCALE 1:200



ALL DISTANCES ARE IN METRES.

MATSON PECK & TOPLISS
SURVEYORS & ENGINEERS
#210 - 8171 COOK ROAD
RICHMOND, B.C.
V6Y 3T8
PH: 604-270-9331
FAX: 604-270-4137
CADFILE: 14000-SECTIONS-STRATA.DWG

DATE _____
B.C.L.S. _____
8/30/04

SECTION A - A'
"EAST" DETAIL

SHEET 15 OF 16 SHEETS

STRATA PLAN BCS 973

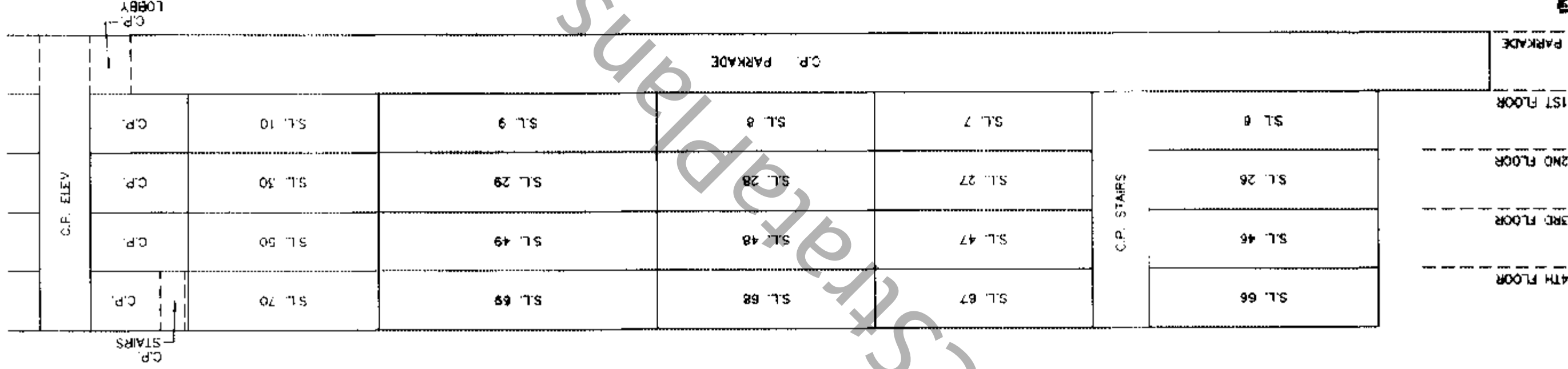
SEE SHEET 16
FOR CONTINUATION
MATCH LINE

SCALE 1:200



ALL DISTANCES ARE IN METRES.

SEE SHEET 16
FOR CONTINUATION
MATCH LINE



MATSON PECK & TOPLISS
SURVEYORS & ENGINEERS
#210 - 8171 COOK ROAD
RICHMOND, B.C.

YBY JTB
PH: 604-270-9331
FAX: 604-270-4137

CADFILE: 14000-SECTIONS-STRATA.DWG

DATE

B.C.L.S.

[Handwritten signature]
8/30/04

SECTION A - A'
"WEST" DETAIL

SHEET 16 OF 16 SHEETS

STRATA PLAN BCS 973

SCALE 1:200



ALL DISTANCES ARE IN METRES.

4TH FLOOR	S.L. 75	C.P. STAIRS	S.L. 74	S.L. 73	S.L. 72	S.L. 71	C.P. ELEV	C.P.	C.P. STAIRS
3RD FLOOR	S.L. 55		S.L. 54	S.L. 53	S.L. 52	S.L. 51		C.P.	
2ND FLOOR	S.L. 35		S.L. 34	S.L. 33	S.L. 32	S.L. 31		C.P.	
1ST FLOOR	S.L. 15		S.L. 14	S.L. 13	S.L. 12	S.L. 11		C.P.	
PARKADE	C.P. PARKADE								C.P. LOBBY

"WEST"

MATCH LINE
SEE SHEET 15
FOR CONTINUATION

MATCH LINE
SEE SHEET 15
FOR CONTINUATION

MATSON PECK & TOPLISS
SURVEYORS & ENGINEERS

#210 - 8171 COOK ROAD
RICHMOND, B.C.

V6V 3T8
PH: 604-270-9331
FAX: 604-270-4137

CADFILE: 14000-SECTIONS-STRATA.DWG

DATE

[Handwritten signature]
10/28/04

B.C.L.S.