

STRATA PLAN OF LOT 90 OF DISTRICT LOT 29, GROUP 1, PLAN 51875, NEW WESTMINSTER DISTRICT

10-301

STRATA PLAN N.W. 2155

DEPOSITED AND REGISTERED IN THE LAND TITLE OFFICE AT NEW WESTMINSTER, B.C. THIS 8 DAY OF JUNE, 1984.

E. J. Povey
ASSISTANT DEPUTY REGISTRAR
REF. No. 26324-956

CIVIC ADDRESS:
SEE SHEETS 7 AND 8
"HUMPHRIES COURT"

PLAN 19908

PLAN 50533

PLAN 9324

BLDG. 1, BLDG. 2, BLDG. 3, BLDG. 4

REMAINDER B, REM. 3, LANE

15 TH AVENUE

KINGSWAY

HUMPHRIES COURT

SCALE: 1:750

ALL DISTANCES ARE IN METRES

ASTRONOMIC BEARINGS ARE DERIVED FROM PLAN 50533

STRATA LOT DIMENSIONS ARE TO 1/2 OF WALLS

PATIOS, BALCONIES AND PARKING ARE COMMON PROPERTY.

SL DENOTES STRATA LOT
m² DENOTES SQUARE METRES
© DENOTES COMMON PROPERTY

THE ADDRESS FOR THE SERVICE OF DOCUMENTS ON THE STRATA CORPORATION IS:
THE OWNERS, STRATA PLAN N.W. 2155
150-3665, KINGSWAY,
VANCOUVER, B.C.
V5R 5W2

I, J.G. CAMERON OF SURREY, BRITISH COLUMBIA LAND SURVEYOR, HEREBY CERTIFY THAT THE BUILDINGS ERECTED ON THE PARCEL DESCRIBED ABOVE ARE WHOLLY WITHIN THE EXTERNAL BOUNDARIES OF THAT PARCEL.
DATED AT SURREY, B.C.
THIS 4 DAY OF January, 1984.

CAMERON & ASSOCIATES
113-9547, 152 nd ST.
SURREY, B.C.

THIS PLAN LIES WITHIN THE GREATER VANCOUVER REGIONAL DISTRICT

B.C.L.S.

FILE: 83-A-2251

BUILDING LOCATIONS

STRATA PLAN N.W. 2155

SCALE: 1:250

15 TH AVE.

KINGSWAY

BUILDING 1 (A)

BUILDING 3 (C)

DATED THIS 4 DAY OF January, 1984

B.C.L.S.

FILE: 83-A-2251

BUILDING LOCATIONS

STRATA PLAN N.W. 2155

SCALE: 1:250

15 TH AVENUE

BUILDING 2 (B)

BUILDING 3 (C)

BUILDING 4 (D)

DATED THIS 4 DAY OF January, 1984

B.C.L.S.

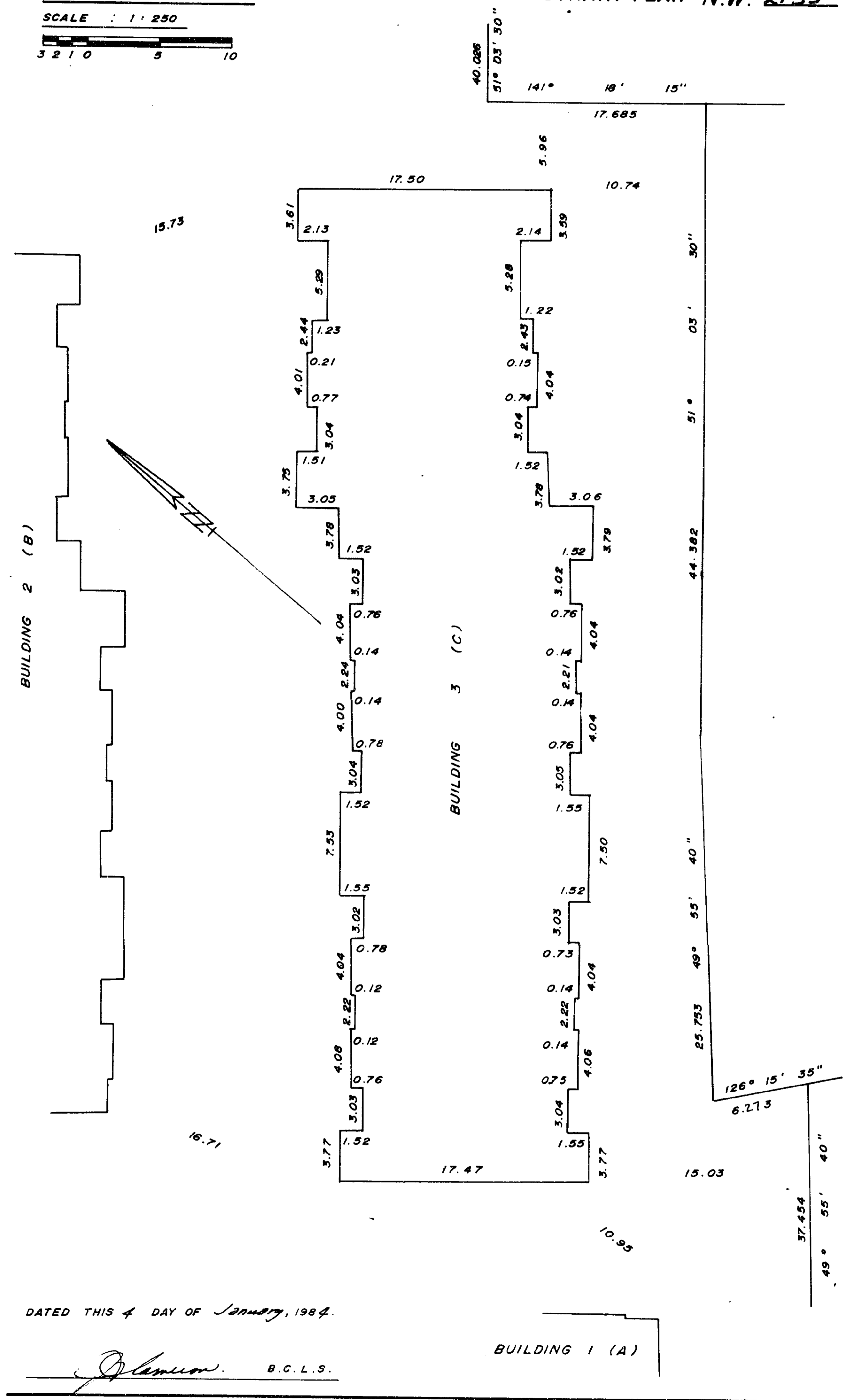
FILE: 83-A-2251

1

BUILDING LOCATIONS

SCALE : 1 : 250
3 2 1 0 5 10

STRATA PLAN N.W. 2155



DATED THIS 4 DAY OF January, 1984.

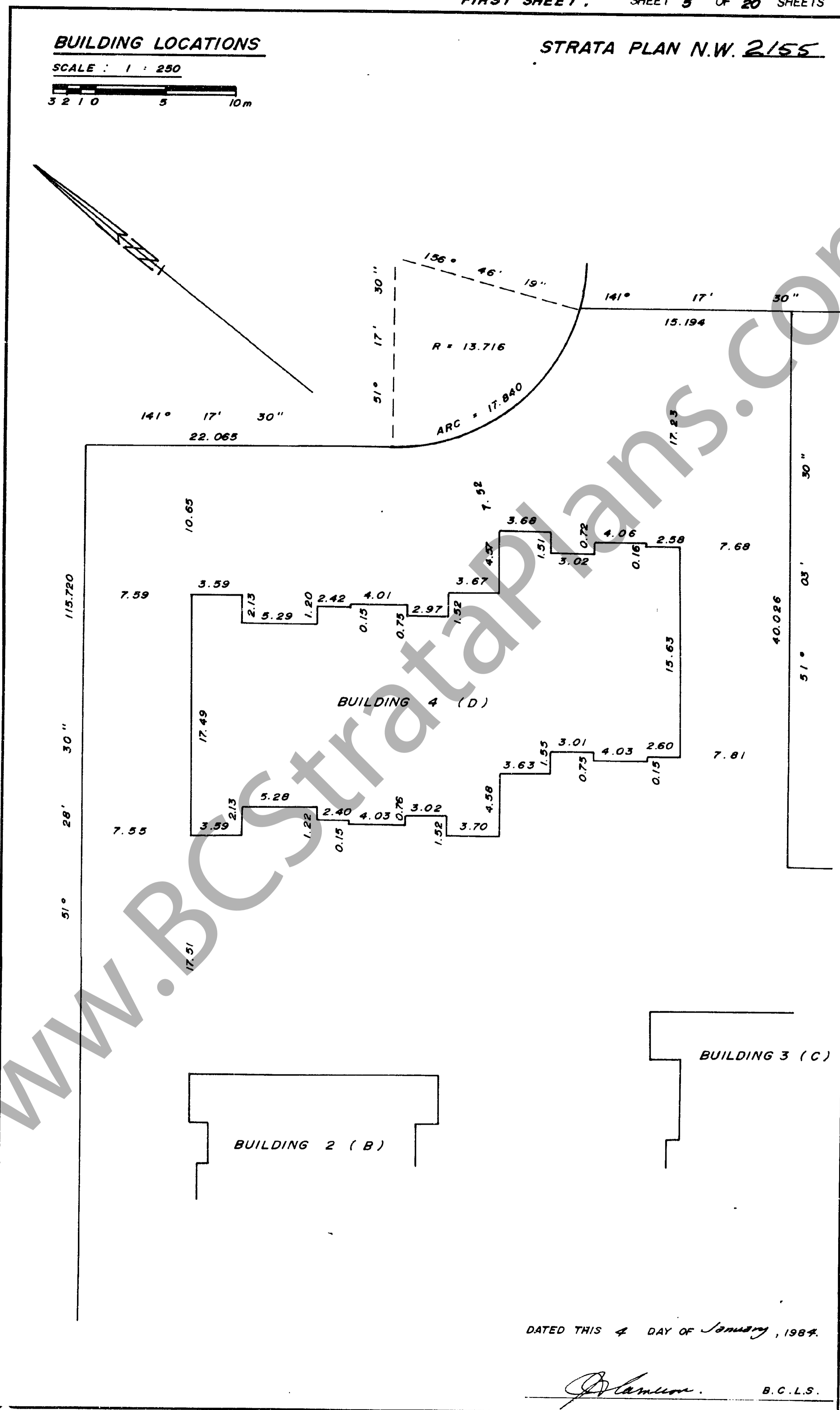
Plumson B.C.L.S.

BUILDING 1 (A)

BUILDING LOCATIONS

SCALE : 1 : 250
3 2 1 0 5 10m

STRATA PLAN N.W. 2155



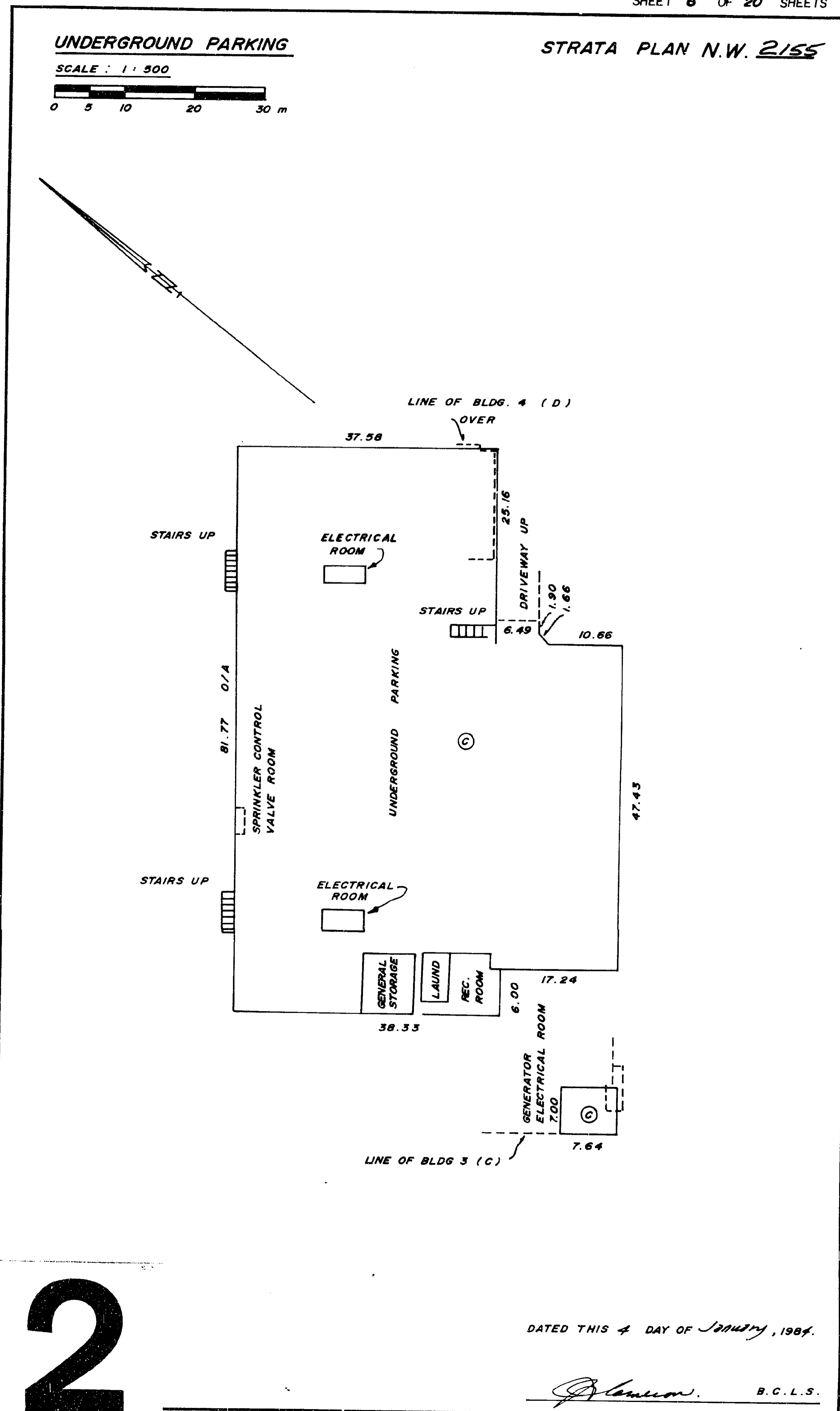
DATED THIS 4 DAY OF January, 1984.

Plumson B.C.L.S.

UNDERGROUND PARKING

SCALE : 1 : 500
0 5 10 20 30 m

STRATA PLAN N.W. 2155



DATED THIS 4 DAY OF January, 1984.

Plumson B.C.L.S.

2

CONDOMINIUM ACT
CIVIC ADDRESS

STRATA PLAN N.W. 2155

BLDG.	STRATA LOT	UNIT NUMBER	ADDRESS
BLDG. 1 (A)	1	13	7559, HUMPHRIES COURT
	2	14	7559, HUMPHRIES COURT
	3	8	7561, HUMPHRIES COURT
	4	7	7561, HUMPHRIES COURT
	5	5	7561, HUMPHRIES COURT
	6	6	7561, HUMPHRIES COURT
	7	1	7563, HUMPHRIES COURT
	8	2	7563, HUMPHRIES COURT
	9	15	7559, HUMPHRIES COURT
	10	16	7559, HUMPHRIES COURT
	11	12	7561, HUMPHRIES COURT
	12	11	7561, HUMPHRIES COURT
BLDG. 2 (B)	13	9	7561, HUMPHRIES COURT
	14	10	7561, HUMPHRIES COURT
	15	3	7563, HUMPHRIES COURT
	16	4	7563, HUMPHRIES COURT
	17	2	7557, HUMPHRIES COURT
	18	1	7557, HUMPHRIES COURT
	19	6	7553, HUMPHRIES COURT
	20	5	7553, HUMPHRIES COURT
	21	7	7553, HUMPHRIES COURT
	22	8	7553, HUMPHRIES COURT
	23	14	7553, HUMPHRIES COURT
	24	13	7553, HUMPHRIES COURT
BLDG. 3 (C)	25	15	7553, HUMPHRIES COURT
	26	16	7553, HUMPHRIES COURT
	27	3	7557, HUMPHRIES COURT
	28	4	7557, HUMPHRIES COURT
	29	10	7555, HUMPHRIES COURT
	30	9	7553, HUMPHRIES COURT
	31	11	7553, HUMPHRIES COURT
	32	12	7553, HUMPHRIES COURT
	33	18	7553, HUMPHRIES COURT
	34	17	7553, HUMPHRIES COURT
	35	19	7553, HUMPHRIES COURT
	36	20	7553, HUMPHRIES COURT
BLDG. 3 (C)	37	20	7565, HUMPHRIES COURT
	38	19	7565, HUMPHRIES COURT
	39	17	7565, HUMPHRIES COURT
	40	18	7565, HUMPHRIES COURT
	41	12	7567, HUMPHRIES COURT
	42	11	7567, HUMPHRIES COURT
	43	9	7567, HUMPHRIES COURT
	44	10	7567, HUMPHRIES COURT
	45	4	7569, HUMPHRIES COURT
	46	3	7569, HUMPHRIES COURT
	47	1	7569, HUMPHRIES COURT
	48	2	7569, HUMPHRIES COURT
BLDG. 3 (C)	49	24	7565, HUMPHRIES COURT
	50	23	7565, HUMPHRIES COURT
	51	21	7565, HUMPHRIES COURT
	52	22	7565, HUMPHRIES COURT
	53	16	7567, HUMPHRIES COURT
	54	15	7567, HUMPHRIES COURT
	55	13	7567, HUMPHRIES COURT
	56	14	7567, HUMPHRIES COURT
	57	8	7569, HUMPHRIES COURT

DATED THIS 4 DAY OF January, 1984.

[Signature] B.C.L.S.

CONDOMINIUM ACT
CIVIC ADDRESS

STRATA PLAN N.W. 2155

BLDG.	STRATA LOT	UNIT NUMBER	ADDRESS
BLDG. 3 (C) CONT	58	7	7569, HUMPHRIES COURT
	59	5	7569, HUMPHRIES COURT
BLDG. 4 (D)	60	6	7569, HUMPHRIES COURT
	61	2	7551, HUMPHRIES COURT
	62	1	7551, HUMPHRIES COURT
	63	3	7551, HUMPHRIES COURT
	64	4	7551, HUMPHRIES COURT
	65	10	7549, HUMPHRIES COURT
	66	9	7549, HUMPHRIES COURT
	67	6	7551, HUMPHRIES COURT
	68	5	7551, HUMPHRIES COURT
	69	7	7551, HUMPHRIES COURT
	70	8	7551, HUMPHRIES COURT
	71	12	7549, HUMPHRIES COURT
	72	11	7549, HUMPHRIES COURT

DATED THIS 4 DAY OF January, 1984.

[Signature] B.C.L.S.

CONDOMINIUM ACT

STRATA PLAN N.W. 2155

S.L. No.	SHEET No.	FORM 1	FORM 2	FORM 3
		SCHEDULE OF UNIT ENTITLEMENT	SCHEDULE OF INTEREST UPON DESTRUCTION	SCHEDULE OF VOTING RIGHTS
		UNIT ENTITLEMENT	INTEREST UPON DESTRUCTION	No. OF VOTES
1	11	85	680	1
2	11, 12	85	680	1
3	11	85	680	1
4	11, 12	85	680	1
5	11	85	680	1
6	11, 12	85	680	1
7	11	85	680	1
8	11, 12	85	680	1
9	11, 12	116	750	1
10	11, 12	116	750	1
11	11, 12	116	750	1
12	11, 12	116	750	1
13	11, 12	116	750	1
14	11, 12	116	750	1
15	11, 12	116	750	1
16	11, 12	116	750	1
17	13	85	680	1
18	13, 14	85	680	1
19	13	85	680	1
20	13, 14	85	680	1
21	13	85	680	1
22	13, 14	85	680	1
23	13	85	680	1
24	13, 14	85	680	1
25	13	84	670	1
26	13, 14	84	670	1
27	13	85	680	1
28	13, 14	85	680	1
29	13	85	680	1
30	13, 14	85	680	1
31	13, 14	116	750	1
32	13, 14	116	750	1
33	13, 14	116	750	1
34	13, 14	116	750	1
35	13	84	670	1
36	13, 14	84	670	1
37	15	84	670	1
38	15, 16	84	670	1
39	15	85	680	1
40	15, 16	85	680	1
41	15	85	680	1
42	15, 16	85	680	1
43	15	85	680	1
44	15, 16	85	680	1
45	15	85	680	1
46	15, 16	85	680	1
47	15	65	565	1
48	15, 16	65	565	1
49	15	84	670	1
50	15, 16	84	670	1
51	15, 16	116	750	1
52	15, 16	116	750	1
53	15, 16	116	750	1
54	15, 16	116	750	1
55	15	85	680	1
56	15, 16	85	680	1
57	15	85	680	1
58	15, 16	85	680	1
59	15	65	565	1
60	15, 16	65	565	1
AGGREGATE		5508	41,380	60

DATED THIS 4 DAY OF January, 1984.

[Signature] B.C.L.S.

3

CONDOMINIUM ACT

STRATA PLAN N.W. 2/55

S.L. No.	SHEET No.	FORM 1 SCHEDULE OF UNIT ENTITLEMENT UNIT ENTITLEMENT	FORM 2 SCHEDULE OF INTEREST UPON DESTRUCTION INTEREST UPON DESTRUCTION	FORM 3 SCHEDULE OF VOTING RIGHTS No. OF VOTES
61	17	65	565	1
62	17 18	65	565	1
63	17	84	670	1
64	17 18	84	670	1
65	17	84	670	1
66	17 18	84	670	1
67	17	65	565	1
68	17 18	65	565	1
69	17	115	740	1
70	17 18	115	740	1
71	17	115	740	1
72	17 18	115	740	1
AGGREGATE		6564	49,280	72

STATUTORY DECLARATION

I / WE THE UNDERSIGNED DO SOLEMNLY DECLARE THAT
 (1) I / WE THE UNDERSIGNED AM / ARE THE OWNER - DEVELOPER OR (IN THE ALTERNATIVE) THE DULY AUTHORIZED AGENT OF THE OWNER - DEVELOPER .
 (2) THE STRATA PLAN IS ENTIRELY FOR RESIDENTIAL USE .
 I / WE MAKE THIS SOLEMN DECLARATION CONSCIENTIOUSLY BELIEVING IT TO BE TRUE AND KNOWING THAT IT IS OF THE FORCE AND EFFECT AS IF MADE UNDER OATH

OWNERS:

HUMPHRIES COURT HOLDINGS LTD.

AUTHORIZED SIGNATORY

CANADA LIFE MORTGAGE SERVICES LTD.

AUTHORIZED SIGNATORY

AUTHORIZED SIGNATORY

CANADIAN MORTGAGE & HOUSING CORPORATION

AUTHORIZED SIGNATORY

AUTHORIZED SIGNATORY

HER MAJESTY THE QUEEN IN RIGHT OF THE PROVINCE OF BRITISH COLUMBIA .

H. C. ROUNDS C.G.A.
 AUTHORIZED REPRESENTATIVE
 MINISTRY OF LANDS, PLOTS AND HOUSING
 OR HIS AUTHORIZED REPRESENTATIVE .

A COMMISSIONER FOR TAKING AFFIDAVITS WITHIN THE PROVINCE OF B.C.

ACCEPTED AS TO FORMS 1, 2 AND 3.
 THIS 4th DAY OF JANUARY, 1984.

FOR THE SUPERINTENDENT OF INSURANCE

DATED THIS 4th DAY OF JANUARY, 1984.

B.C.L.S.

FORM 10
 CERTIFICATE OF APPROVAL
 I, HEREBY CERTIFY THAT THE CONSTRUCTION OF THE BUILDINGS SITUATED ON LOT 90, D.L. 29, GP. 1, PLAN 51875, N.W.D. HAVE BEEN APPROVED FOR STRATA PLAN DEVELOPMENT. DATED THIS --- DAY OF ---, 1984.

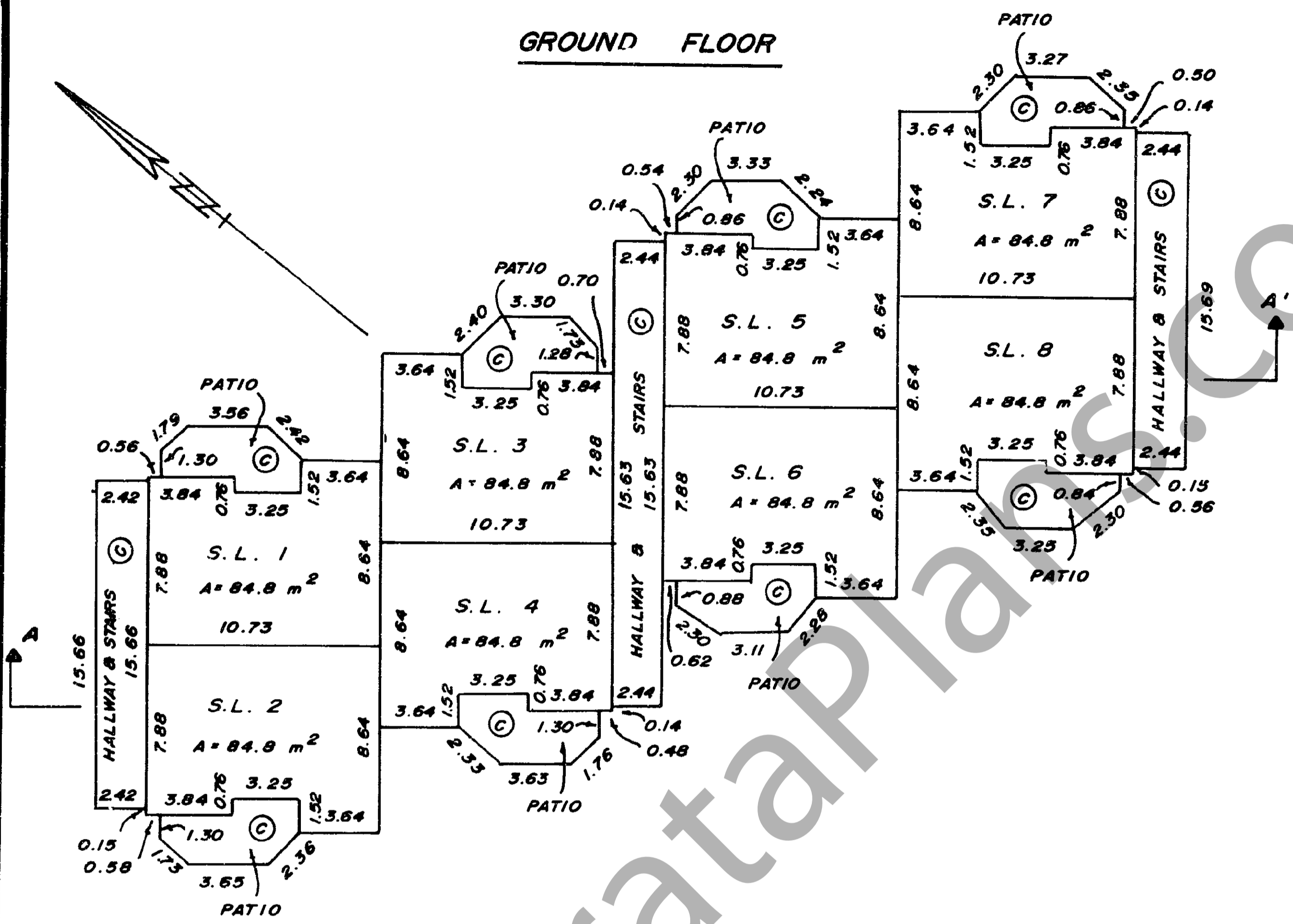
APPROVING OFFICER, MUNICIPALITY OF BURNABY

BUILDING 1 (A)

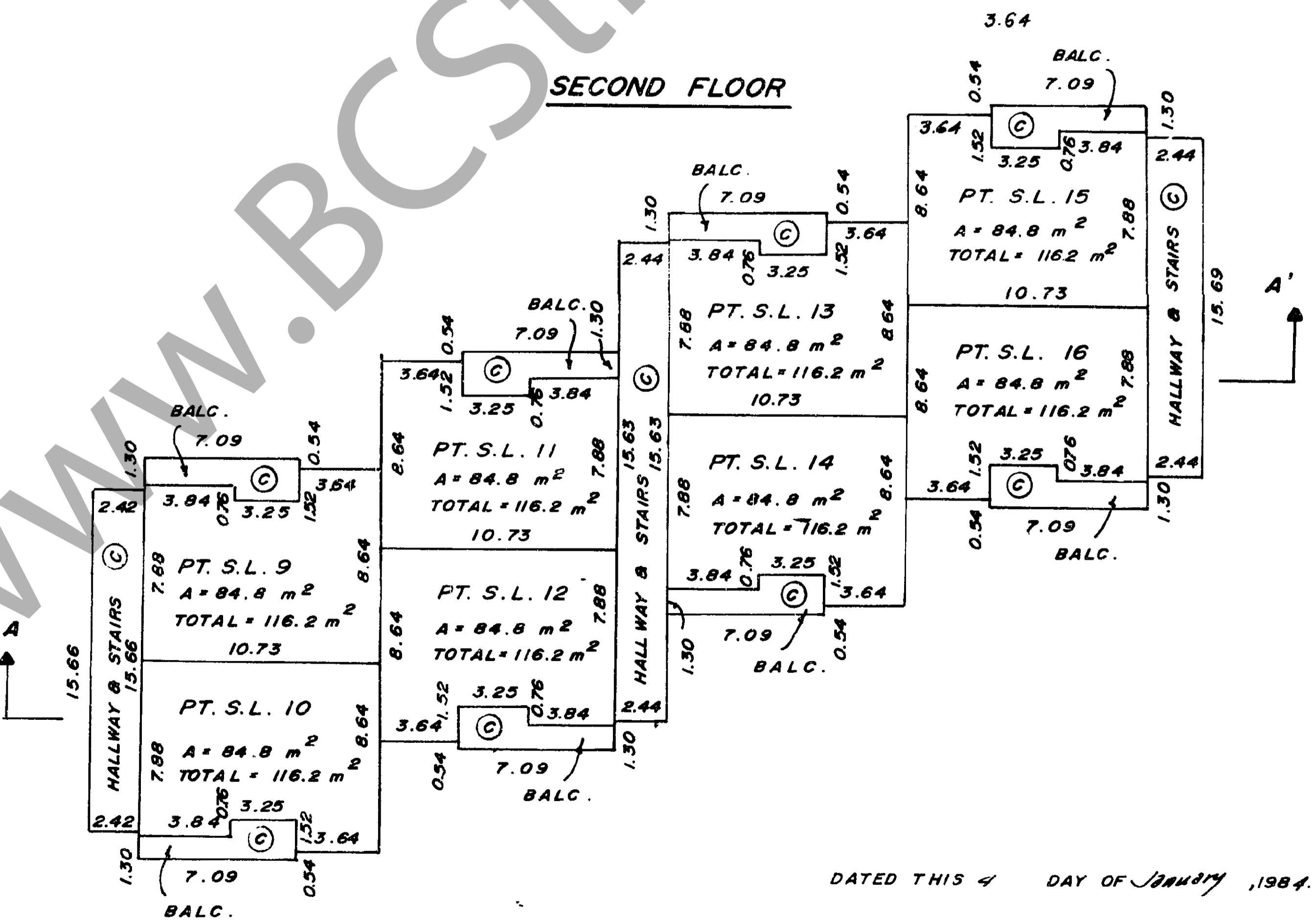
STRATA PLAN N.W. 2/55

SCALE : 1 : 250
 3 2 1 0 5 10

GROUND FLOOR



SECOND FLOOR



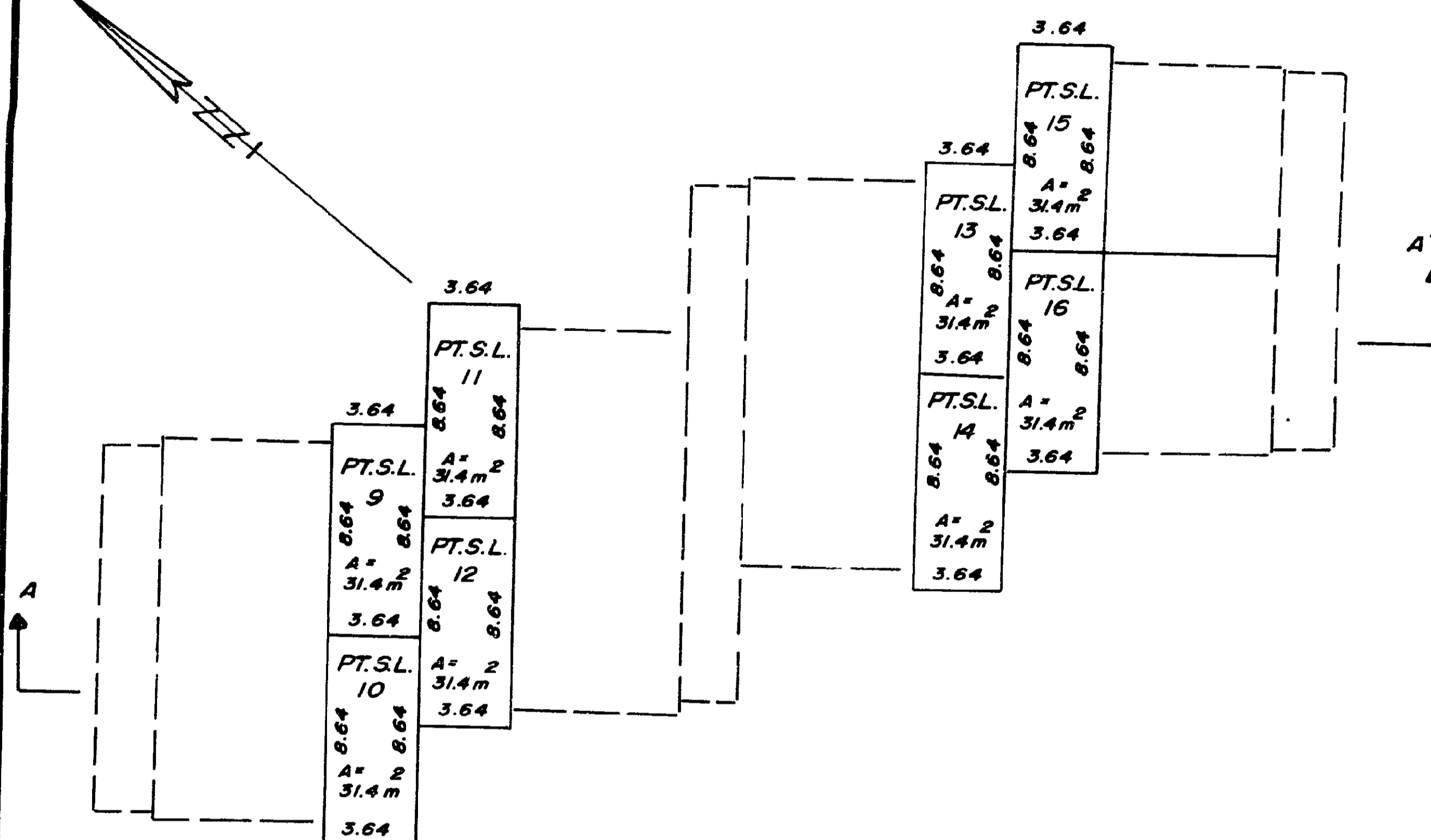
DATED THIS 4th DAY OF JANUARY, 1984.

BUILDING 1 (A)

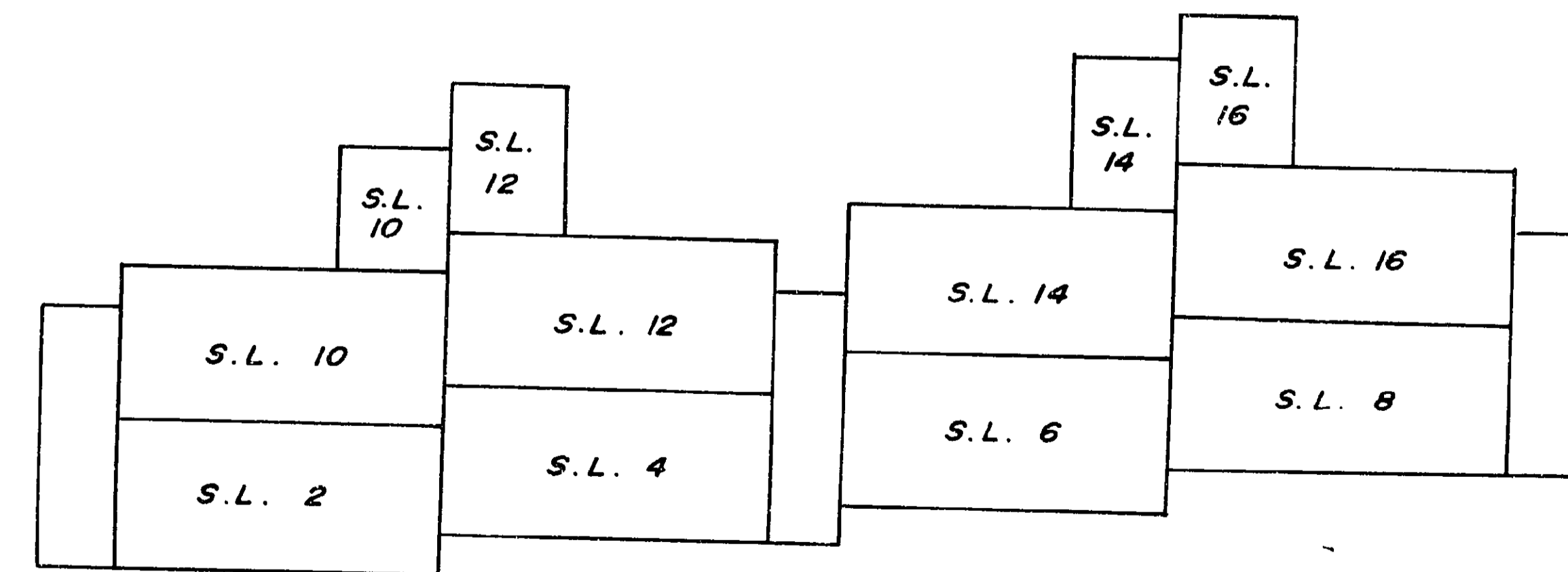
STRATA PLAN N.W. 2/55

SCALE : 1 : 250
 3 2 1 0 5 10 m

THIRD FLOOR



SECTION A - A'

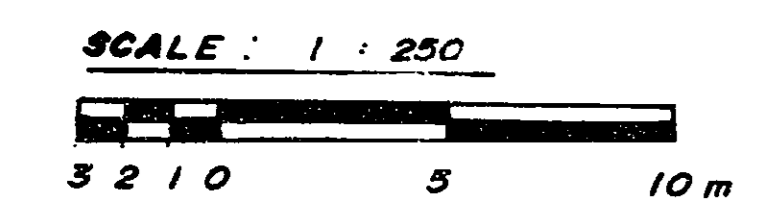


DATED THIS 4th DAY OF JANUARY, 1984.

4

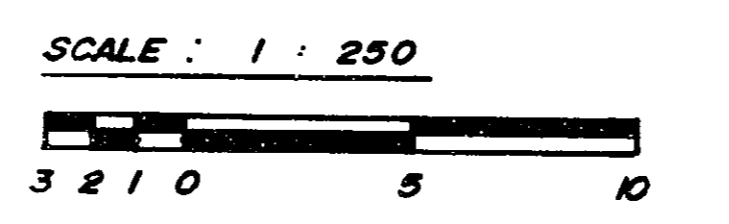
BUILDING 2 (B)

STRATA PLAN N.W. 2155



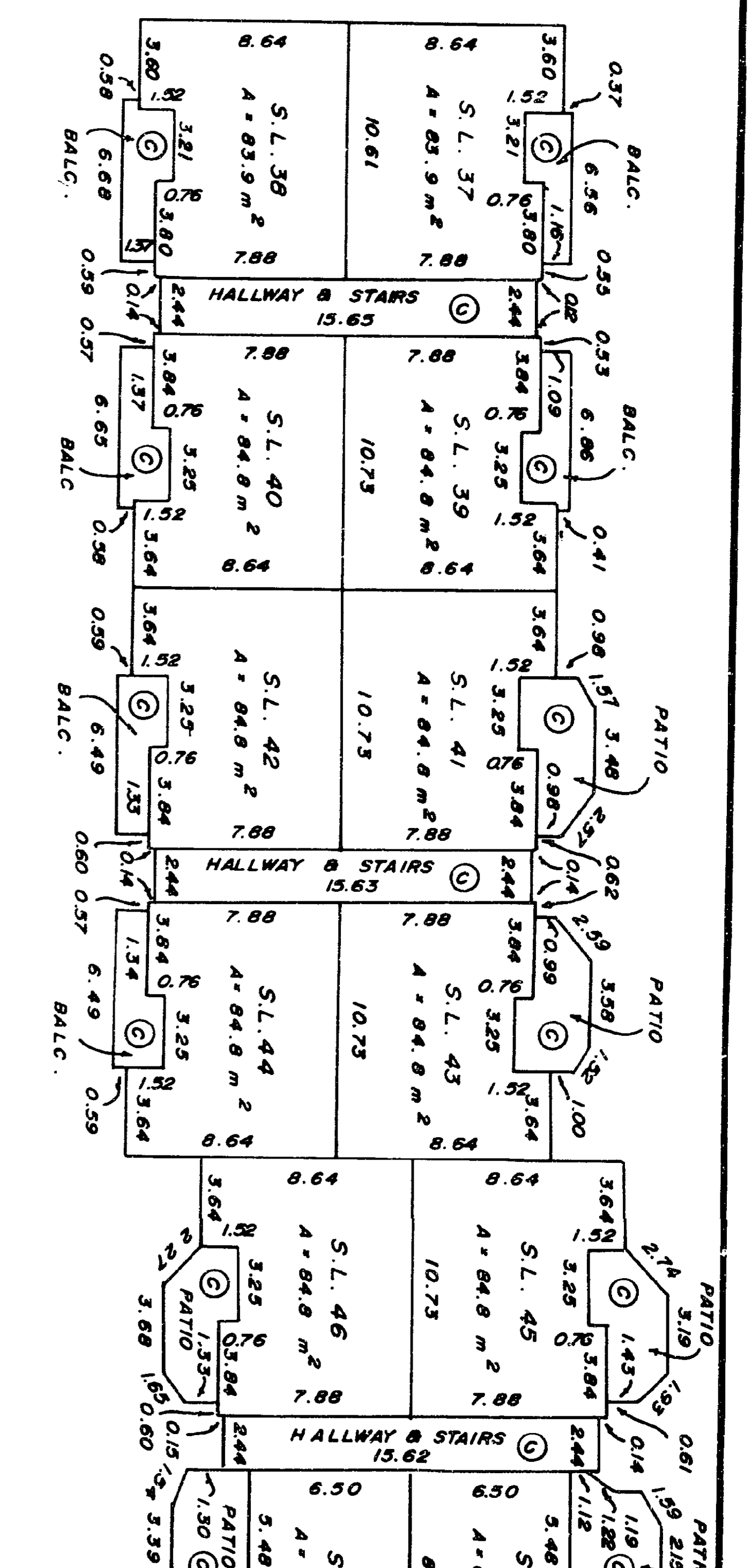
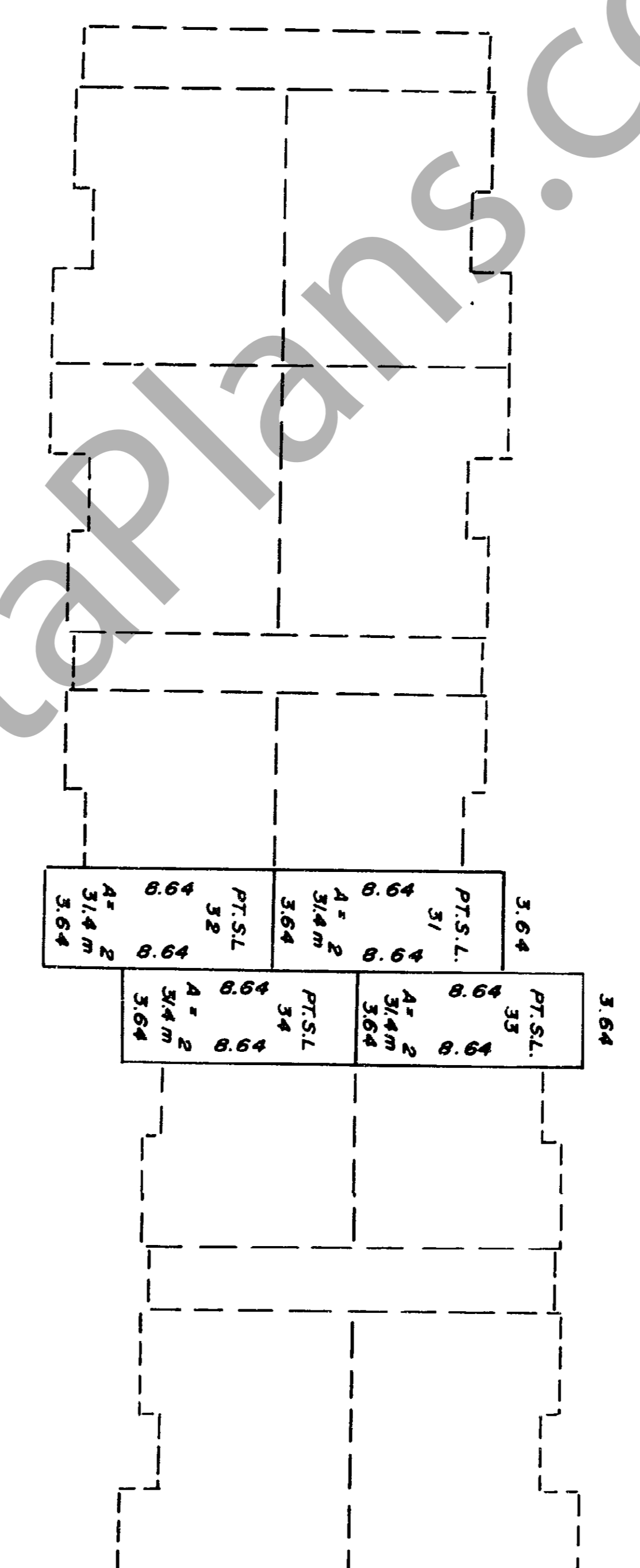
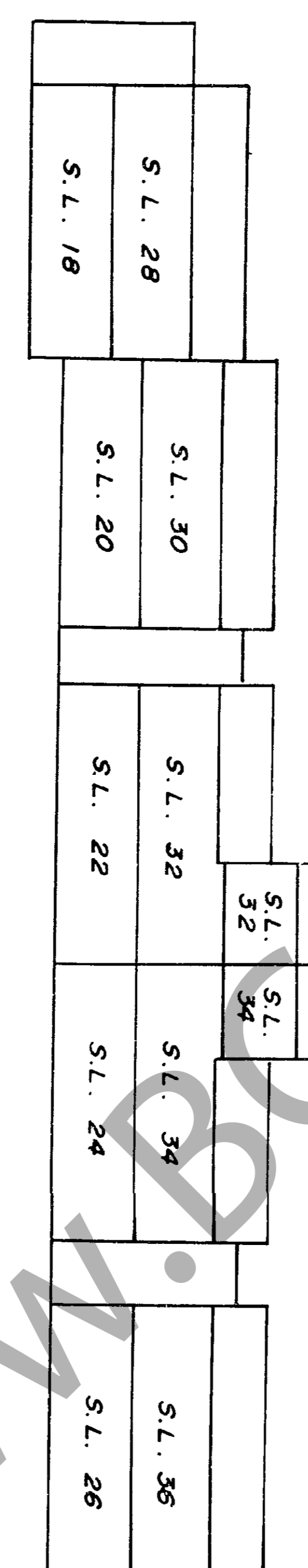
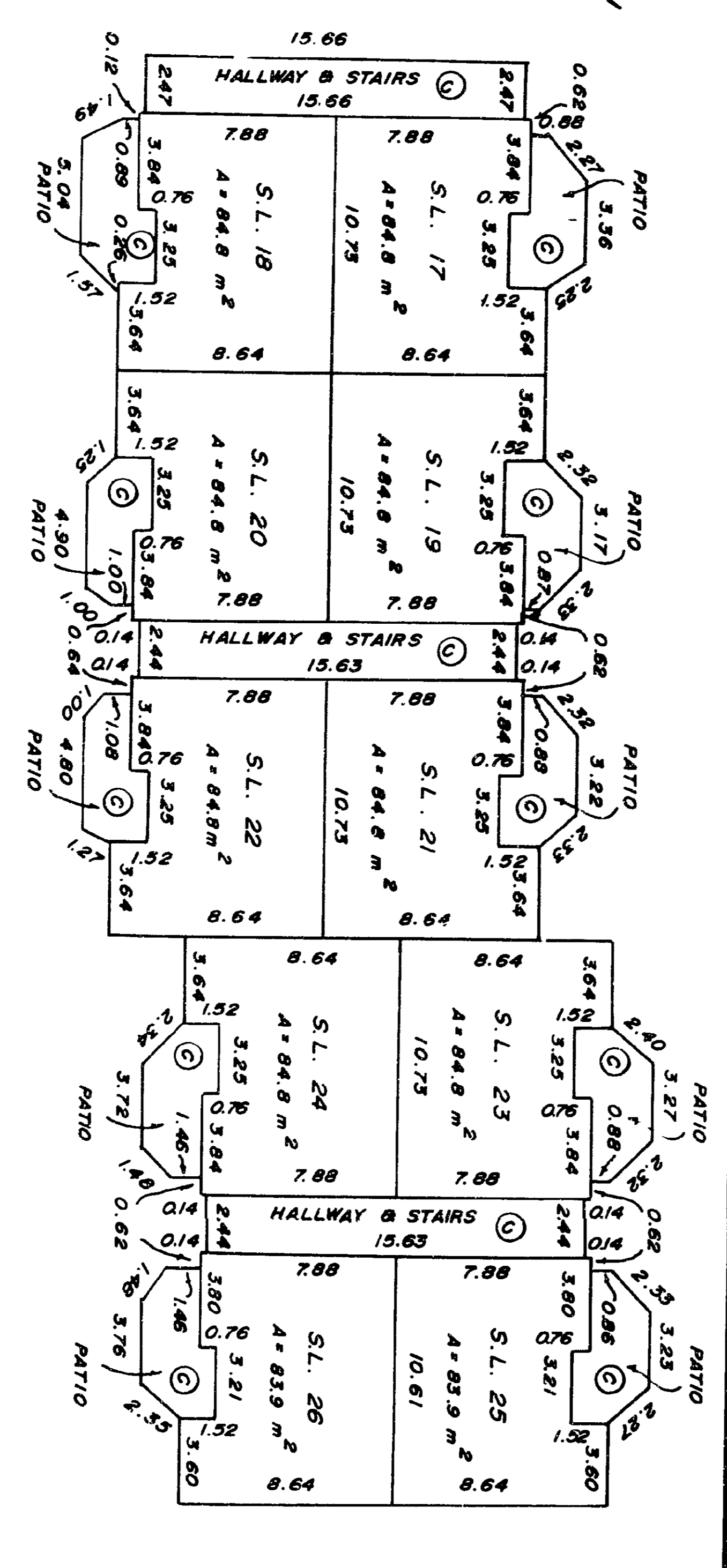
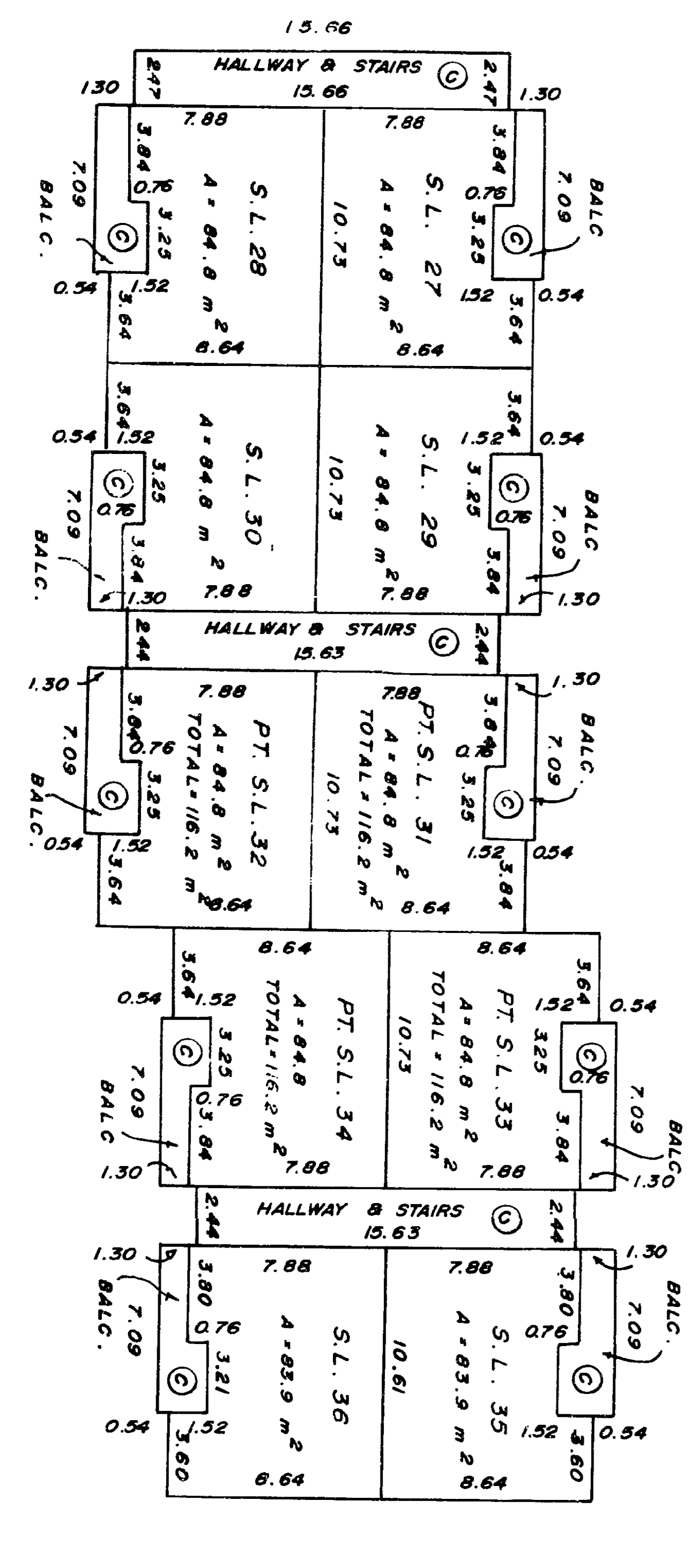
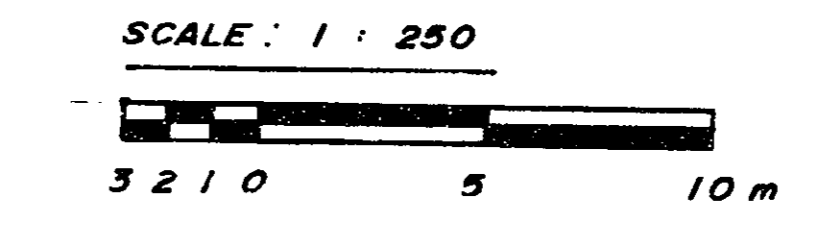
BUILDING 2 (B)

STRATA PLAN N.W. 2155



BUILDING 3 (C)

STRATA PLAN N.W. 2155



SECOND FLOOR

GROUND FLOOR

THIRD FLOOR

SECOND FLOOR

GROUND FLOOR

DATED THIS 4 DAY OF January, 1984.

[Signature] B.C.L.S.

FILE: 83-A-2251

DATED THIS 4 DAY OF January, 1984.

[Signature] B.C.L.S.

FILE: 83-A-2251

DATED THIS 4 DAY OF January, 1984.

[Signature] B.C.L.S.

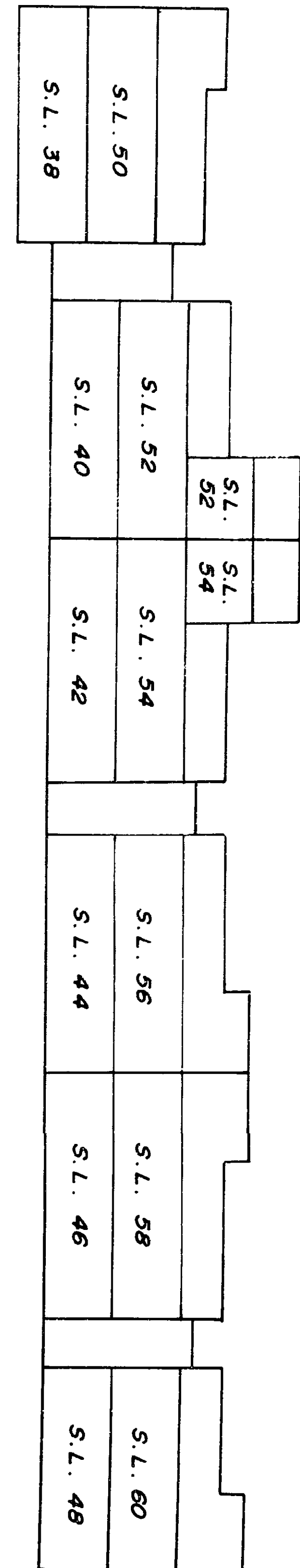
FILE: 83-A-2251

5

BUILDING 3 (C)

STRATA PLAN N.W. 2155

SCALE : 1 : 250
3 2 1 0 5 10m



3.64	3.64	3.64	3.64	3.64	3.64
31.4m	31.4m	31.4m	31.4m	31.4m	31.4m
A = 8.64 m ²	A = 8.64 m ²	A = 8.64 m ²	A = 8.64 m ²	A = 8.64 m ²	A = 8.64 m ²
PT.S.L. 51	PT.S.L. 53	PT.S.L. 54	PT.S.L. 51	PT.S.L. 53	PT.S.L. 54

THIRD FLOOR

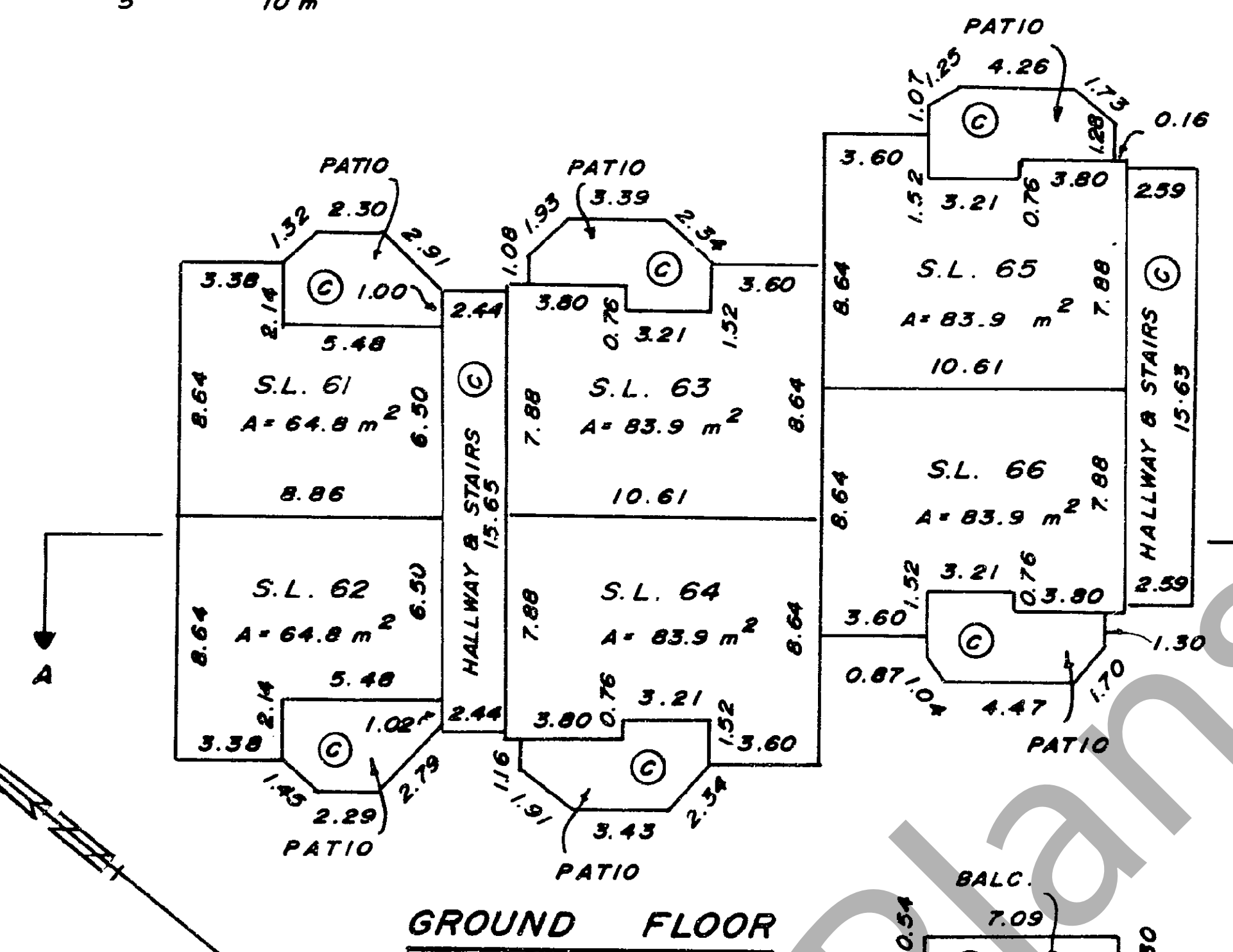
DATED THIS 4 DAY OF January, 1984.

[Signature] B.C.L.S.

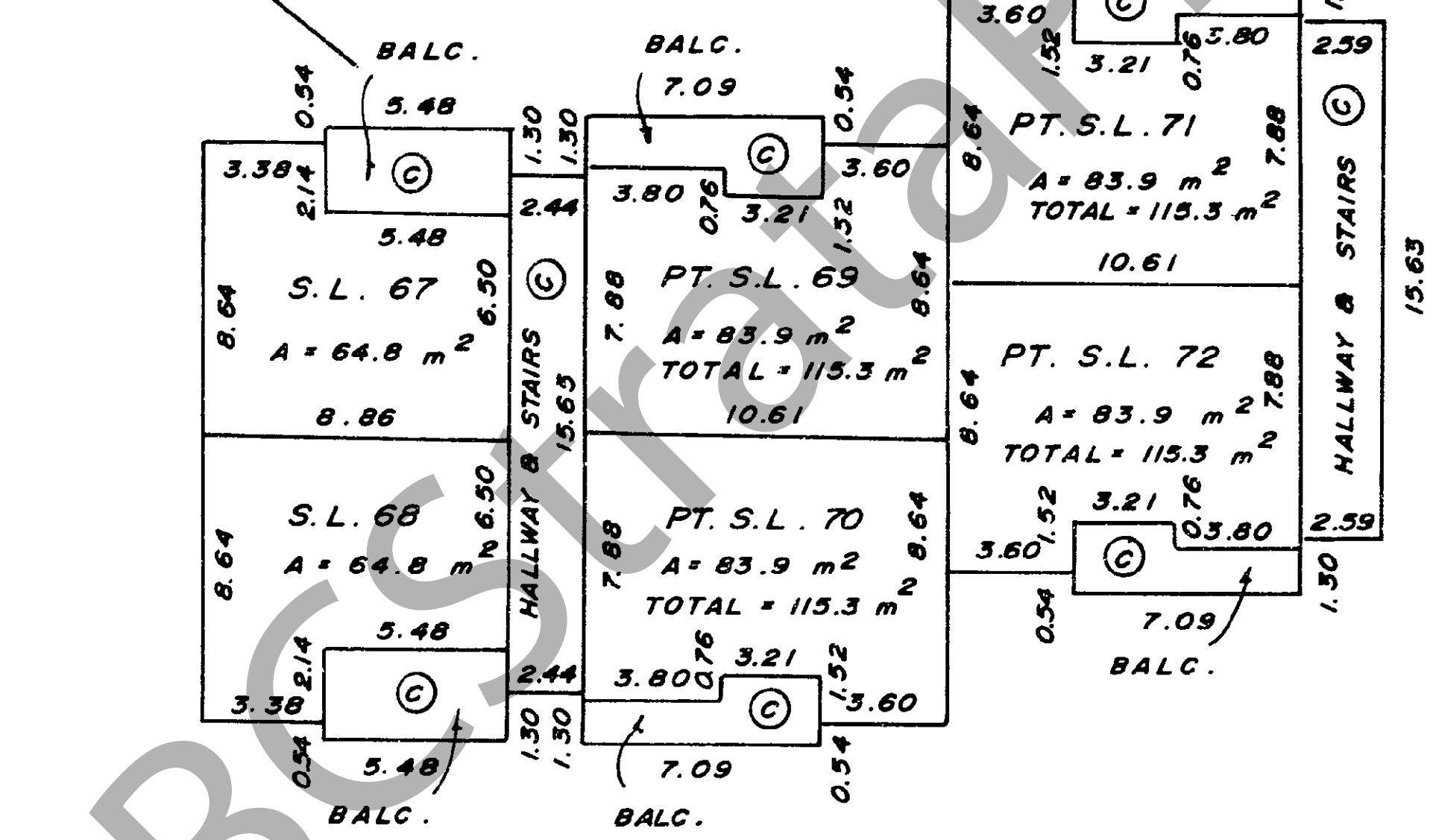
BUILDING 4 (D)

STRATA PLAN N.W. 2155

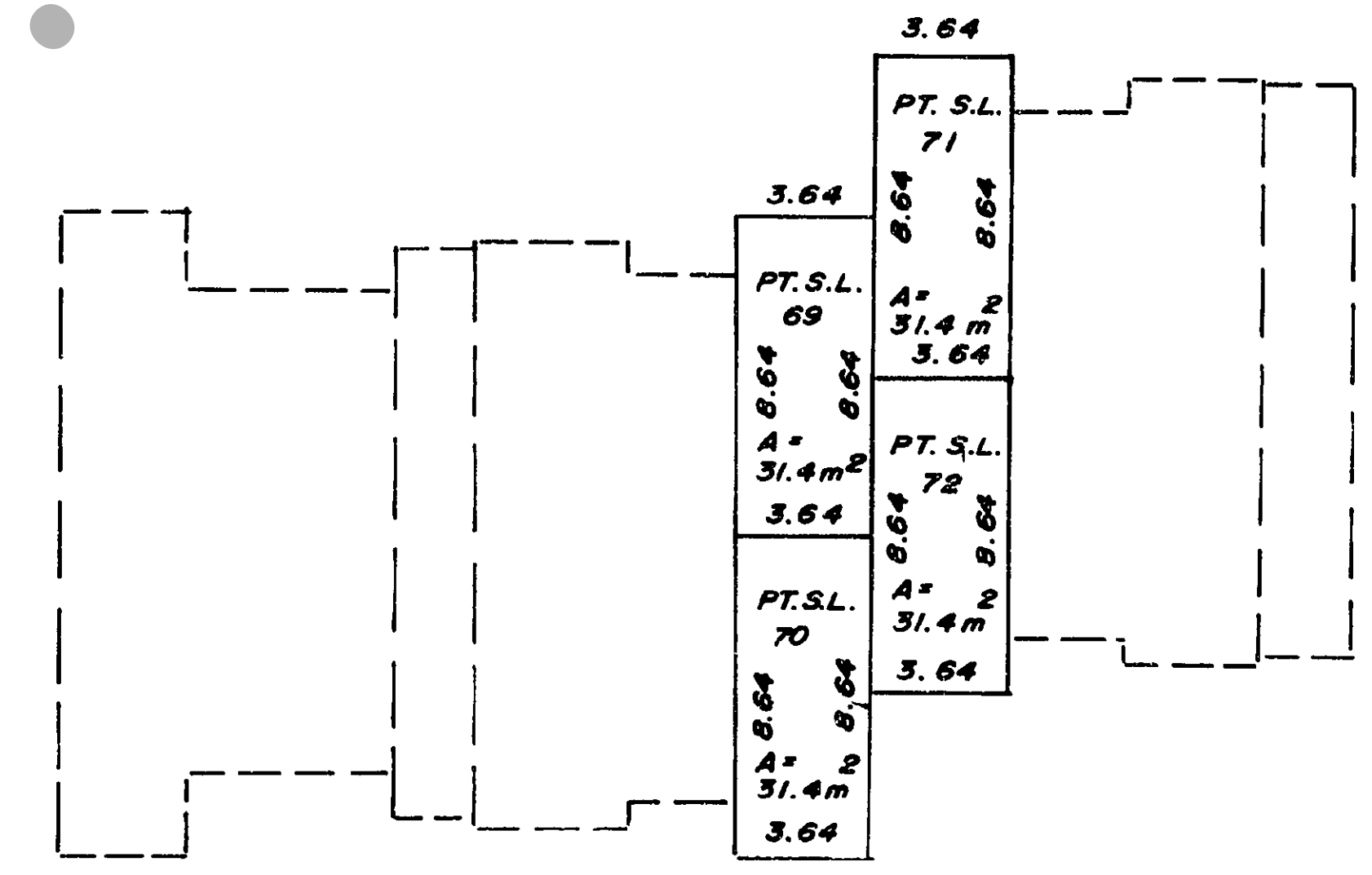
SCALE : 1 : 250
3 2 1 0 5 10m



GROUND FLOOR



SECOND FLOOR



THIRD FLOOR

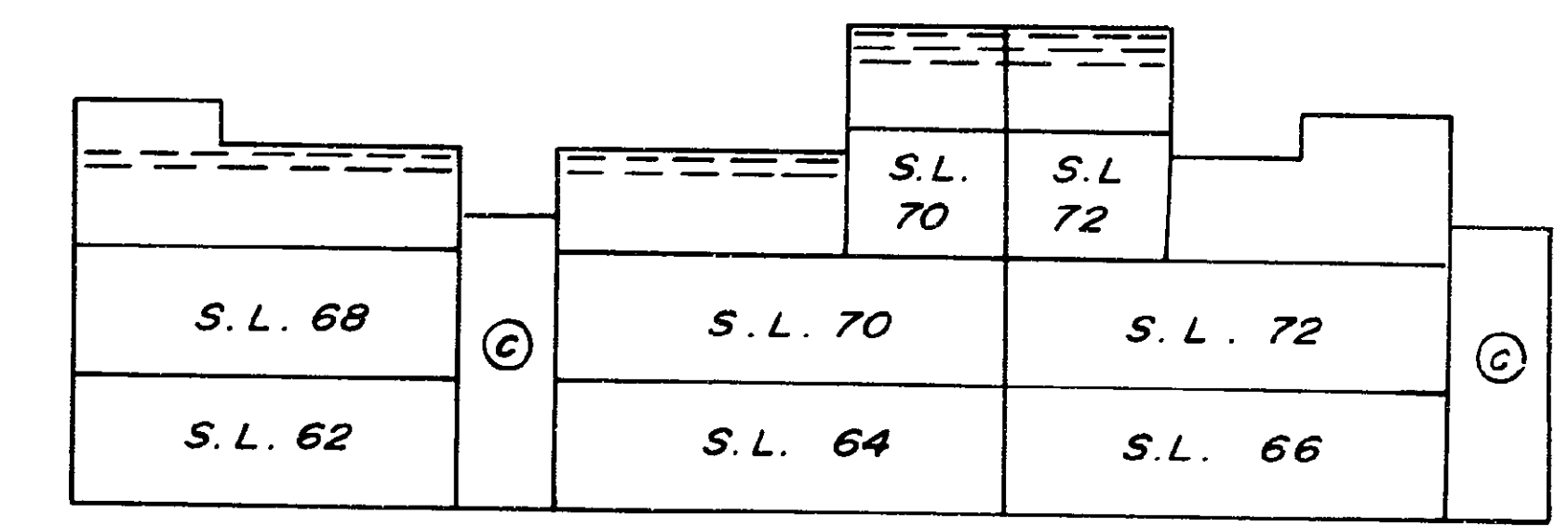
DATED THIS 4 DAY OF January, 1984.

[Signature] B.C.L.S.

BUILDING 4 (D)

STRATA PLAN N.W. 2155

SECTION A - A'



6

DATED THIS 4 DAY OF January, 1984.

[Signature] B.C.L.S.

STRATA PLAN N.W. 2155

RECORD OF BY-LAWS AND ORDERS, ETC.

Table with 4 columns: FILING NUMBER, FILING DATE, DOCUMENT DATE, DOCUMENT NATURE OF PARTICULARS. Contains a large empty grid for recording entries.

DATED THIS 4 DAY OF January, 1984.

[Signature] B.C.L.S.

STRATA PLAN N.W. 2155

DEALINGS AFFECTING THE COMMON PROPERTY

Table with 4 columns: REGISTRATION NUMBER, REGISTRATION DATE, DOCUMENT DATE, DOCUMENT NATURE OF PARTICULARS. Contains detailed entries for registrations and documents.

DATED THIS 4 DAY OF January, 1984.

[Signature] B.C.L.S.