

**STRATA PLAN OF LOT A DISTRICT
LOT 121 GROUP 1 NEW WESTMINSTER
DISTRICT PLAN 79448**

FIRST SHEET, SHEET 1 OF 23 SHEETS

STRATA PLAN LMS 535

MUNICIPALITY OF BURNABY

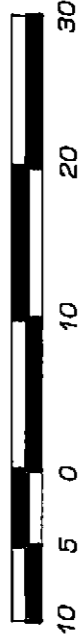
B.C.G.S. 926.026

DEPOSITED AND REGISTERED IN THE LAND
TITLE OFFICE AT NEW WESTMINSTER, B.C.
THIS 9 DAY OF Sept. 1992

[Signature]
Deputy REGISTRAR
BF 342110

Scale 1 : 500

All distances are in metres

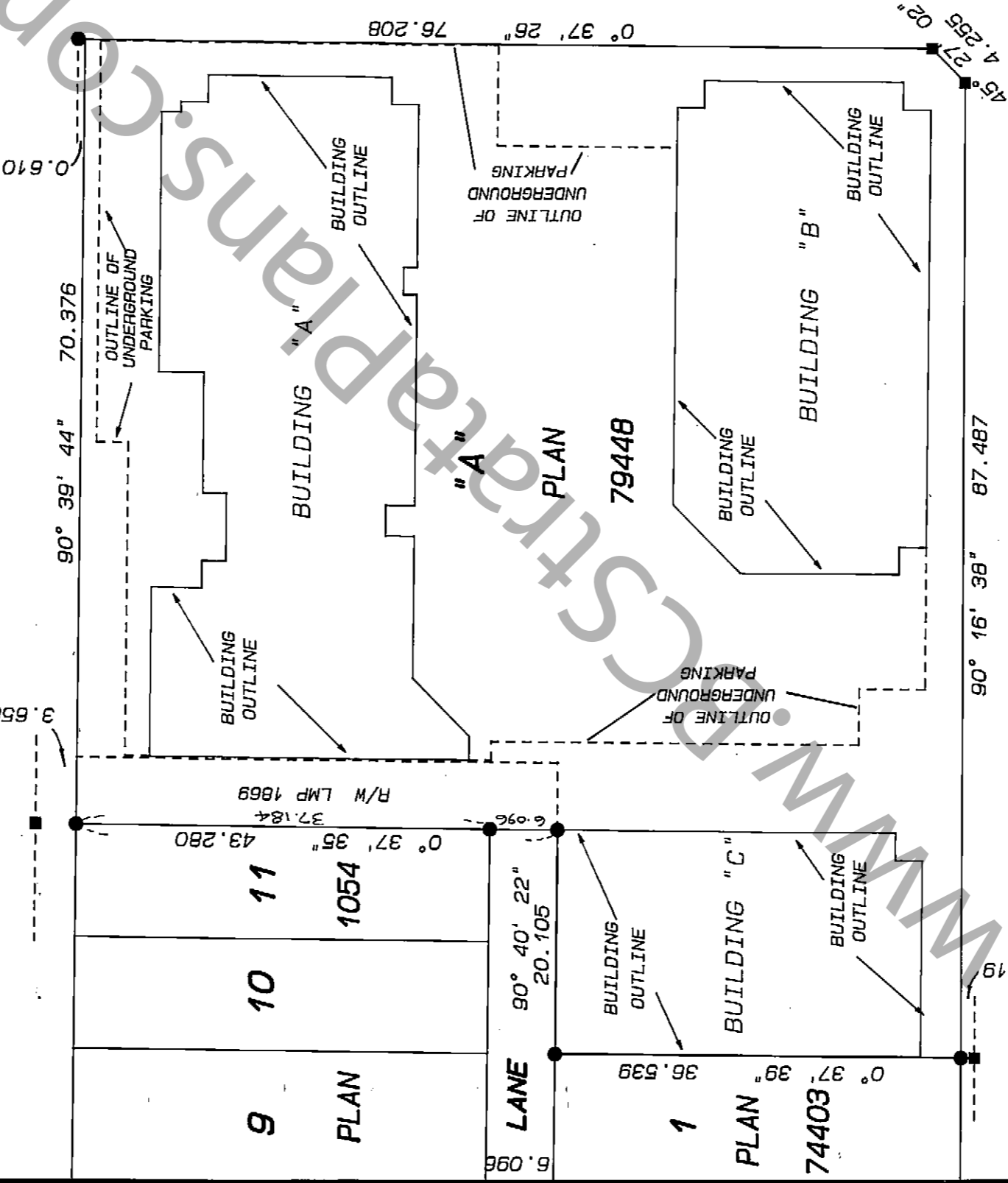


LEGEND

- BEARINGS ARE GRID BEARINGS
DERIVED FROM PLAN 79448
- S.L. DENOTES STRATA LOT
- L.C.P. DENOTES LIMITED COMMON PROPERTY
- PT. DENOTES PART
- m² DENOTES SQUARE METRES
- ⊙ DENOTES COMMON PROPERTY
- DENOTES STANDARD IRON POST FOUND
- DENOTES LEAD PLUG FOUND

CIVIC ADDRESS: -
"CARLETON SQUARE"
4161-4191 HASTINGS STREET
"CARLETON TERRACE"
4160 ALBERT STREET
BURNABY, B.C.

ALBERT STREET



HASTINGS STREET

THE ADDRESS FOR SERVICE OF
DOCUMENTS ON THE STRATA
CORPORATION IS :

THE OWNERS, STRATA PLAN LMS 535
~~3400 - 650 WEST GEORGIA STREET -
VANCOUVER, B.C.
V6B 4P7~~

5/11/93 B0401895
% Stratwest Management Ltd.
203-1865 Marine Drive
West Vancouver, B.C.
V7V 1J7

THIS PLAN CONTAINS LIMITED
COMMON PROPERTY UNDER
SECTION 53 (2), CONDOMINIUM ACT

LYON, FLYNN & ASSOCIATES
British Columbia Land Surveyors
#102 - 1537 W. 8th Avenue
Vancouver, B.C. V6J 1T5
Tel: 797-8777 Fax: 797-8794

I, ROBERT G. FLYNN OF LADNER, B.C., BRITISH
COLUMBIA LAND SURVEYOR HEREBY CERTIFY THAT
THE BUILDING ERECTED ON THE PARCEL
DESCRIBED ABOVE LIES WHOLLY WITHIN THE
EXTERNAL BOUNDARIES OF THAT PARCEL.
DATED AT VANCOUVER, B.C. THIS
19TH. DAY OF AUGUST, 1992

FILE NUMBER : - 87 - 2227.S

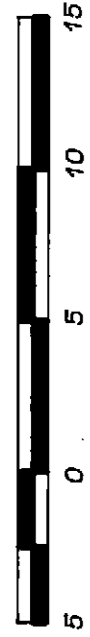
THIS PLAN LIES WITHIN THE
GREATER VANCOUVER REGIONAL DISTRICT

[Signature]
B.C.L.S.

BUILDING LOCATIONS

Scale 1 : 250

All distances are in metres



FIRST SHEET, SHEET 2 OF 23 SHEETS

STRATA PLAN LMS 535

ALBERT STREET

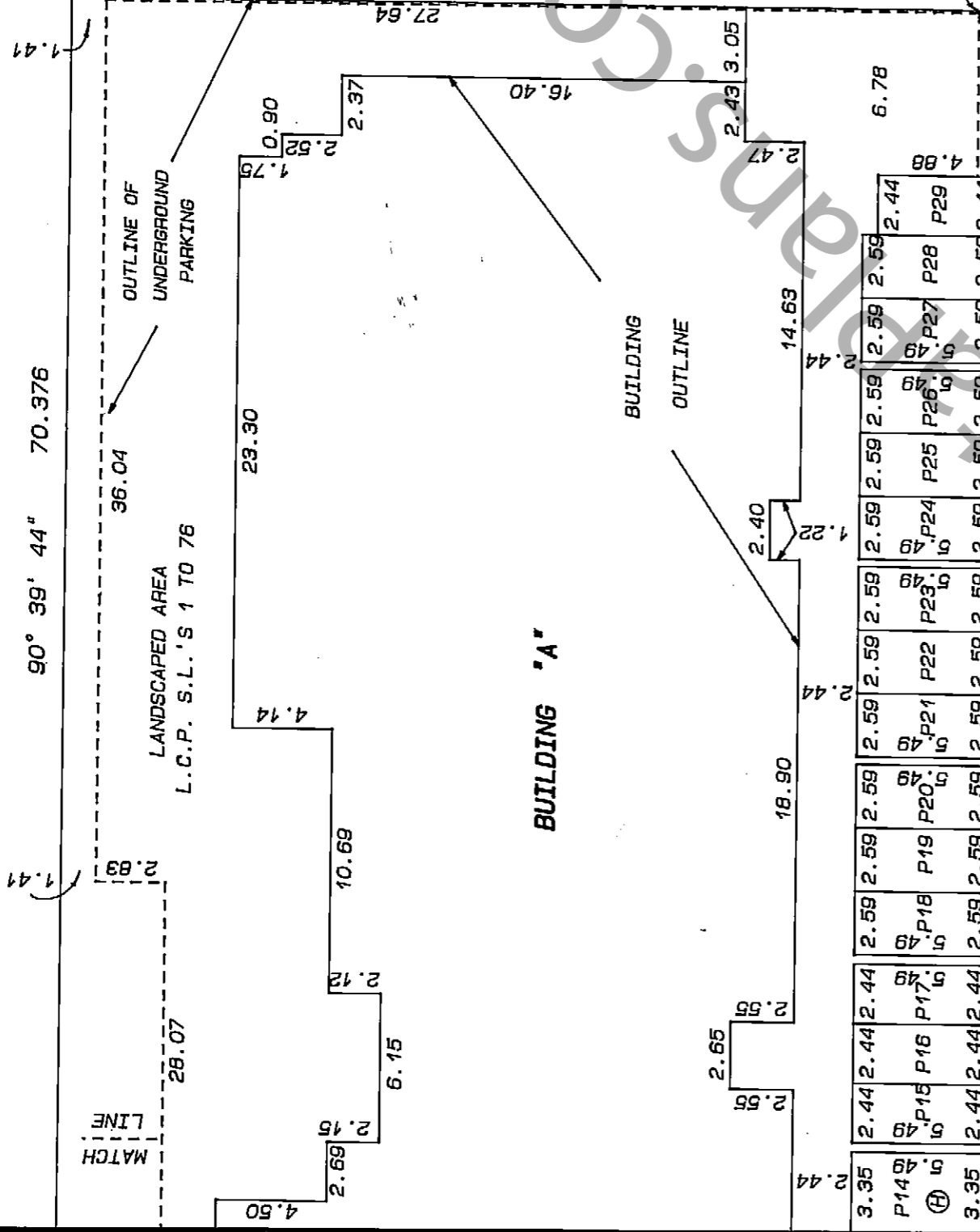
90° 39' 44" 70.376

MATCH LINE

LANDSCAPED AREA
L.C.P. S.L.'S 1 TO 76

OUTLINE OF
UNDERGROUND
PARKING

CLEAR
0.13



CARLETON AVENUE

CLEAR
0.08

DRIVEWAY AREA

"A" PLAN 79448

L.C.P. S.L.'S 1, 2, 77 AND 78

L.C.P. S.L.'S 1, 2, 77 AND 78

0° 37' 26" 76.208

NOTES : -

- ⊕ DENOTES HANDICAPPED PARKING STALL
- P24 DENOTES NUMBERED PARKING STALL
- PARKING STALLS P1 TO P51 INCLUSIVE ARE ALL L.C.P. FOR STRATA LOTS 1, 2, 77 AND 78

MATCH LINE

LANDSCAPED AREA
L.C.P. S.L.'S 1, 2, 77 AND 78

90° 16' 38" 87.487

HASTINGS STREET

FILE 87-2227.S

19 AUGUST 1992 B.C.S.

Robert C. ...

LOT	SHEET	FORM 1		FORM 2		FORM 3	
		SCHEDULE OF UNIT ENTITLEMENT	UNIT ENTITLEMENT	SCHEDULE OF INTEREST UPON DESTRUCTION	INTEREST UPON DESTRUCTION	SCHEDULE OF VOTING RIGHTS	NUMBER OF VOTES
1	9, 20, 21		4, 400		8, 674		5
2	9, 20, 21		7, 159		12, 375		7
3	10, 20, 21		1, 069		1, 770		1
4	10, 20, 21		750		1, 400		1
5	10, 20, 21		1, 044		1, 765		1
6	10, 20, 21		917		1, 600		1
7	10, 20, 21		908		1, 600		1
8	10, 20, 21		972		1, 680		1
9	10, 20, 21		1, 044		1, 840		1
10	10, 20, 21		995		1, 660		1
11	10, 20, 21		756		1, 340		1
12	10, 20, 21		769		1, 360		1
13	10, 20, 21		807		1, 420		1
14	10, 20, 21		962		1, 540		1
15	11, 20, 21		1, 069		1, 790		1
16	11, 20, 21		750		1, 420		1
17	11, 20, 21		1, 044		1, 830		1
18	11, 20, 21		917		1, 600		1
19	11, 20, 21		908		1, 600		1
20	11, 20, 21		973		1, 680		1
21	11, 20, 21		1, 044		1, 830		1
22	11, 20, 21		995		1, 660		1
23	11, 20, 21		756		1, 360		1
24	11, 20, 21		769		1, 380		1
25	11, 20, 21		807		1, 440		1
26	11, 20, 21		962		1, 600		1
27	12, 20, 21		1, 069		1, 830		1
28	12, 20, 21		750		1, 440		1
29	12, 20, 21		1, 044		1, 890		1
30	12, 20, 21		917		1, 640		1
31	12, 20, 21		908		1, 660		1
32	12, 20, 21		973		1, 740		1
33	12, 20, 21		1, 044		1, 880		1
34	12, 20, 21		995		1, 720		1
35	12, 20, 21		756		1, 380		1
36	12, 20, 21		769		1, 400		1
37	12, 20, 21		807		1, 460		1
38	12, 20, 21		962		1, 660		1
39	13, 20, 21		1, 069		1, 860		1
40	13, 20, 21		750		1, 480		1
41	13, 20, 21		1, 031		1, 940		1

STRATA PLAN LMS 535

LOT	SHEET	FORM 1		FORM 2		FORM 3	
		SCHEDULE OF UNIT ENTITLEMENT	UNIT ENTITLEMENT	SCHEDULE OF INTEREST UPON DESTRUCTION	INTEREST UPON DESTRUCTION	SCHEDULE OF VOTING RIGHTS	NUMBER OF VOTES
42	13, 20, 21		917		1, 670		1
43	13, 20, 21		908		1, 700		1
44	13, 20, 21		1, 184		2, 340		1
45	13, 20, 21		1, 107		2, 130		1
46	13, 20, 21		769		1, 420		1
47	13, 20, 21		807		1, 480		1
48	13, 20, 21		962		1, 720		1
49	14, 20, 21		854		1, 710		1
50	14, 20, 21		750		1, 510		1
51	14, 20, 21		1, 031		2, 000		1
52	14, 20, 21		917		1, 720		1
53	14, 20, 21		908		1, 740		1
54	14, 20, 21		963		2, 000		1
55	14, 20, 21		946		1, 950		1
56	14, 20, 21		769		1, 440		1
57	14, 20, 21		807		1, 500		1
58	14, 20, 21		959		1, 750		1
59	15, 20, 21		1, 026		2, 310		1
60	15, 20, 21		1, 031		2, 090		1
61	15, 20, 21		917		1, 750		1
62	15, 20, 21		908		1, 770		1
63	15, 20, 21		1, 068		2, 290		1
64	15, 20, 21		1, 028		2, 230		1
65	15, 20, 21		807		1, 570		1
66	15, 20, 21		1, 001		1, 950		1
67	16, 20, 21		954		2, 290		1
68	16, 20, 21		1, 031		2, 280		1
69	16, 20, 21		917		1, 880		1
70	16, 20, 21		1, 220		2, 770		1
71	16, 20, 21		940		2, 080		1
72	16, 20, 21		807		1, 660		1
73	16, 20, 21		994		2, 040		1
74	17, 20, 21		1, 244		3, 400		1
75	17, 20, 21		1, 173		3, 000		1
76	17, 20, 21		1, 341		3, 200		1
77	18, 20, 21		10, 247		29, 060		10
78	19, 20, 21		6, 834		17, 248		7
AGGREGATE			98, 436		200, 842		103

CERTIFICATE UNDER SECTION 8(1)

I, ROBERT G. FLYNN OF LADNER B.C., A BRITISH COLUMBIA LAND SURVEYOR, HEREBY CERTIFY THAT THE BUILDING SHOWN IN THIS STRATA PLAN HAS NOT, AS OF THE 19TH DAY OF AUGUST, 1992, BEEN PREVIOUSLY OCCUPIED.

DATED AT VANCOUVER, B.C. THIS 19TH DAY OF AUGUST, 1992.

Robert G. Flynn B.C.L.S.

ACCEPTED AS TO FORMS 1, 2 AND 3

THIS 3 DAY OF September 1992

[Signature] SUPERINTENDENT OF REAL ESTATE

STATUTORY DECLARATION

I, THE UNDERSIGNED DO SOLEMNLY DECLARE THAT

(1) I, THE UNDERSIGNED AM THE DULY AUTHORIZED AGENT OF THE OWNER - DEVELOPER

(2) THE STRATA PLAN IS FOR RESIDENTIAL AND FOR NON - RESIDENTIAL USE

I MAKE THIS SOLEMN DECLARATION CONSCIENTIOUSLY BELIEVING IT TO BE TRUE AND KNOWING THAT IT IS OF THE SAME FORCE AND EFFECT AS IF MADE UNDER OATH.

J. H. Wolfe
AGENT FOR OWNER - DEVELOPER
ISIDOR WOLFE

DECLARED BEFORE ME AT VANCOUVER, IN THE PROVINCE OF BRITISH COLUMBIA, THIS 31 DAY OF August 1992

[Signature]
A COMMISSIONER FOR THE TAKING OF AFFIDAVITS IN AND FOR THE PROVINCE OF BRITISH COLUMBIA
DOUGLAS L. LEWIS

OWNERS: -

F. E. MCCrackEN LTD.
(INCORPORATION NO. 22452)

Frank McCracken
AUTHORIZED SIGNATORY Frank McCracken

Yvonne McCracken
AUTHORIZED SIGNATORY Yvonne McCracken
WITNESS AS TO BOTH SIGNATURES

J. H. Wolfe
WITNESS
ISIDOR WOLFE
3100 - 650 W. GEORGIA ST
VANCOUVER BC
ADDRESS OF WITNESS

SOLICITOR
OCCUPATION OF WITNESS

CHARGEHOLDERS: -

THE BANK OF NOVA SCOTIA
BY ITS DULY APPOINTED ATTORNEY

[Signature]
AUTHORIZED SIGNATORY
COLIN DAVID LAIGHT
VICE PRESIDENT, CREDIT
DF 9039041 C/E 90092627
AUTHORIZED SIGNATORY
WITNESS AS TO BOTH SIGNATURES

B.N.S. Document
No. 2471
Approved
Registration

Bronyn Mary Polder
WITNESS
BRONYN MARY POLDER
650 W. GEORGIA ST.
VANCOUVER B.C.
ADDRESS OF WITNESS

Secretary
OCCUPATION OF WITNESS

SHEET 7 OF 23 SHEETS

STRATA PLAN LMS 535

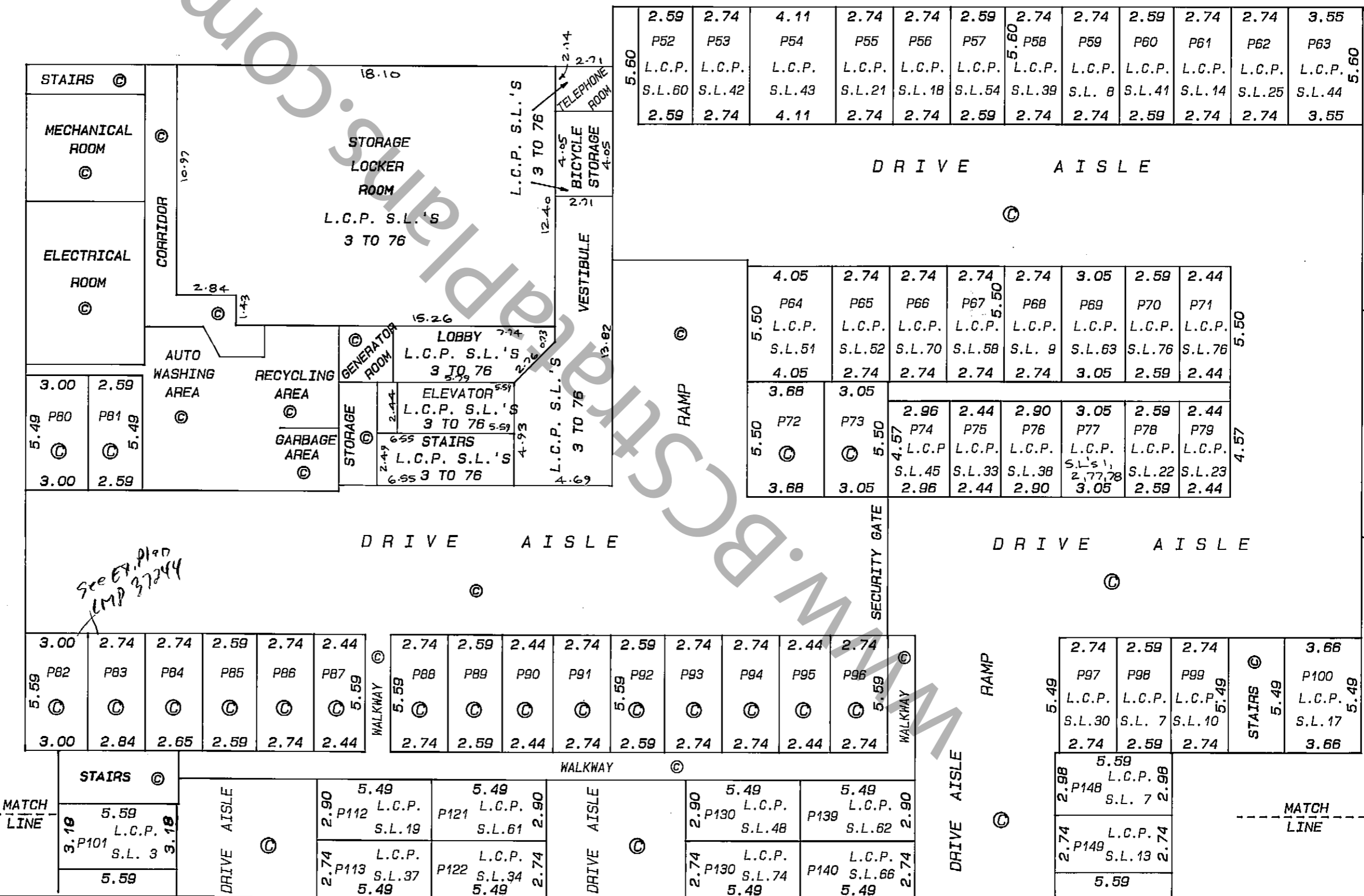
NOTE:

P52 DENOTES NUMBERED PARKING STALL

FLOOR PLANS
PARKING LEVEL

Scale 1 : 200

All distances are in metres



See Ex. Plan
CMP 37244

19 AUGUST 1998 B.C.L.T.B.

FILE: 87-2227.57A

SHEET 8 OF 23 SHEETS

FLOOR PLANS
PARKING LEVEL

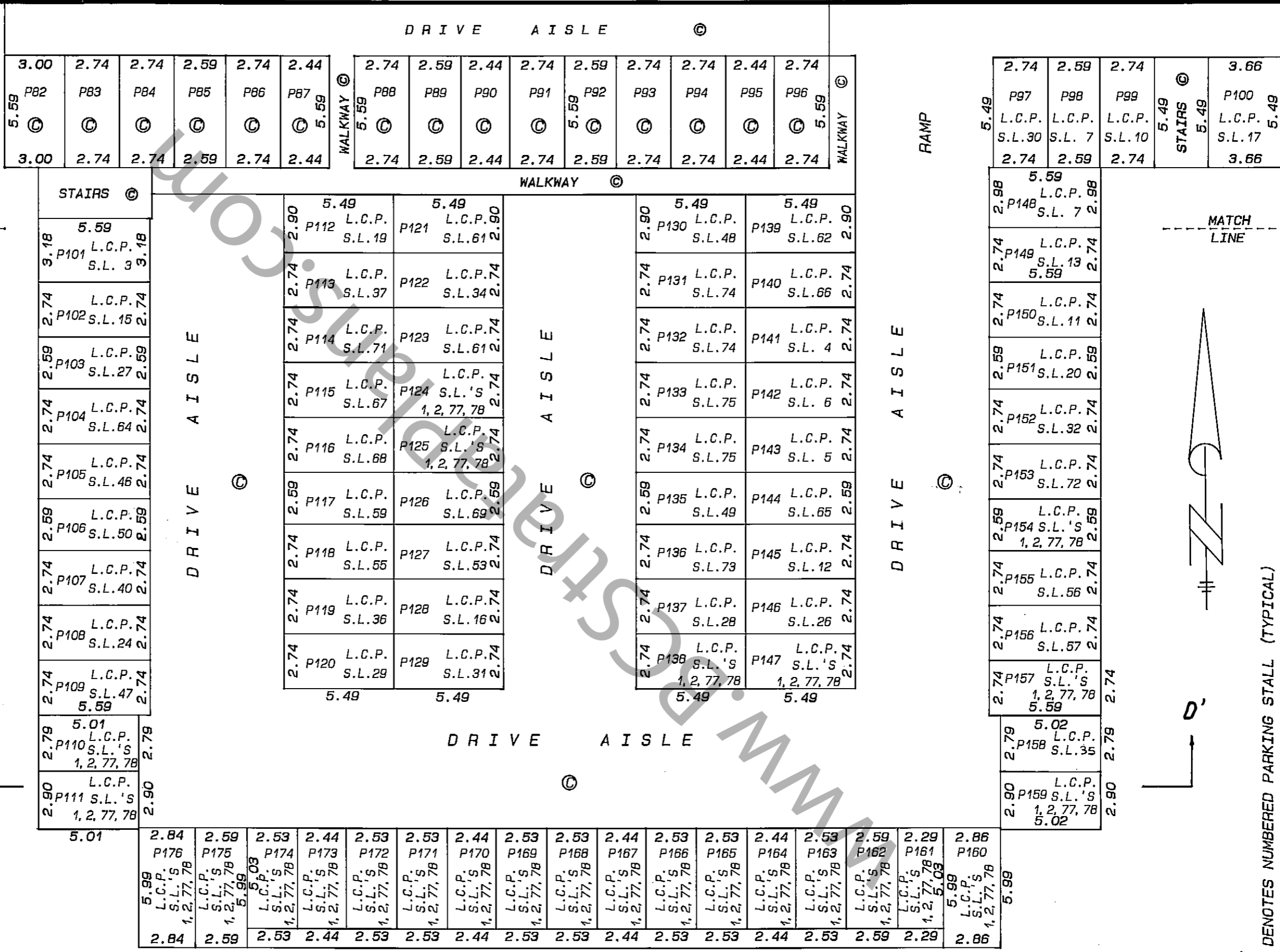
STRATA PLAN LMS 535

Scale 1 : 200

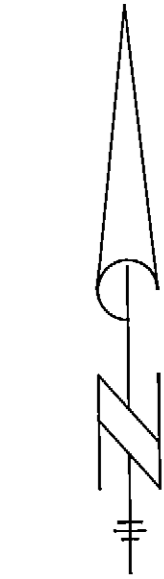
ALL distances are in metres



MATCH LINE



MATCH LINE



NOTE:

P101 DENOTES NUMBERED PARKING STALL (TYPICAL)

FILE 87-2227.S

19 AUGUST 1992 C.L.S.

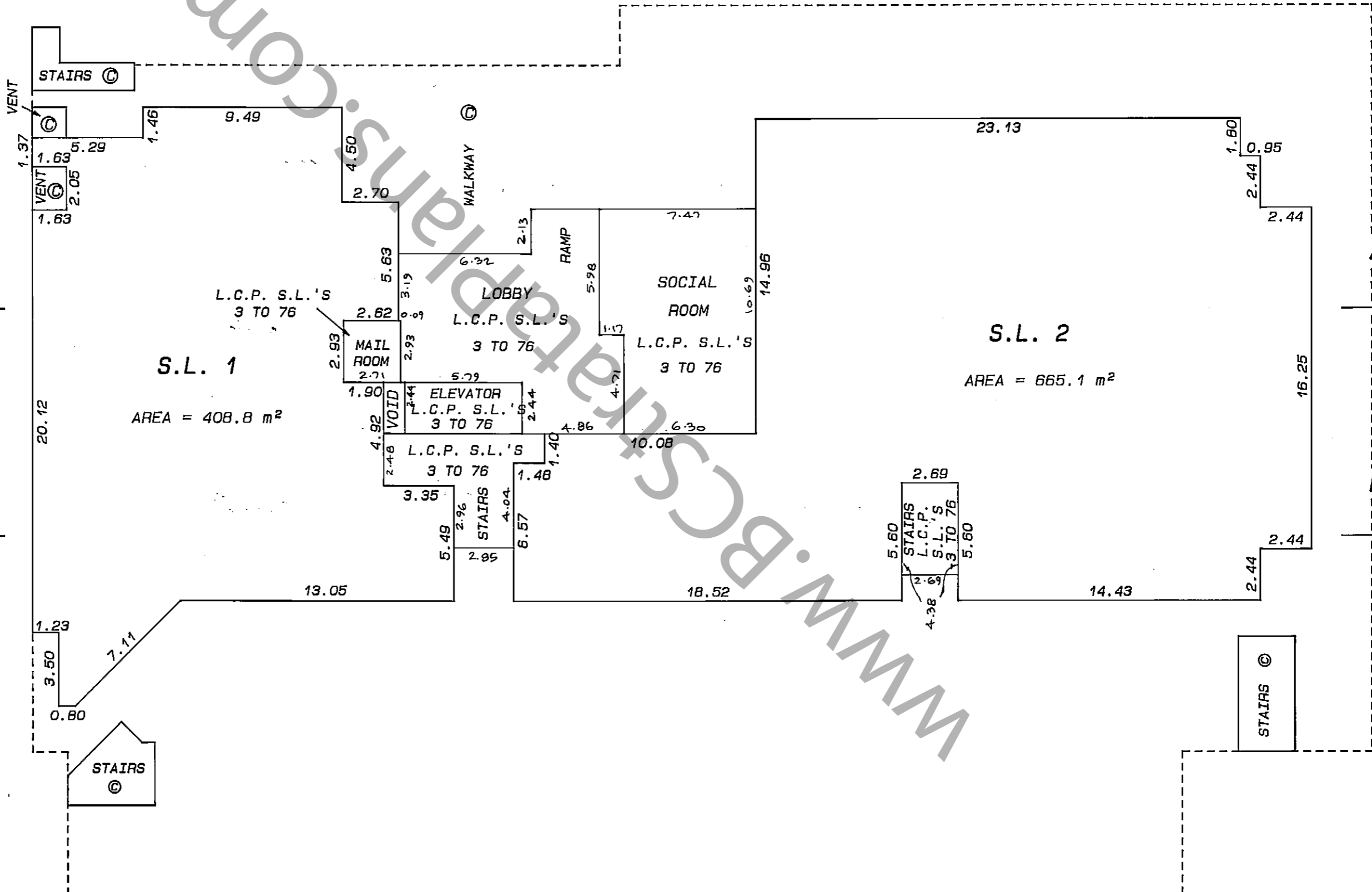
SHEET 9 OF 23 SHEETS

STRATA PLAN LMS 535

BUILDING "A"
GROUND FLOOR

Scale 1 : 200

All distances are in metres



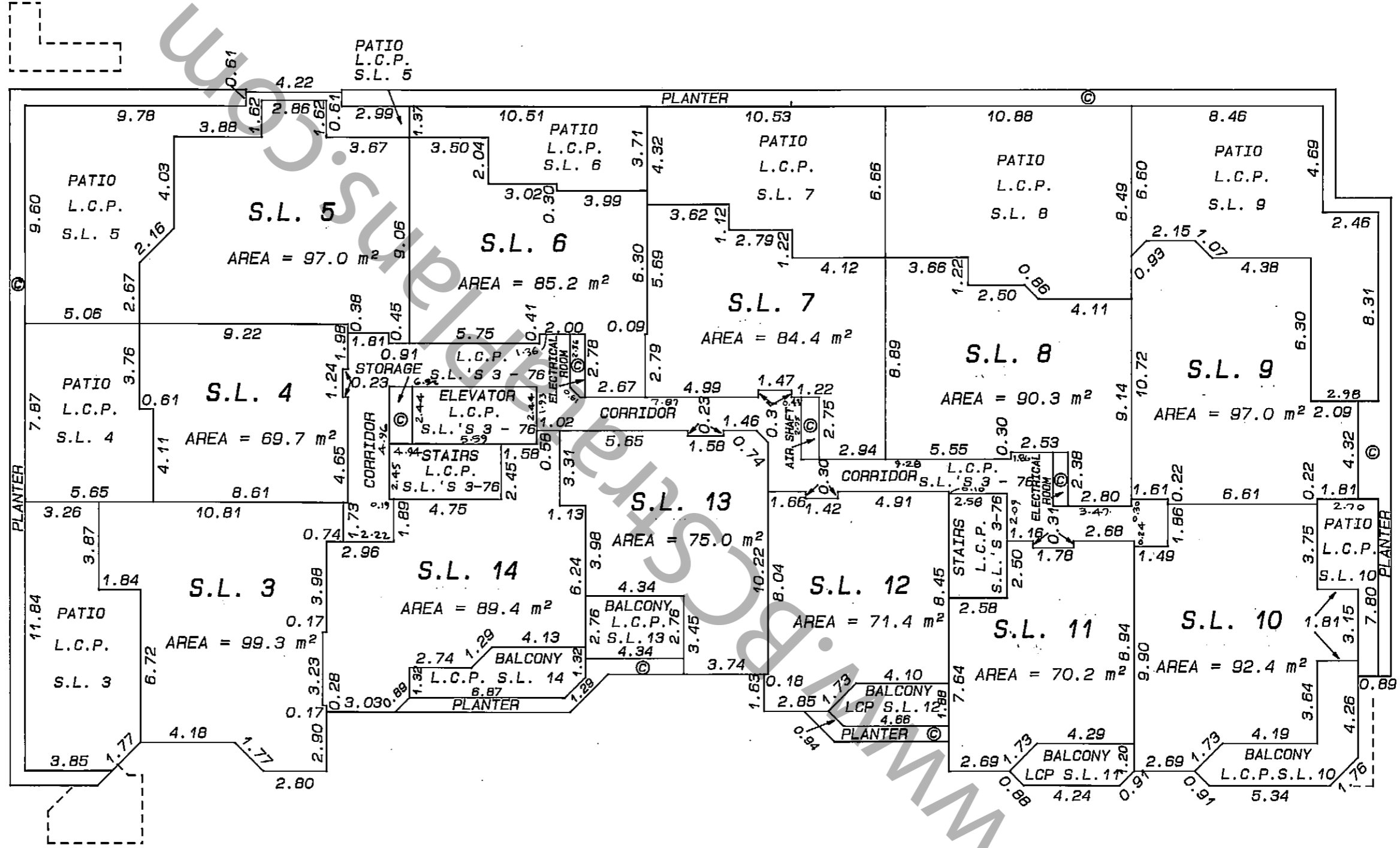
SHEET 10 OF 23 SHEETS

STRATA PLAN LMS 535

BUILDING "A"
SECOND FLOOR

Scale 1 : 200

All distances are in metres



SHEET 11 OF 23 SHEETS

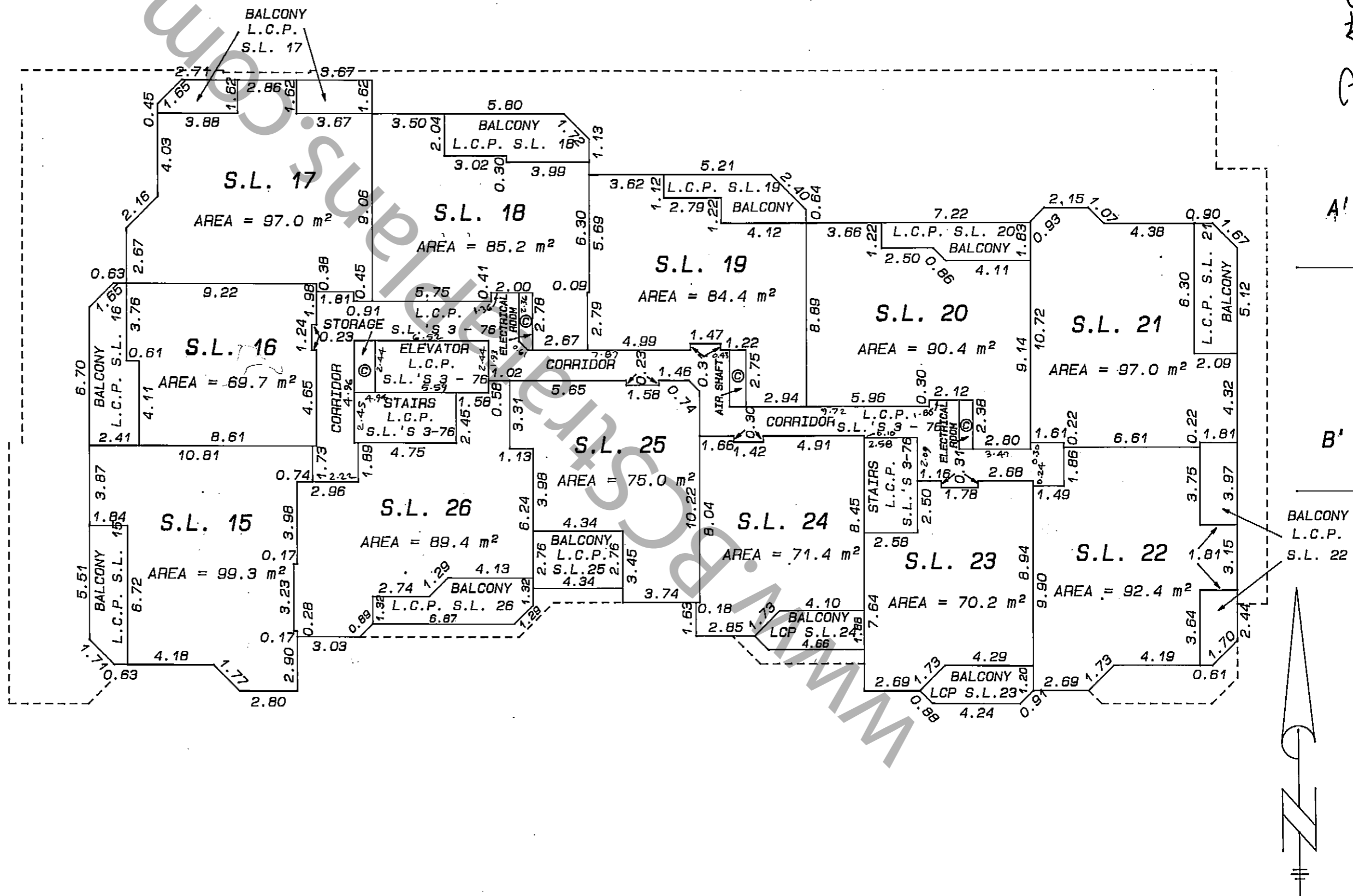
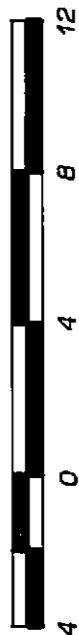
STRATA PLAN LMS 535

BUILDING "A"

THIRD FLOOR

Scale 1 : 200

All distances are in metres



19 AUGUST 1992 B.C.E.S.

FILE 07-2227.S

SHEET 12 OF 23 SHEETS

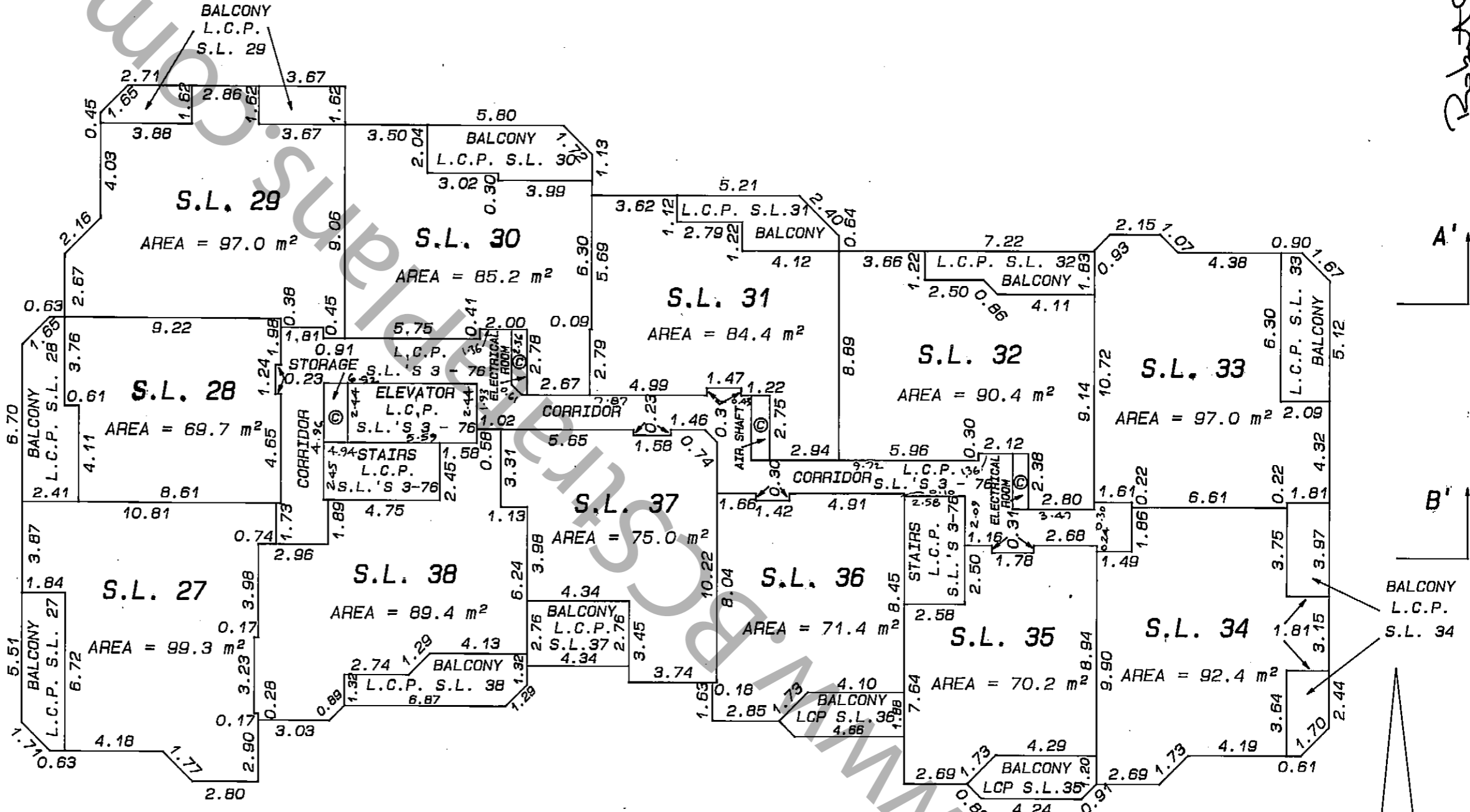
BUILDING "A"

FOURTH FLOOR

STRATA PLAN LMS 434

Scale 1 : 200

All distances are in metres



Robert C. [Signature]
19 AUGUST 1992 B.C.L.S.

FILE 87-2227.S

SHEET 13 OF 23 SHEETS

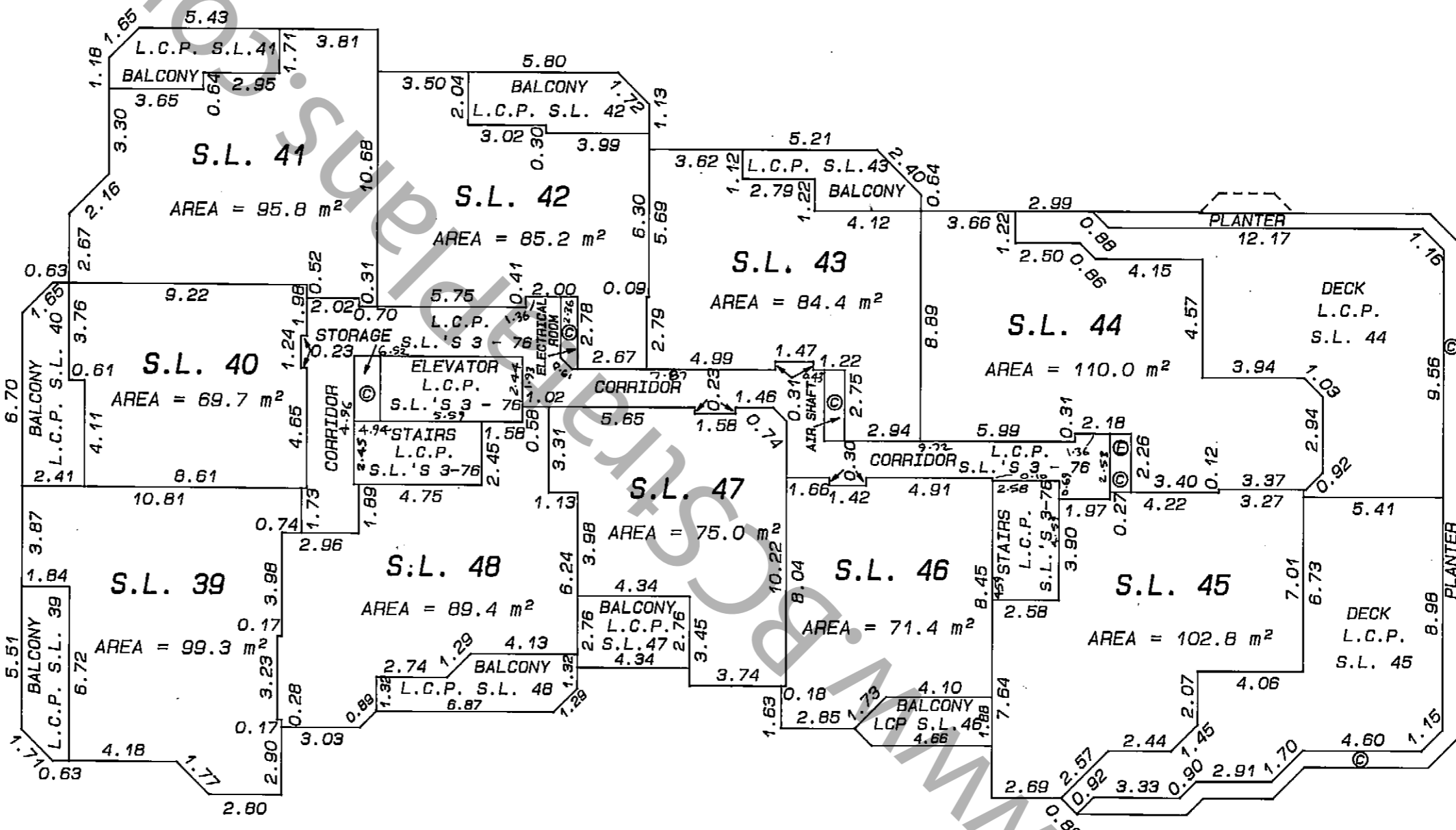
BUILDING "A"

FIFTH FLOOR

STRATA PLAN LMS 435

Scale 1 : 200

All distances are in metres



FILE 07-2227.S

19 AUGUST 1992 B.C.L.S.

Handwritten signature

SHEET 14 OF 23 SHEETS

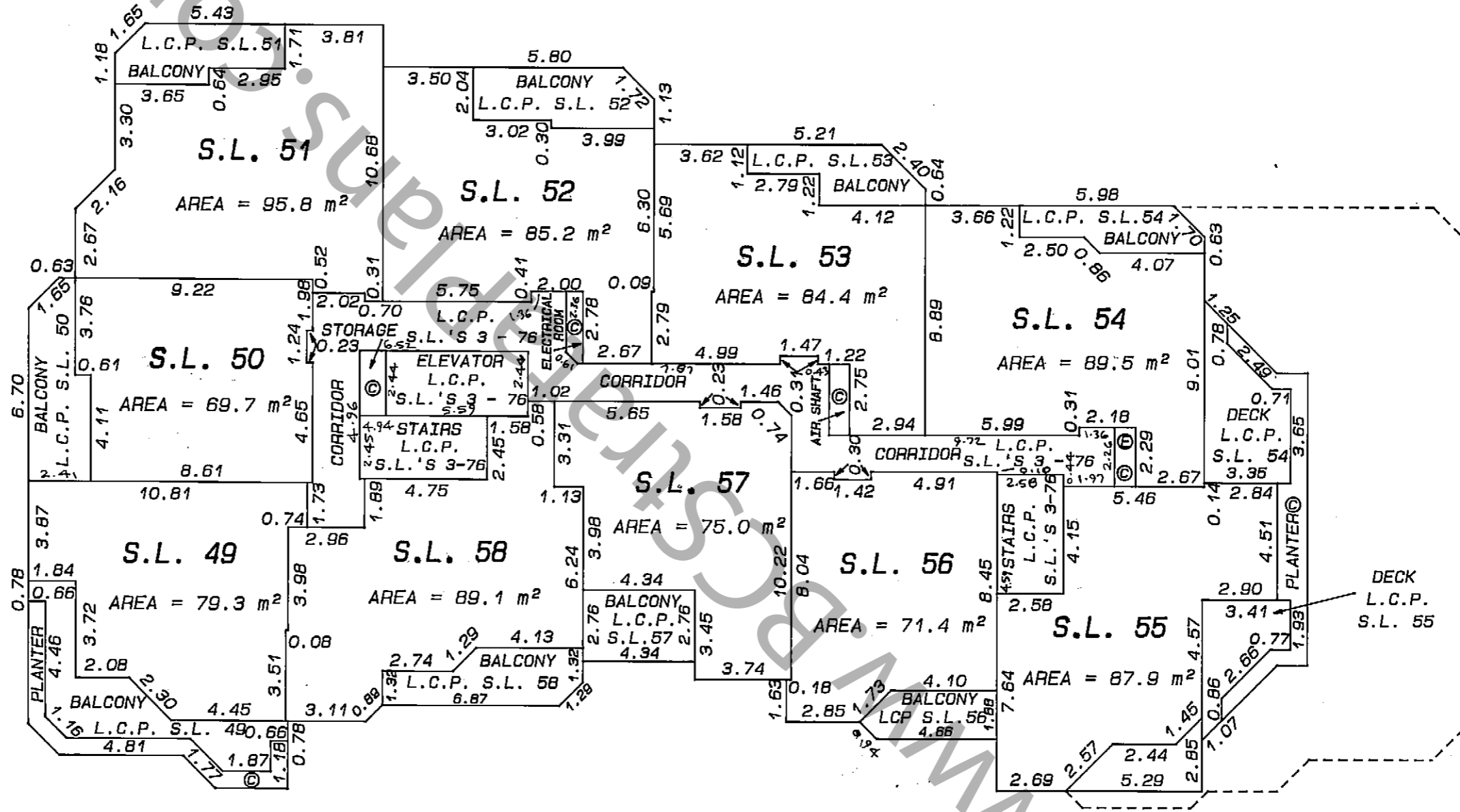
BUILDING "A"

SIXTH FLOOR

STRATA PLAN LMS 535

Scale 1 : 200

All distances are in metres



FILE 07-2227.S

19 AUGUST 1992 B.C.L.S.

SHEET 15 OF 23 SHEETS

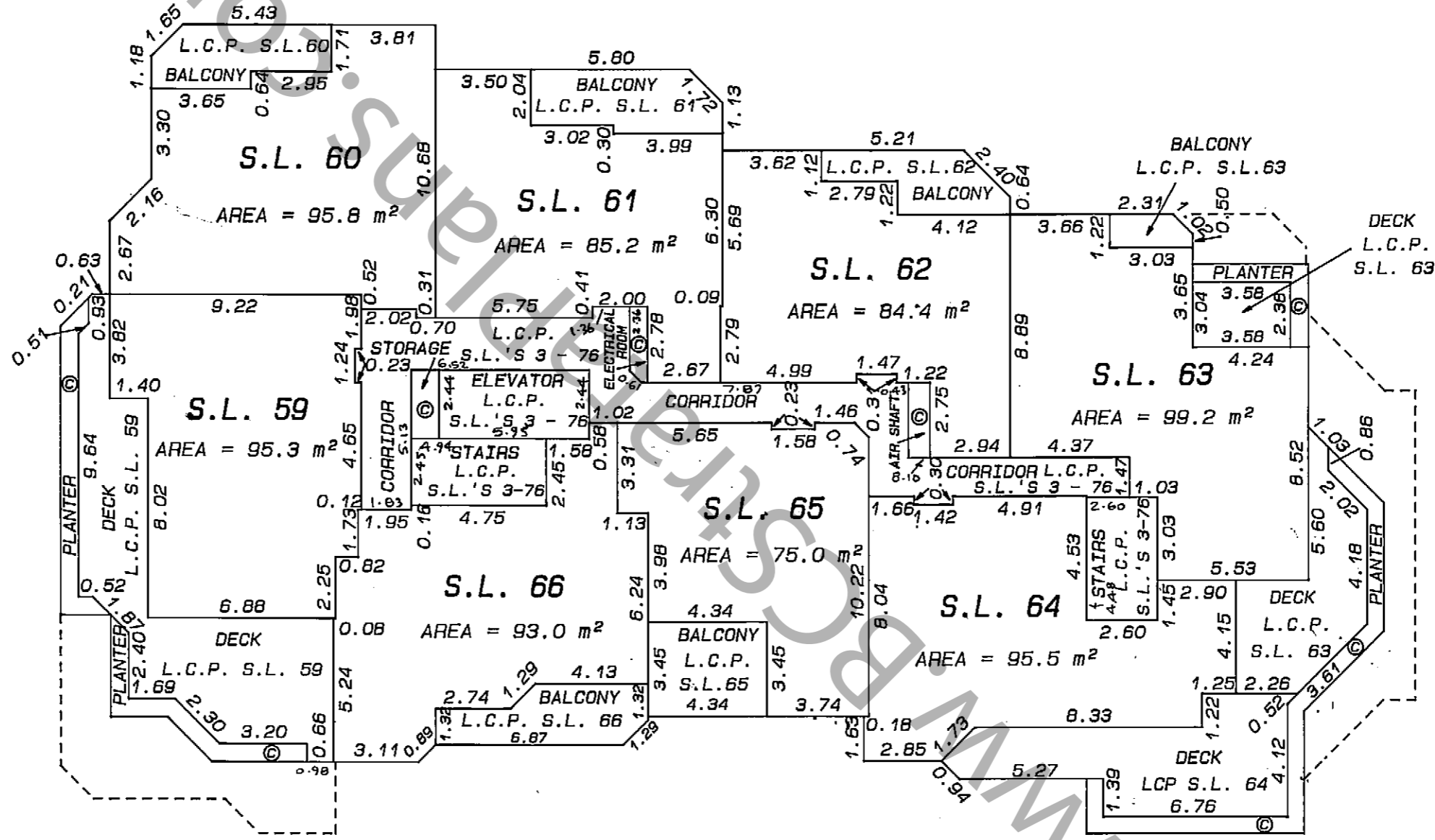
STRATA PLAN LMS 434

BUILDING "A"

SEVENTH FLOOR

Scale 1 : 200

All distances are in metres



19 AUGUST 1992 B.C.L.S.

FILE 67-2227.S

SHEET 16 OF 23 SHEETS

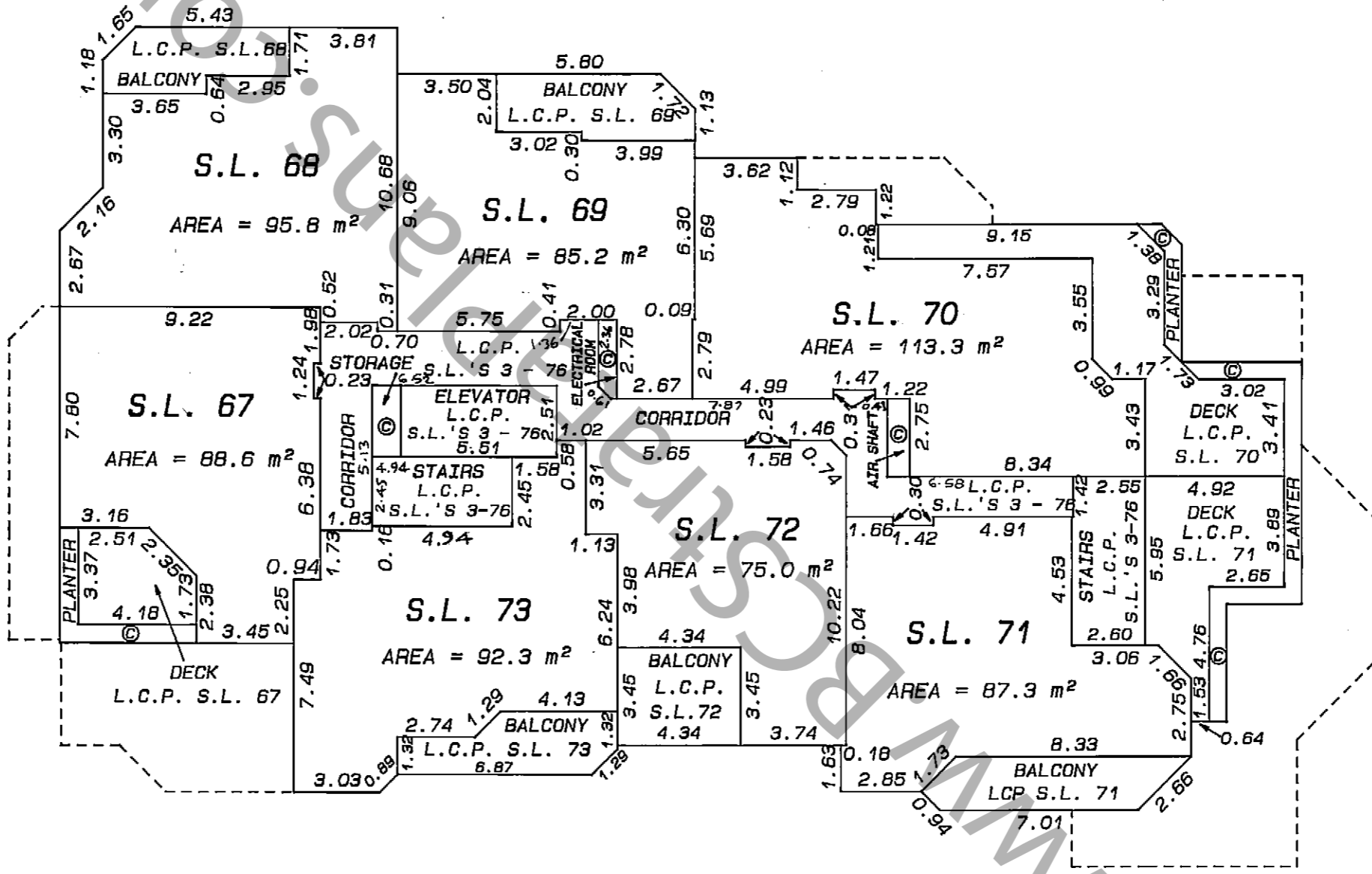
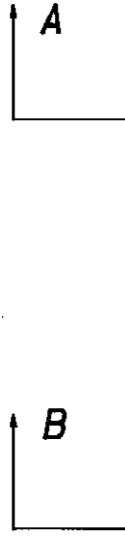
BUILDING "A"

EIGHTH FLOOR

STRATA PLAN LMS 535

Scale 1 : 200

All distances are in metres



19 AUGUST 1992 B.C.L.S.

FILE 07-2227.S

SHEET 17 OF 23 SHEETS

BUILDING "A"

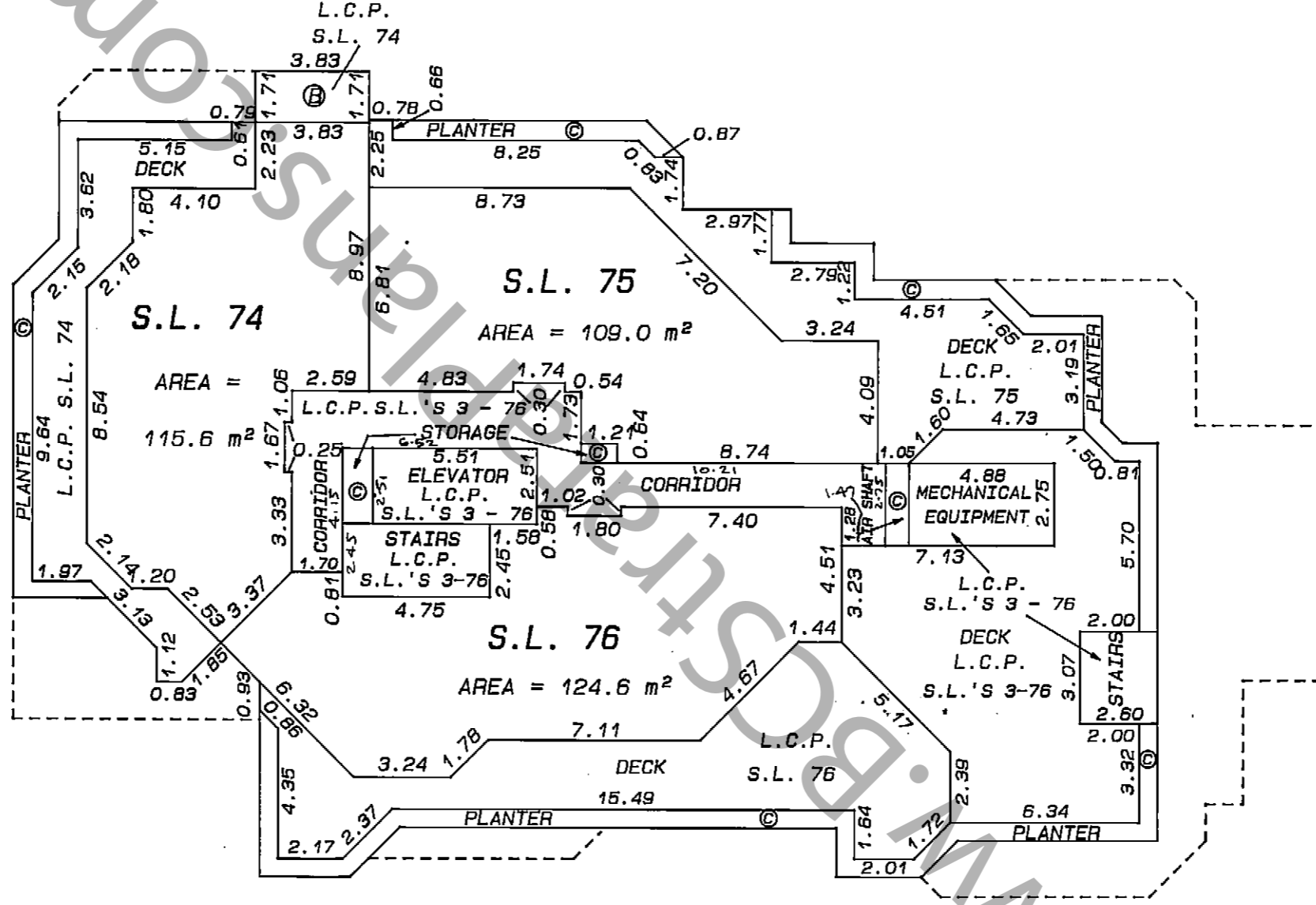
NINTH FLOOR

Scale 1 : 200

All distances are in metres



STRATA PLAN LMS 535



B'

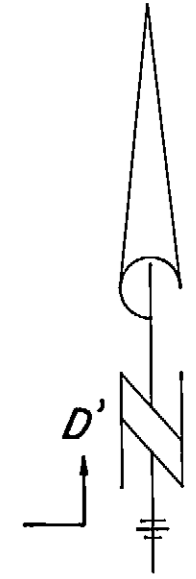
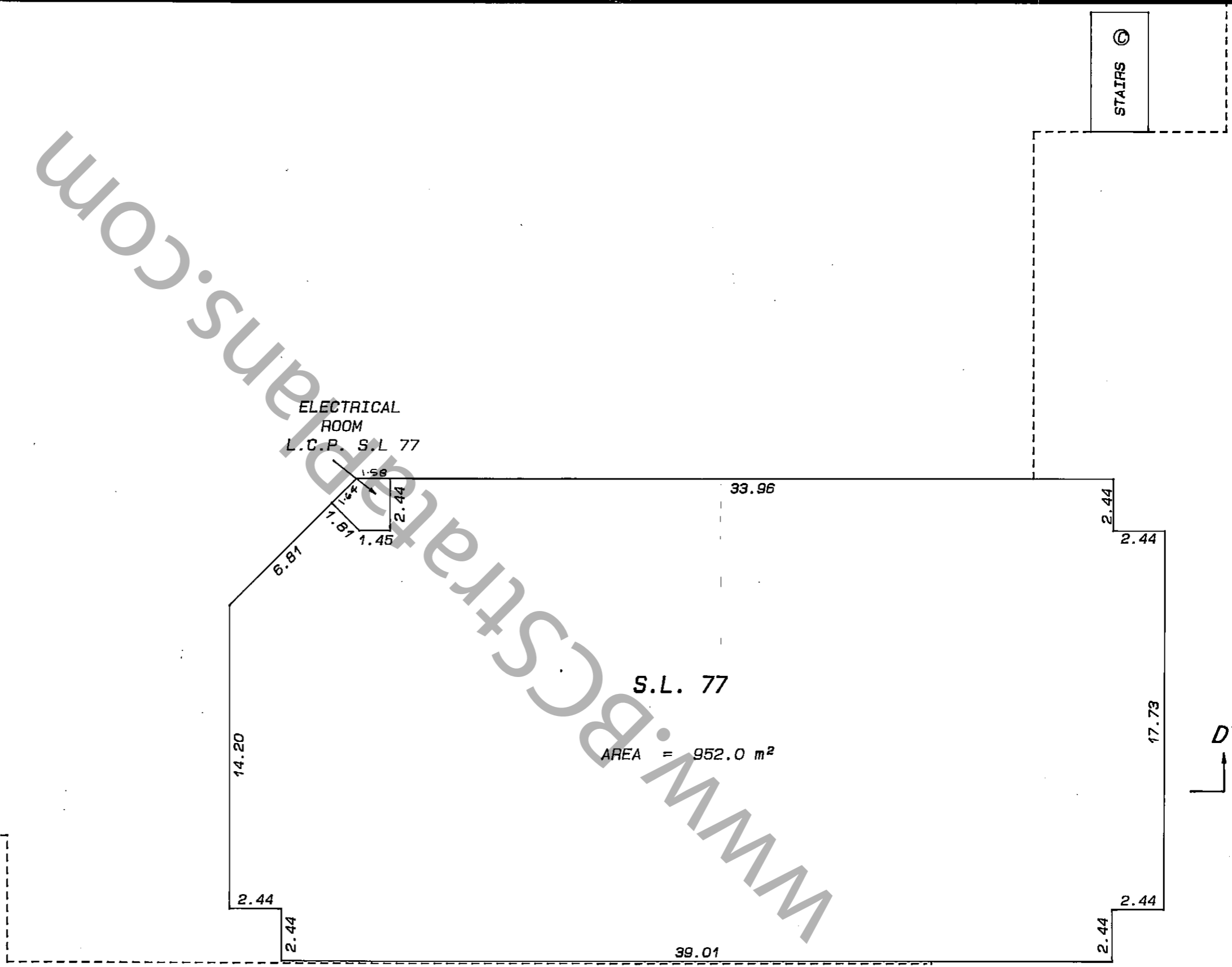
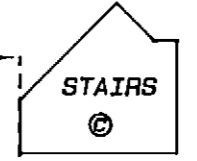
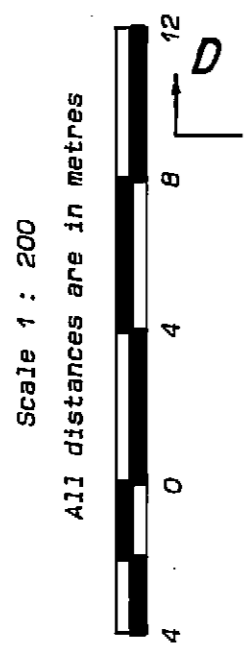
A'

Robert Carr

SHEET 18 OF 23 SHEETS

**BUILDING "B"
GROUND FLOOR**

STRATA PLAN LMS 535



B. J. ...
19 AUGUST 1992 B.C.L.S.

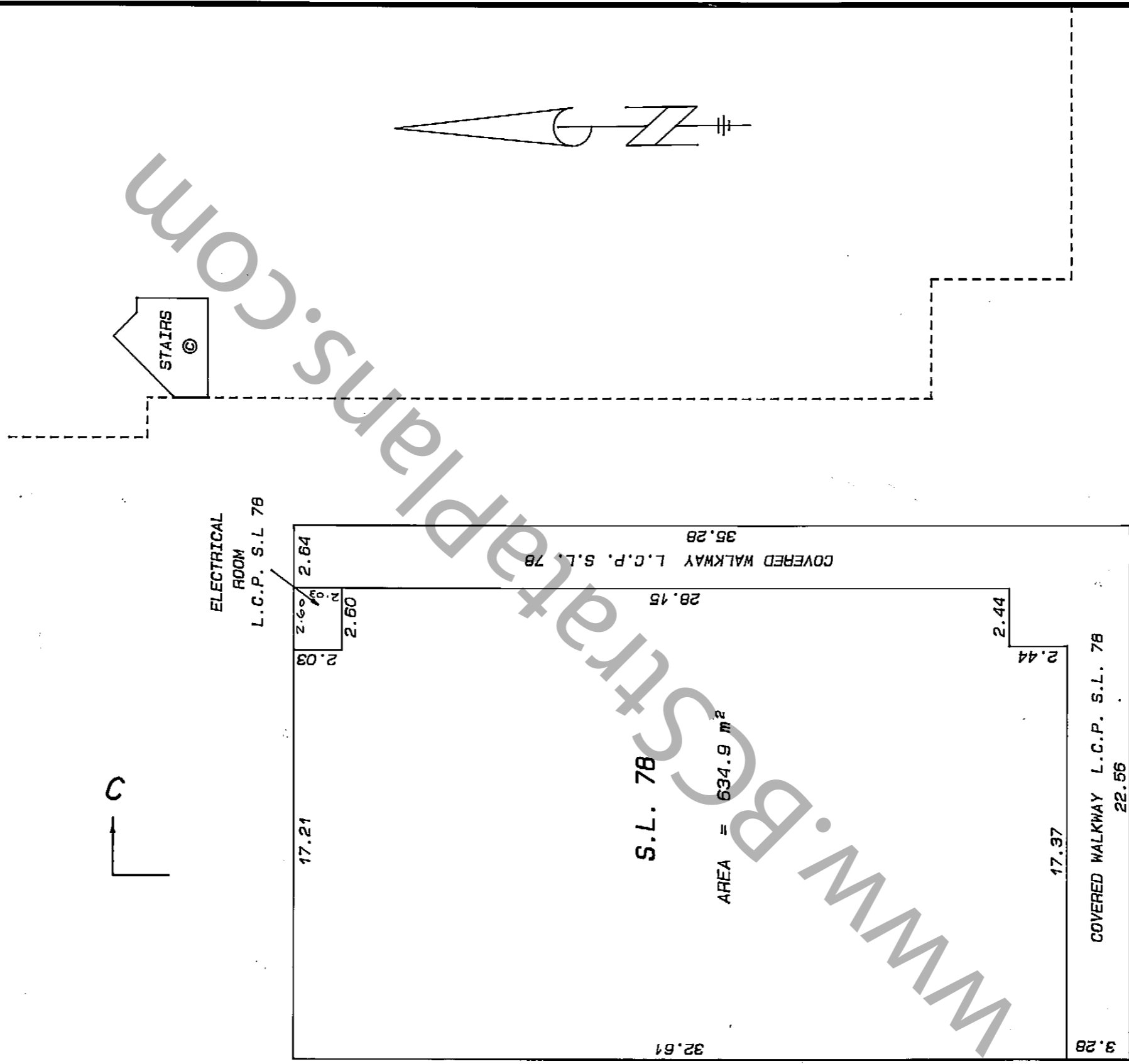
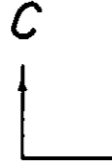
FILE 87-2227.S

BUILDING "C"
GROUND FLOOR

STRATA PLAN LMS 435

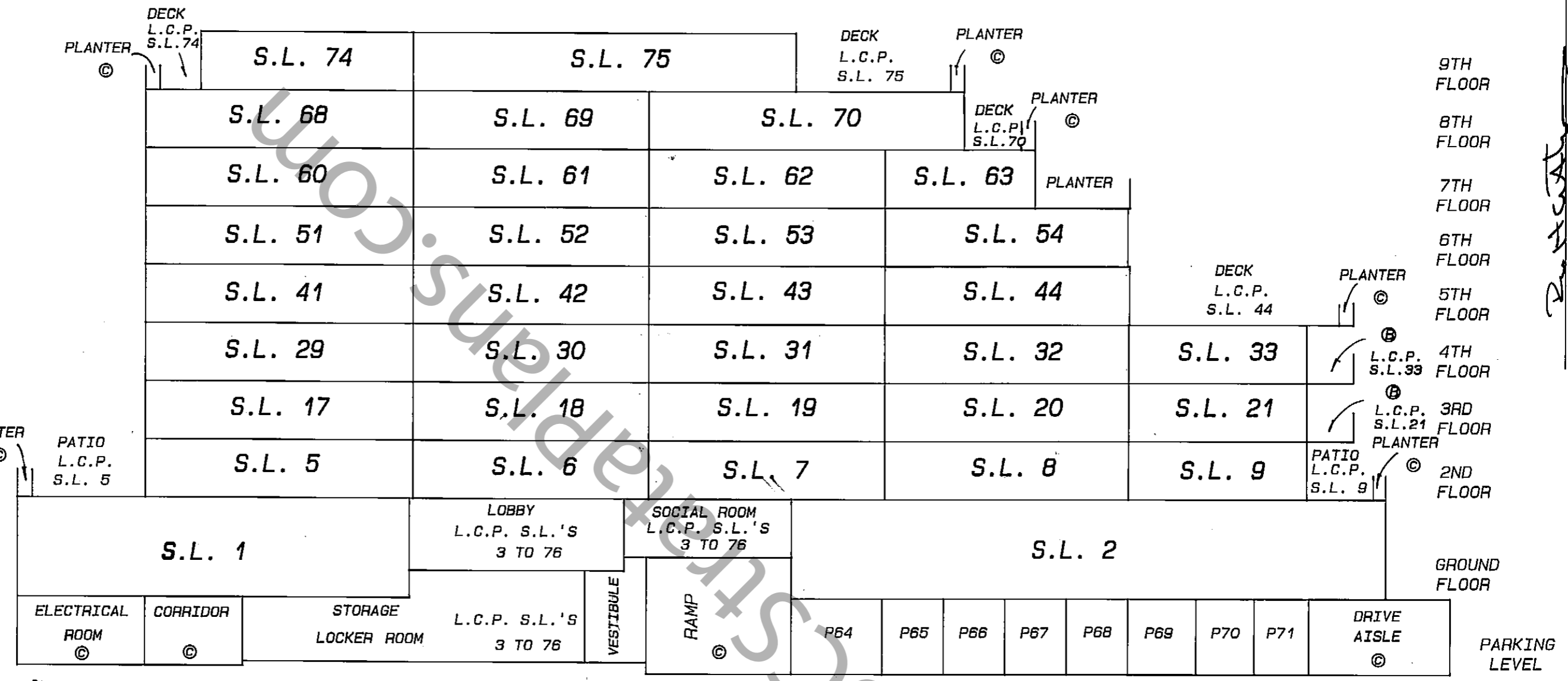
Scale 1 : 200

All distances are in metres



SHEET 20 OF 23 SHEETS

STRATA PLAN LMS 935



BUILDING "A"
CROSS SECTION

Scale 1 : 200
All distances are in metres



SECTION A-A'

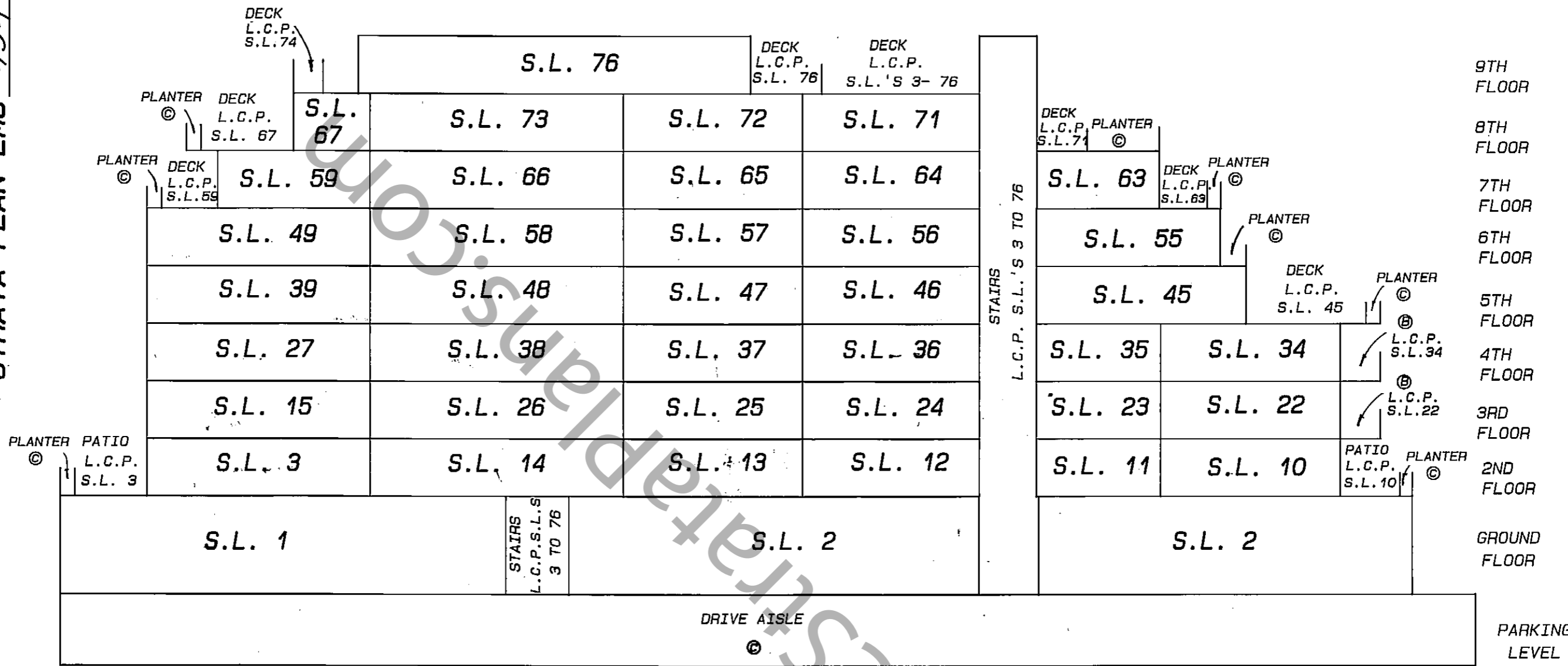
NOTE:

P52 DENOTES NUMBERED PARKING STALL

19 AUGUST 1992 B.C.L.S.
FILE: 87-2227.520

SHEET 21 OF 23 SHEETS

STRATA PLAN LMS 535



BUILDING "A"
CROSS SECTION

Scale 1 : 200
All distances are in metres



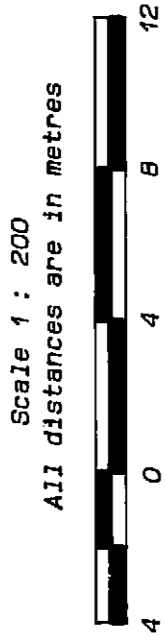
SECTION B-B'

19 AUGUST 1992 B.C.L.S.

**BUILDING "B" AND "C"
CROSS SECTIONS**

SHEET 21a OF 23 SHEETS

STRATA PLAN LMS 434



L.C.P. P111 S.L.'S 1, 2, 77, 78

**BUILDING "B"
SECTION D-D'**

DRIVE AISLE
⊙

S.L. 77

GROUND FLOOR

L.C.P. P159 S.L.'S 1, 2, 77, 78

PARKING LEVEL

**BUILDING "C"
SECTION C-C'**

S.L. 78

COVERED WALKWAY
/ L.C.P. S.L. 78

GROUND FLOOR

WWW.BCCStrataplans.com

