

OUR COMMUNITIES

COMMERCIAL BUILDINGS

CUSTOMER SERVICE

ABOUT US

CONTACT US

SELLING NOW

PAST SUCCESSES

BURNABY

Motif at Citi

Buchanan Towers

Gemini II

Spectrum

The Sonnet

Paramourt

RICHMOND

NEW WESTMINSTER

PORT COQUITLAM

PORT MOODY

SURREY

VANCOUVER ISLAND

WEST VANCOUVER

WHISTLER

Gemini II

Rising Above Your Expectations



OVERVIEW

LOCATION

FEATURES

GALLERY

The second phase of the highly-successful Gemini development. Gemini II rises 23 storeys above the vibrant community of Ridgmont providing the excitement and benefits of urban living at a truly affordable price. Your home at Gemini II will be private, secluded and convenient to every activity. Plus, you'll be mere minutes from the city—the Skytrain is a short walk down a grass-lined path. Gemini II combines the finest materials, products and amenities, with thoughtful floor plans, for an intelligent alternative to expensive downtown living.



OUR COMMUNITIES

COMMERCIAL BUILDINGS

CUSTOMER SERVICE

ABOUT US

CONTACT US

SELLING NOW

PAST SUCCESSES

BURNABY

Motif at Citi

Buchanan Towers

Gemini II

Spectrum

The Sonnet

Paramourt

RICHMOND

NEW WESTMINSTER

PORT COQUITLAM

PORT MOODY

SURREY

VANCOUVER ISLAND

WEST VANCOUVER

WHISTLER

Gemini II

Rising Above Your Expectations



OVERVIEW

LOCATION

FEATURES

GALLERY

- Solid concrete construction
- Larger floor plans and spacious suites
- Breathtaking views of the ocean, city, North Shore, and Mount Baker
- Tiled entrances and French doors
- Designer kitchens and bathrooms
- Full suite of premium appliances
- Spa, sauna, fitness centre and social lounge
- State-of-the-art security





GEMINI

Quality design ... quality execution.

Gemini homes with star quality finishes:

- Two designer colour schemes to choose from
- Wall to wall stain resistant carpet
- Heritage style entry and interior doors
- Mirrored closet doors at entry and in master bedroom
- French doors to dens
- Tiled entry flooring
- Gas fireplace with tile surround and wood mantle
- Wood baseboards
- Vertical blinds
- Large view windows

Full featured kitchens and baths with generous finishing touches:

- Tile flooring in bathrooms and kitchens, plus tiled kitchen backsplash
- Tub and shower surrounds completed in ceramic tile with distinctive accents
- Contemporary side wrap cabinets
- Soaker tub
- Separate shower stall in some suites
- Full appliance package includes:
 - Range and self cleaning oven
 - Exhaust hood-fan

- Auto defrost refrigerator
- Multi-cycle dishwasher
- Garburator
- Stacking washer and dryer

Extra Touches with your comfort and security in mind:

- Elegant entrance lobby
- Exclusive recreation amenities include:
 - Whirlpool spa
 - Sauna
 - Steam Room
 - Fully equipped exercise room
 - Social lounge with kitchen and access to patio and landscaped grounds
- Two high-speed elevators
- Secured, gated underground parking for residents
- Secured storage lockers and bicycle storage
- Video entry-phone system
- Keyless-remote access to building entrances
- In-suite pre-wiring for security system
- Central hot water heating
- Sprinkler system and smoke alarms
- Resident caretaker
- National Home Warranty Program



The Rising Star.

The locals call Ridgemont The New Heart and Soul of Burnaby Plateau...and for good reason. Located in South Burnaby, Ridgemont is the latest community to put down roots in the neighbourhood, and it's already blooming with life. The established cornerstone is the Gibraltar, setting a standard for luxury high-rise living. The master-planned community also boasts a cluster of magnificent, finely crafted townhomes. And now Gemini. Twin towers unparalleled in quality...twenty-one storeys of new high-rise luxury condominium suites from one to three bedrooms.

The Gibraltar
sets the standard for
luxury high-rise living.



B C C O N D O S . N E T





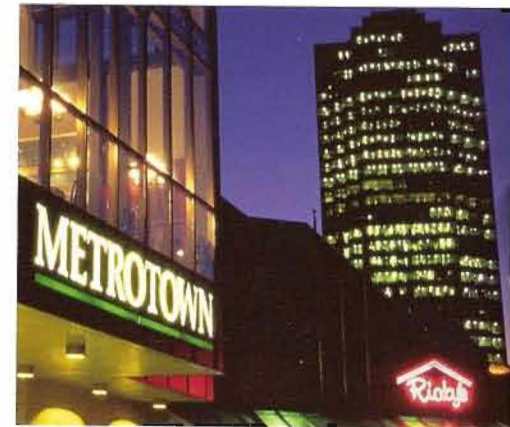
1. THE GIBRALTAR
2. GEMINI ONE
3. GEMINI TWO
4. GIBRALTAR CONCRETE TOWNHOMES
5. GEMINI CONCRETE TOWNHOMES
6. TUDOR GROVE
7. TENNIS COURTS AND NEIGHBOURHOOD PARK
8. HERITAGE SCHOOLHOUSE
9. SAKURA-SO SENIORS' RESIDENCES
10. HEALTH CARE HOME
11. NATIONAL NIKKEI HERITAGE CENTRE
12. NIKKEI GARDEN
13. PEDESTRIAN WALKWAY TO SKYTRAIN STATION

Five Star Location.

The neighbourhood of Ridgemont is perfectly placed in South Burnaby. Only a short walk away is the Edmonds SkyTrain station where you can shoot downtown in just 15 minutes. Travel a short way west along Kingsway and within minutes you'll reach a galaxy of shopping and service attractions at Metrotown, Eaton Centre and Station Square. In fact, there's more than 400 specialty retailers in the vicinity.

The Future Looks Bright.

The entire Ridgemont neighbourhood is taking shape within a blossoming 1.5 acre landscaped private park with heritage trees and walking trails. Ridgemont will have its own community facility in the restored and refurbished heritage building that was once the Old Schoolhouse. And at the East end of Ridgemont, the Nikkei Cultural Centre will be home to both traditional Japanese gardens and a recreational and educational centre for all ages. This is a growing, master-planned community and you can be a part of it.



Homes with Star Quality.

Gemini's appeal begins with quality. Quality design...quality execution. You can sense it as you enter Ridgemont. This is a self-contained, master-planned community with a feeling all its own - from paved streets and walkways to pleasing architecture and a relaxing, park-like environment.

From the outside, Gemini's twin towers exude strength and confidence with their striking concrete construction.

Once inside, the quality and attention to detail is obvious. You'll agree from the moment you enter the tastefully appointed lobby, this is a place you'll be proud to call home...a place friends and family will love to visit.

Inside your suite the care and attention to detail is striking...and so is the view. Floor to ceiling windows take full advantage of city and mountain skylines, and give the comfort of light and space.

In your gourmet kitchen, you can rustle up anything from a holiday turkey dinner to a casual brunch with friends. Ample cupboard space, generous countertops, tiled backsplashes, quality appliances and ceramic tiled floors make entertaining a pleasure.

Your living room features a show-piece gas fireplace, and full view windows with blinds. Just outside is your own private, spacious

balcony, just the place for warm summer breakfasts or perhaps an afternoon barbeque with friends, all the while enjoying the panoramic landscape.

Your master bedroom shares the same scenic views. Head to the luxurious ensuite where an oversize soaker tub awaits you. The pleasing colour scheme complements designer fittings and decorative Italian tiles.



BCCONDOS.NET





GEMINI

Two Bright Stars on the Horizon

THE GEMINI TOWERS • AT RIDGEMONT



Presentation Centre located on Southoaks Crescent, just off Kingsway and Spurling, Burnaby, B.C. Phone: (604)515-7790



BOSA DEVELOPMENT CORPORATION SUITE 201 - 3701 EAST HASTINGS STREET
BURNABY, BRITISH COLUMBIA V5C 2H6 TELEPHONE: (604)294-0666 FAX: (604)291-9120

IN THE INTEREST OF CONTINUING IMPROVEMENT, THE BUILDER RESERVES THE RIGHT TO CHANGE FEATURES AND SPECIFICATIONS WITHOUT NOTICE. ACTUAL DIMENSIONS AND FLOOR PLANS MAY VARY SLIGHTLY.

PRINTED IN CANADA. DESIGN BY MAX. ADVERTISING INC.



BCCONDOS.NET



OUR COMMUNITIES

COMMERCIAL BUILDINGS

CUSTOMER SERVICE

ABOUT US

CONTACT US

SELLING NOW

PAST SUCCESSES

BURNABY

Motif at Citi

Buchanan Towers

Gemini II

Spectrum

The Sonnet

Paramourt

RICHMOND

NEW WESTMINSTER

PORT COQUITLAM

PORT MOODY

SURREY

VANCOUVER ISLAND

WEST VANCOUVER

WHISTLER

Gemini II

Rising Above Your Expectations

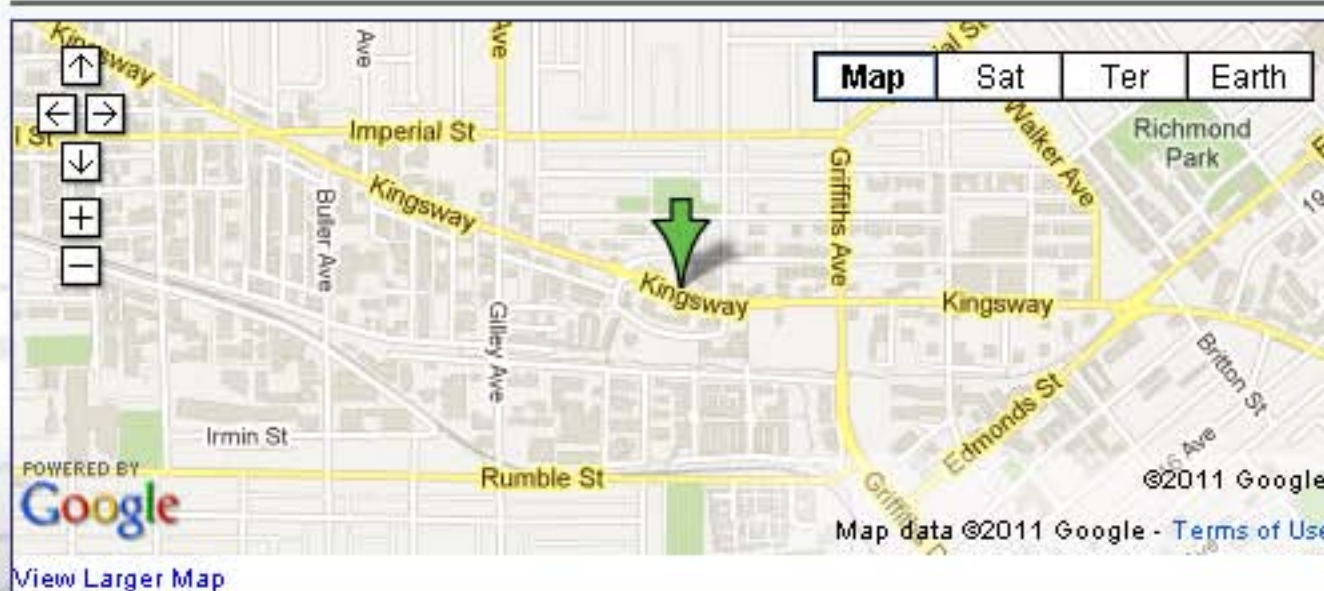


OVERVIEW

LOCATION

FEATURES

GALLERY



Gemini II is located in Ridgemont, a vibrant new master-planned community of colourful treescapes, beautiful landscaped gardens, and private parklands. The neighbourhood features every urban amenity while maintaining a sense of privacy and nature. Rapid transit and the Metrotown shopping/entertainment complex are nearby, as are bicycle and walking paths.





- 1 The Gibraltar at Ridgemont
- 2 Tower Two by Bosa Development
- 3 Tower Three by Bosa Development
- 4 Townhomes by Bosa Development
- 5 Townhomes
- 6 Tennis Courts & Neighbourhood Park

- 7 Refurbished Heritage Schoolhouse
- 8 Sakara-So Seniors' Residences
- 9 Health Care Home
- 10 National Nikkei Heritage Centre
- 11 Nikkei Garden

- A SkyTrain Route ▶
- B Pedestrian Walkway to SkyTrain ▶
- C Ridgemont Neighbourhood ▶
- D Bonsor Recreation Centre ▶
- E Central Park ▶



BCCONDOS.NET



Centre ▶