

T H E L I D O



R E N A I S S A N C E

AT WESTMINSTER QUAY II

BY ANDRE MOLNAR



B C C O N D O S . N E T



Here the Renaissance begins.

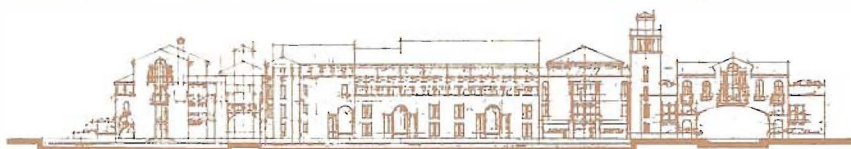
Andre Molnar is proud to present The Lido – phase one of the celebrated Renaissance development at Westminster Quay.

Laying the foundations for further growth, this 148-unit



Artist Conception

living. And each has a priceless water view. Some suites face the panoramic Fraser River. Others overlook the more intimate and ordered man-made canals and lagoons that are a signature of the Renaissance development.



Venetian style complex beautifully exemplifies the Molnar reputation of combining quality with affordability.

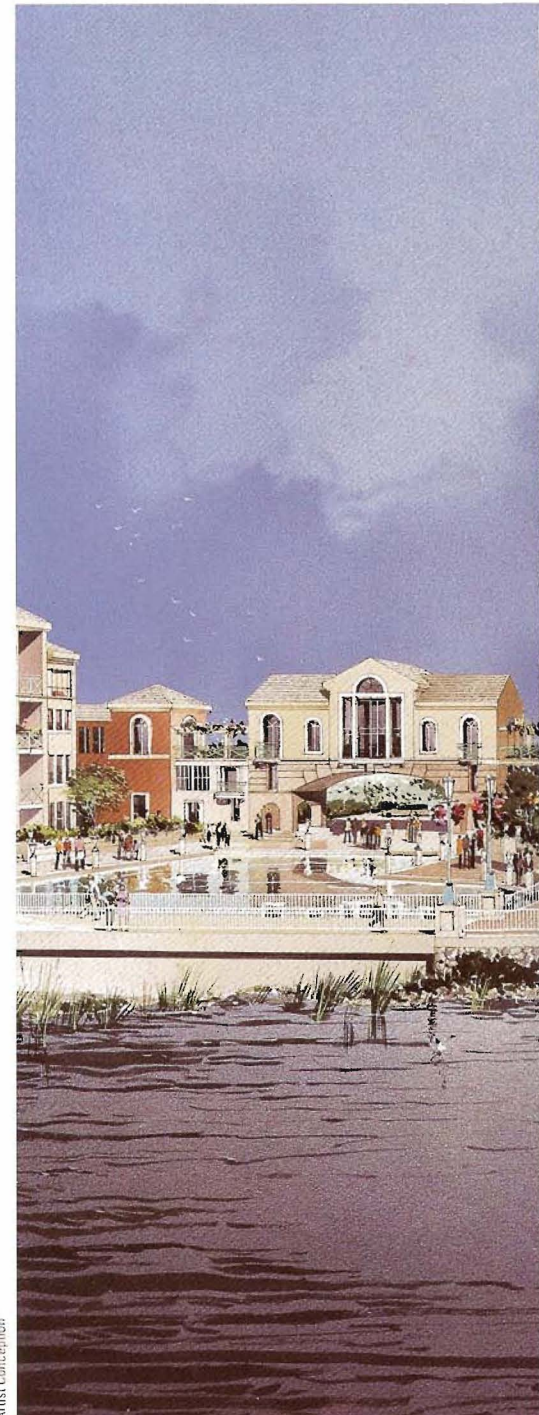


Elegant Waterfront Living

Each Lido condominium home features the special Molnar touches that create spaces designed for unique, comfortable

Be a Part of a New Era at the Quay

Around The Lido, the next phases of the Renaissance will take shape. High-rise, low-rise and townhouse buildings echoing Medici Venice will come together in a harmony of scale. Along the river, a waterfront esplanade will join and extend the present New Westminster esplanade where bistros, shops and restaurants will cater to an active, contemporary way of life.



Artist Conception

Convenient Location

SkyTrain now puts The Lido within minutes of Vancouver. The SkyTrain extension and the Alex Fraser Bridge offer easy access north and south, bringing the Lower Mainland to the doorstep.





The Renaissance at
Westminster Quay represents an
important second phase in New
Westminster's long-term urban
revitalization. The Renaissance
begins here – at The Lido.
Join the CELEBRATION.

